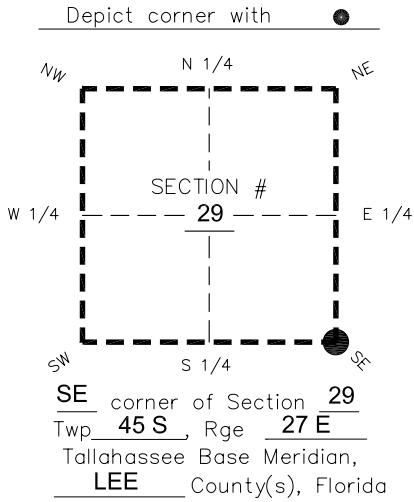


FLORIDA DEPARTMENT OF ENVIRONMENTAL PROTECTION

CERTIFIED CORNER RECORD

DOC. # _____
 BLM. # T45SR27E300200

CORNER DESCRIPTION: MONUMENTATION DESCRIPTION (EVIDENCE FOUND OR METHOD TO SET)



CORNER NOT FOUND.
 SET 4"x4" CONCRETE MONUMENT "LB 1772" FLUSH WITH GROUND.
 USED REFERENCE TIES FROM DOCUMENT NUMBER 051462 TO RESET CORNER.

PRIOR CCR'S:

DOC. # 051462

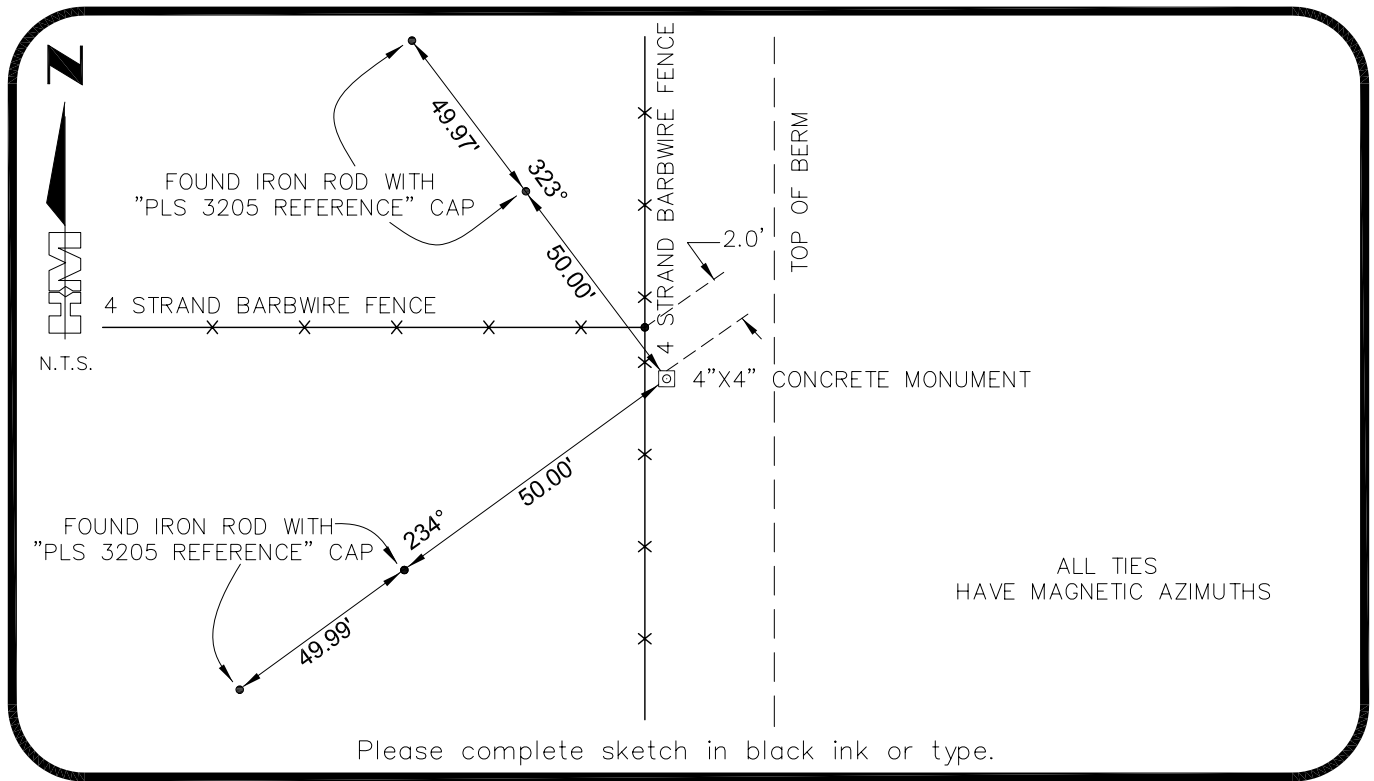
HORIZONTAL POSITION INFORMATION (if determined):

Latitude 26°31'34.6832" Longitude -81°37'42.6578"
 Y(NORTHING-Ft.) 797160.38 X(EASTING-Ft.) 777632.35 Zone West
 Convergence 0°09'57.3" Scale factor 0.99995809

Coordinate determination: **GPS**

Horizontal datum: **NAD83(NSRS2007)**

Accuracy (circle one): 1st 2nd 3rd other 1:35,000



SURVEYORS CERTIFICATE:

I certify the monument and accessories indicated above were field located on 02-26-2007
BEN R. HOMOLA

3950

SIGNATURE PSM NO.
HOLE MONTES 1772

FIRM OR AGENCY LB NO.
6224 WHISKEY CREEK DRIVE
FORT MYERS ADDRESS FL 33919

CITY STATE ZIP
(239)985-1200 04/20/2007

PHONE NUMBER DATE

SEND ORIGINAL TO:
 Department of Environmental Protection
 Bureau of Surveying and Mapping
 3900 Commonwealth Boulevard
 Mail Station 105
 Tallahassee, Florida 32399

D.E.P. USE ONLY
Processed: _____
B.L.M. - I.D. _____
QUAD - I.D. _____

EMBOSSSED SEAL OVER SIGNATURE