

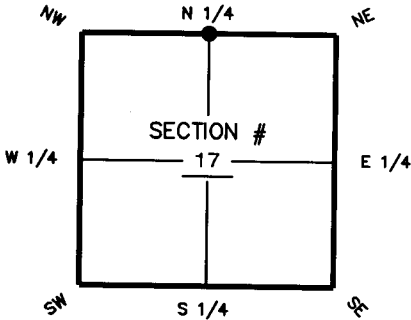
FLORIDA DEPARTMENT OF ENVIRONMENTAL PROTECTION CERTIFIED CORNER RECORD

DOC. # 091873

CORNER DESCRIPTION: MONUMENTATION DESCRIPTION (EVIDENCE FOUND OR METHOD TO SET)

Depict corner with

FOUND 5" X 5" CONCRETE MONUMENT
(NO IDENTIFICATION)

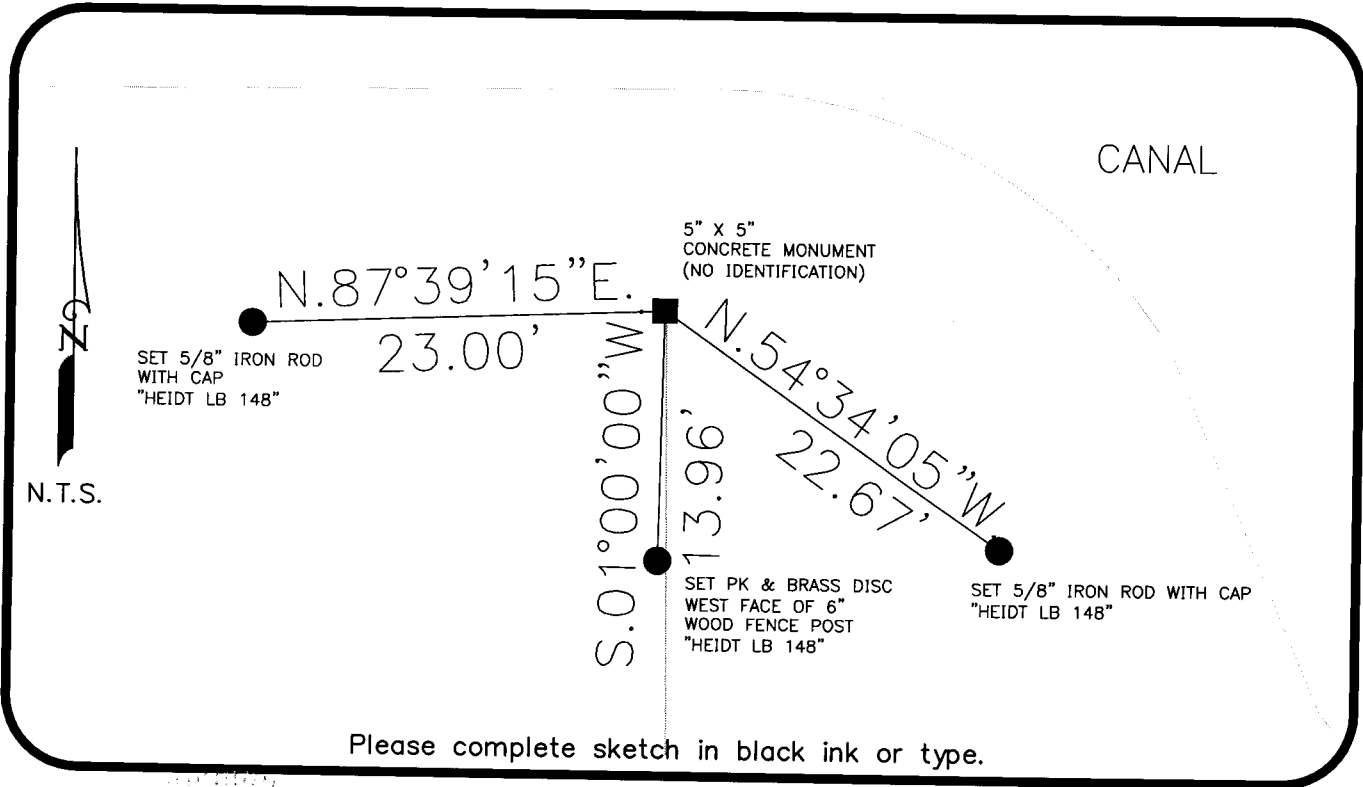


N 1/4 corner of Section 17
Twp. 45 S, Rge 27 E
Tallahassee Base Meridian,
Lee County(s), Florida

HORIZONTAL POSITION INFORMATION (if determined):

Latitude _____ Longitude _____
Y(NORTHING-Ft.) 813098.91 X(EASTING-Ft.) 774621.37 Zone WEST
Convergence _____ Scale factor _____

Coordinate determination (circle one): Field traverse GPS
Horizontal datum (circle one): NAD27 NAD83(1986) NAD83(1990) other NAD83(CORS96)
Accuracy (circle one): 1st 2nd 3rd other _____ (EPOCH2002)



Please complete sketch in black ink or type.

SURVEYORS CERTIFICATE:

I certify the monument and accessories indicated above were field located on 08/27/07

SIGNATURE _____ 6331
HEIDI & ASSOCIATES, INC. PSM NO. 148
3800 COLONIAL BLVD. #200 LB NO. _____
FORT MYERS, FL 33966
(239)482-7275 09/10/07
PHONE NUMBER DATE

SEND ORIGINAL TO:
Department of Environmental Protection
Bureau of Surveying and Mapping
3900 Commonwealth Boulevard
Mail Station 105
Tallahassee, Florida 32399

D.E.P. USE ONLY

Processed: 10-8-07 MB
B.L.M. - I.D. 240500
QUAD - I.D. 2114 Alva SW

EMBOSSSED SEAL OVER SIGNATURE