

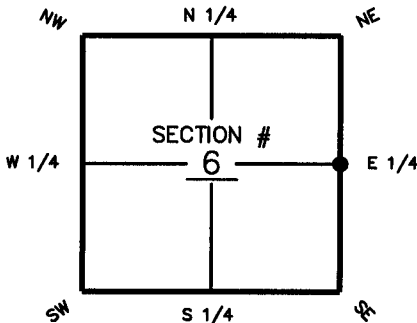
FLORIDA DEPARTMENT OF ENVIRONMENTAL PROTECTION  
CERTIFIED CORNER RECORD

DOC. # 081412

CORNER DESCRIPTION: MONUMENTATION DESCRIPTION (EVIDENCE FOUND OR METHOD TO SET)

Depict corner with ●

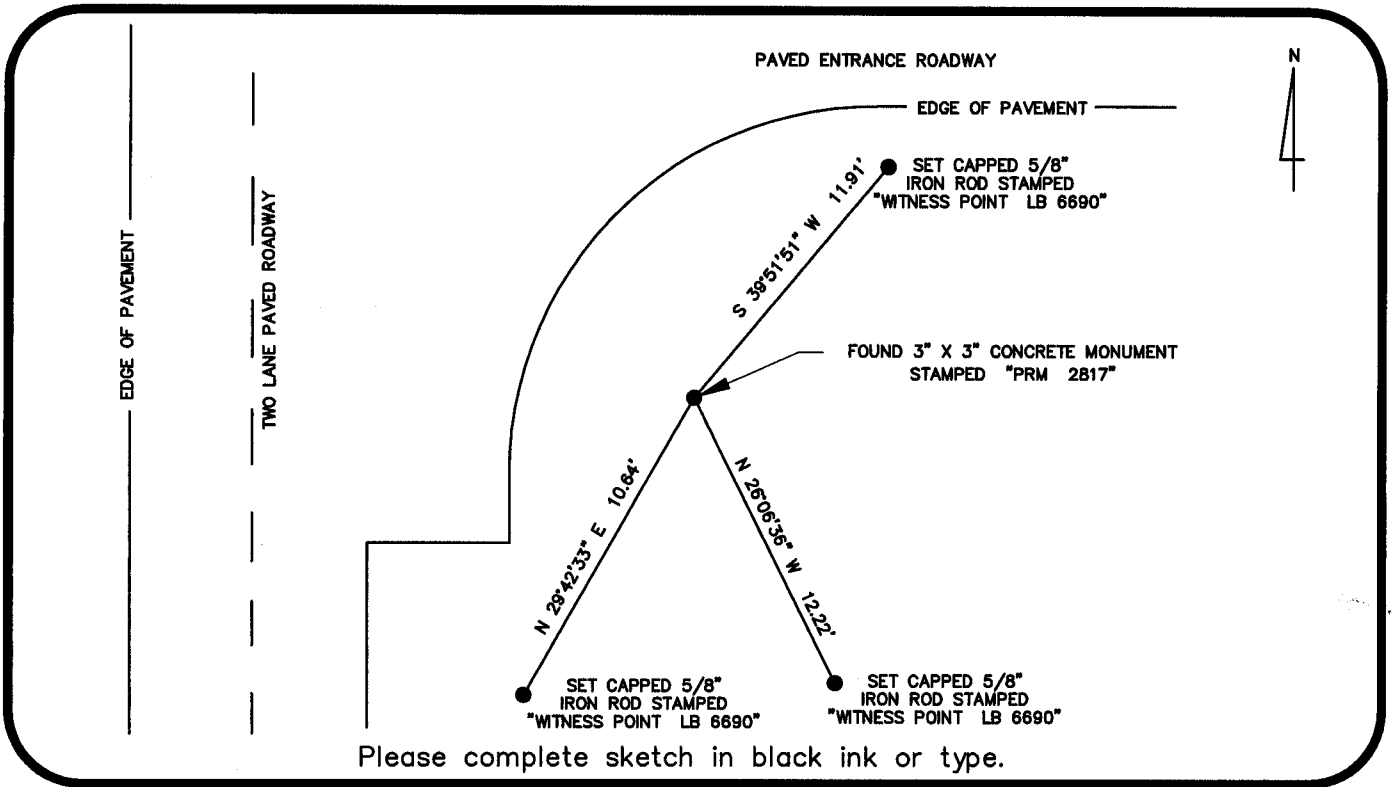
FOUND 4" X 4" CONCRETE MONUMENT  
STAMPED "PRM 2817"



E 1/4 corner of Section 6  
Twp 45 S, Rge 27 E  
Tallahassee Base Meridian,  
LEE County(s), Florida

HORIZONTAL POSITION INFORMATION ( if determined ):

Latitude \_\_\_\_\_ Longitude \_\_\_\_\_  
Y(NORTHING-Ft.) 820994.2540 X(EASTING-Ft.) 771890.7470 Zone FL W  
Convergence \_\_\_\_\_ Scale factor .999956  
Coordinate determination (circle one): Field traverse (GPS)  
Horizontal datum (circle one): NAD27 NAD83(1986) (NAD83(1990)) other (explain)  
Accuracy (circle one): 1st 2nd (3rd) other \_\_\_\_\_



SURVEYORS CERTIFICATE:

I certify the monument and accessories indicated above were field located on MARCH 10, 2004

Richard M. Ritz  
SIGNATURE  
BANKS ENGINEERING, INC.  
FIRM OR AGENCY  
10511 SIX MILE CYPRESS PARKWAY, SUITE 101  
ADDRESS  
FORT MYERS FL 33912  
CITY STATE ZIP  
239-939-5490 MARCH 22, 2004  
PHONE NUMBER DATE

SEND ORIGINAL TO:  
Department of Environmental Protection  
Bureau of Surveying and Mapping  
3900 Commonwealth Boulevard  
Mail Station 105  
Tallahassee, Florida 32399

D.E.P. USE ONLY  
Processed: 3-31-04 CH  
B.L.M. - I.D. 200 640  
QUAD - I.D. 2114 Alva SW

EMBOSSSED SEAL OVER SIGNATURE