

FLORIDA DEPARTMENT OF ENVIRONMENTAL PROTECTION

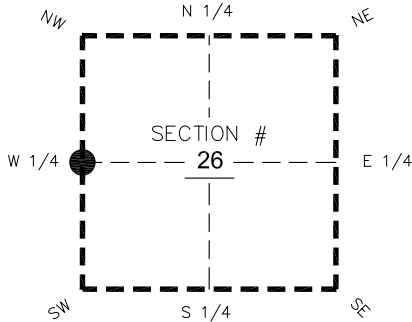
CERTIFIED CORNER RECORD

DOC. # _____
 BLM. # T45SR26E500240

CORNER DESCRIPTION: MONUMENTATION DESCRIPTION (EVIDENCE FOUND OR METHOD TO SET)

Depict corner with

**FOUND 3.5"x3.5" CONCRETE MONUMENT WITH X MARK IN TOP.
 PROJECTS 2.8' ABOVE GROUND.**



PRIOR CCR'S:

DOC. # 0018236

HORIZONTAL POSITION INFORMATION (if determined):

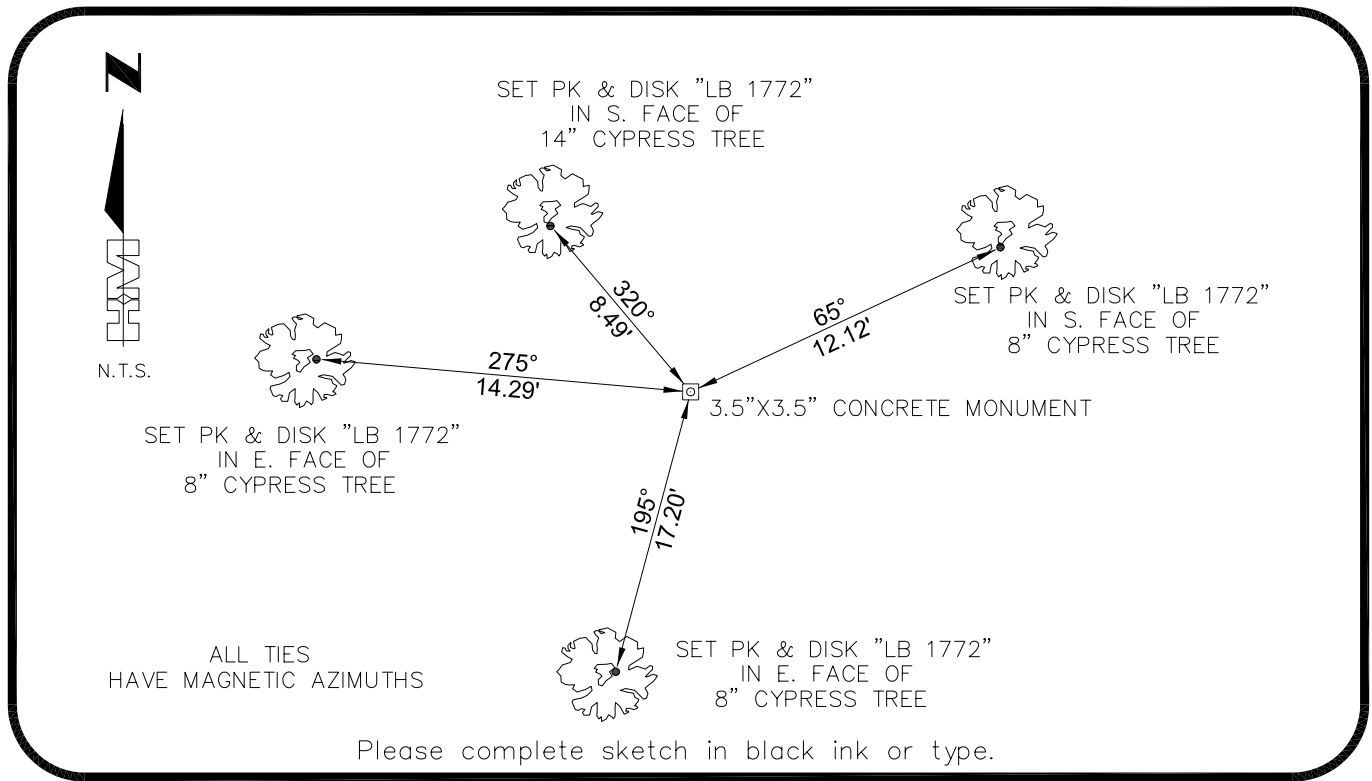
Latitude 26°31'59.7680" Longitude -81°41'35.5249"
 Y(NORTHING-Ft.) 799637.24 X(EASTING-Ft.) 756475.73 Zone West
 Convergence 0°08'13.4" Scale factor 0.99995271

Coordinate determination: **GPS**

Horizontal datum: **NAD83(NSRS2007)**

Accuracy (circle one): 1st 2nd 3rd other 1:35,000

W 1/4 corner of Section 26
 Twp 45 S, Rge 26 E
 Tallahassee Base Meridian,
LEE County(s), Florida



SURVEYORS CERTIFICATE:

I certify the monument and accessories indicated above were field located on 02-28-2007

BEN R. HOMOLA

SEND ORIGINAL TO:
 Department of Environmental Protection
 Bureau of Surveying and Mapping
 3900 Commonwealth Boulevard
 Mail Station 105
 Tallahassee, Florida 32399

3950

 SIGNATURE PSM NO.
HOLE MONTES **1772**

 FIRM OR AGENCY LB NO.
6224 WHISKEY CREEK DRIVE

 ADDRESS FL 33919

 CITY STATE ZIP
(239)985-1200 **04/20/2007**

 PHONE NUMBER DATE

EMBOSSSED SEAL OVER SIGNATURE

D.E.P. USE ONLY
Processed: _____
B.L.M. - I.D. _____
QUAD - I.D. _____