

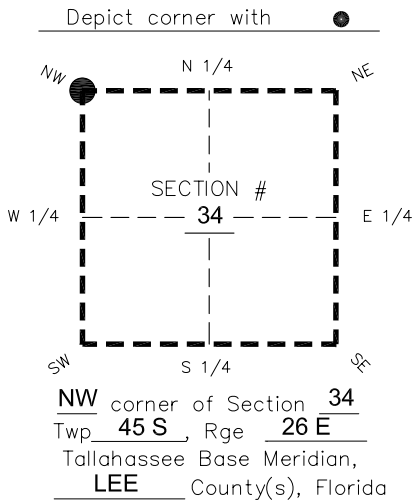
FLORIDA DEPARTMENT OF ENVIRONMENTAL PROTECTION

CERTIFIED CORNER RECORD

DOC. # _____
 BLM. # T45SR26E400200

CORNER DESCRIPTION:

MONUMENTATION DESCRIPTION (EVIDENCE FOUND OR METHOD TO SET)



CORNER NOT FOUND, FALLS IN DITCH. SET 4"x4" CONCRETE MONUMENT WITH 2" DISK "LB 1772" 25' WESTERLY. CORNER LOCATION DETERMINED FROM PREVIOUS SURVEYS BY OTHERS.

PRIOR CCR'S:

DOC. # 0018232

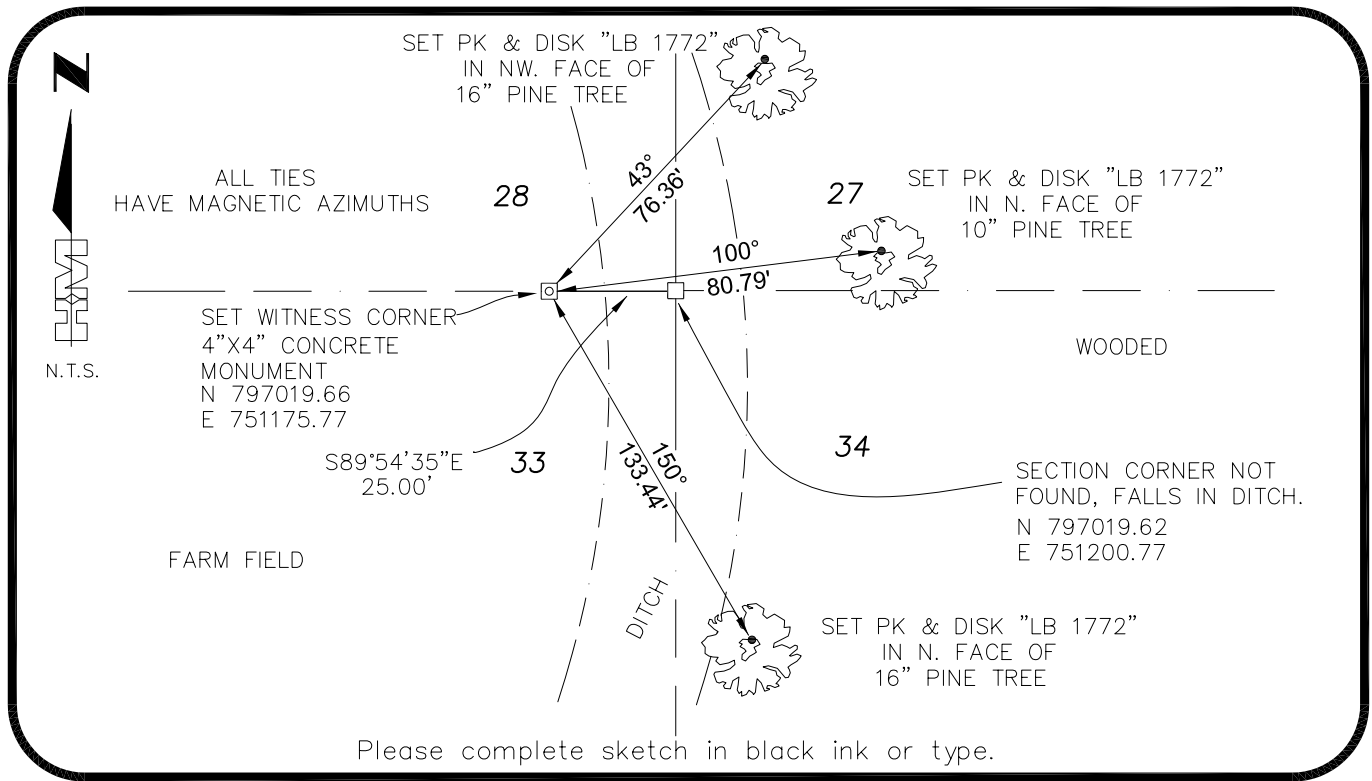
HORIZONTAL POSITION INFORMATION (if determined):

Latitude 26°31'33.9646" Longitude -81°42'33.6707"
 Y(NORTHING-Ft.) 797019.62 X(EASTING-Ft.) 751200.77 Zone West
 Convergence 0°07'47.3" Scale factor 0.99995153

Coordinate determination: GPS

Horizontal datum: NAD83(NSRS2007)

Accuracy (circle one): 1st 2nd 3rd other 1:35,000



SURVEYORS CERTIFICATE:

I certify the monument and accessories indicated above were field located on 03-19-2007
BEN R. HOMOLA

SEND ORIGINAL TO:
 Department of Environmental Protection
 Bureau of Surveying and Mapping
 3900 Commonwealth Boulevard
 Mail Station 105
 Tallahassee, Florida 32399

SIGNATURE HOLE MONTES PSM NO. 3950
 FIRM OR AGENCY 6224 WHISKEY CREEK DRIVE LB NO. 1772
 ADDRESS FORT MYERS STATE FL ZIP 33919
 CITY (239)985-1200 STATE 04/20/2007 ZIP
 PHONE NUMBER DATE

D.E.P. USE ONLY	
Processed: _____	_____
B.L.M. - I.D. _____	_____
QUAD - I.D. _____	_____

EMBOSSSED SEAL OVER SIGNATURE