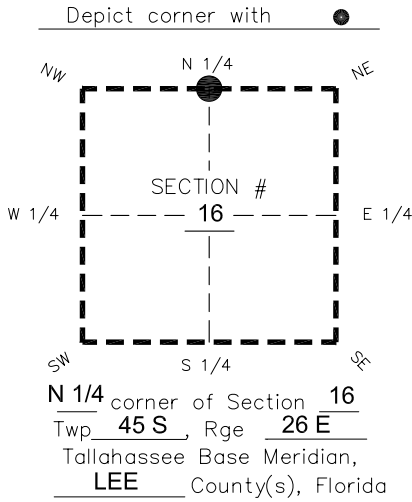


FLORIDA DEPARTMENT OF ENVIRONMENTAL PROTECTION

CERTIFIED CORNER RECORD

DOC. # _____
 BLM. # T45SR26E340500

CORNER DESCRIPTION: MONUMENTATION DESCRIPTION (EVIDENCE FOUND OR METHOD TO SET)



CORNER NOT FOUND. SET 4"x4" CONCRETE MONUMENT WITH 2" DISK "LB 1772" FLUSH WITH GROUND. CORNER LOCATION DETERMINED BY SINGLE PROPORTIONATE MEASUREMENT BETWEEN NW. & NE. CORNERS OF SECTION 16-45-26.

PRIOR CCR'S:

DOC. # N/A

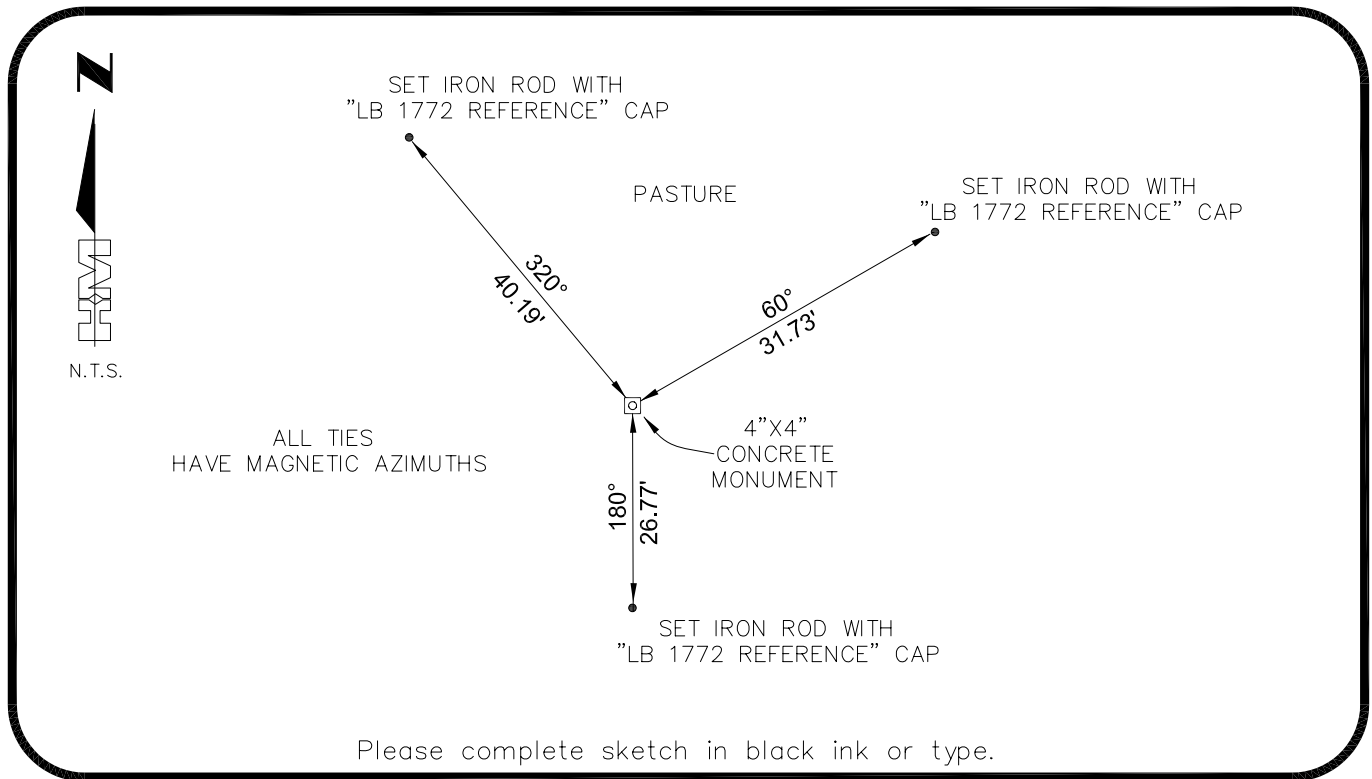
HORIZONTAL POSITION INFORMATION (if determined):

Latitude 26°34'10.8970" Longitude -81°43'05.4331"
 Y(NORTHING-Ft.) 812858.38 X(EASTING-Ft.) 748281.06 Zone West
 Convergence 0°07'33.8" Scale factor 0.99995091

Coordinate determination: GPS

Horizontal datum: NAD83(NSRS2007)

Accuracy (circle one): 1st 2nd 3rd other 1:35,000



SURVEYORS CERTIFICATE:

I certify the monument and accessories indicated above were field located on 03-22-2007

BEN R. HOMOLA

	3950
SIGNATURE HOLE MONTES	PSM NO. 1772
FIRM OR AGENCY 6224 WHISKEY CREEK DRIVE	LB NO.
ADDRESS FORT MYERS	FL 33919
CITY (239)985-1200	STATE 04/20/2007
PHONE NUMBER	DATE

EMBOSSSED SEAL OVER SIGNATURE

SEND ORIGINAL TO:
 Department of Environmental Protection
 Bureau of Surveying and Mapping
 3900 Commonwealth Boulevard
 Mail Station 105
 Tallahassee, Florida 32399

D.E.P. USE ONLY
Processed: _____
B.L.M. - I.D. _____
QUAD - I.D. _____