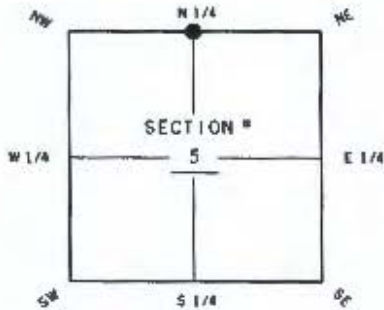


# FLORIDA DEPARTMENT OF ENVIRONMENTAL PROTECTION CERTIFIED CORNER RECORD

DOC. # 102122

**CORNER DESCRIPTION:**

Depict corner with



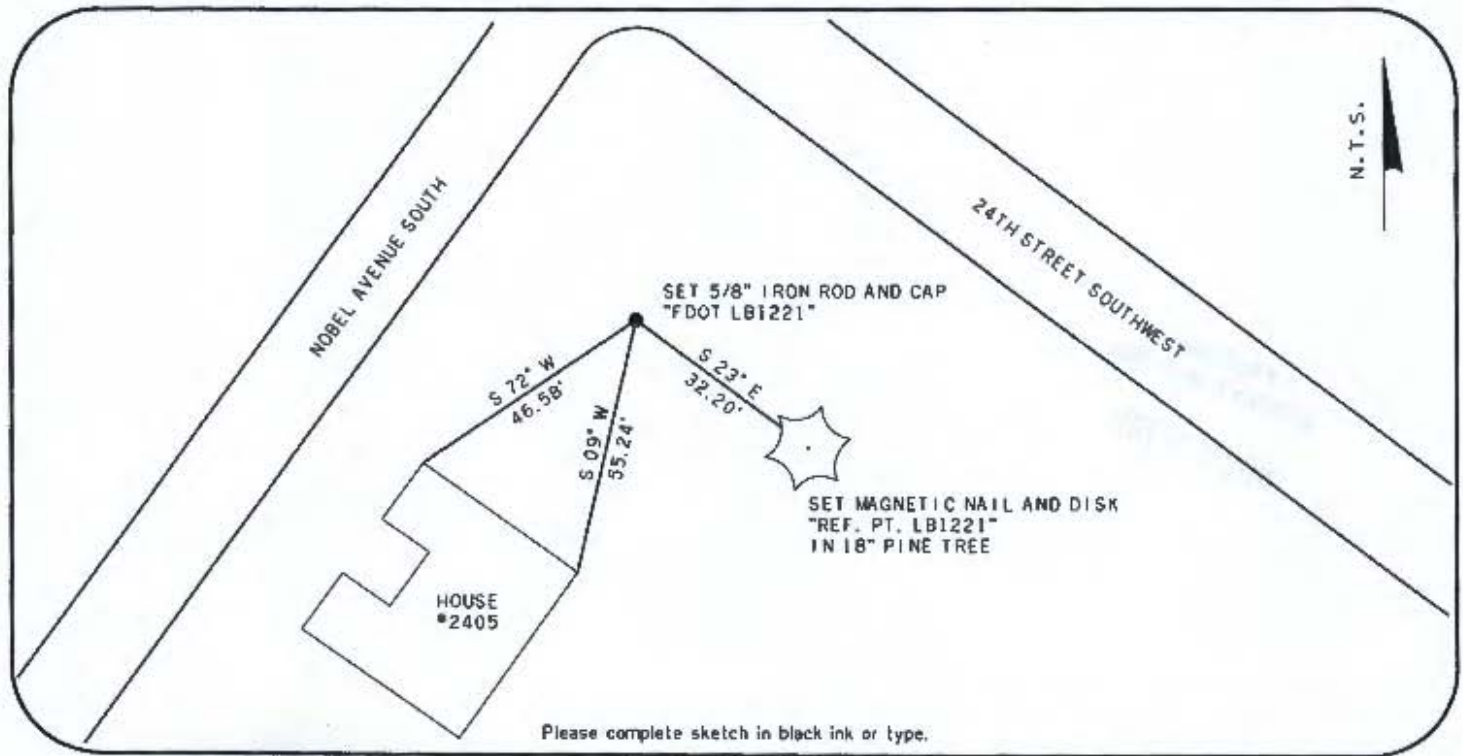
N 1/4 corner of Section 5  
TWP 45 S RGE 26 E  
Tallahassee Base Meridian,  
LEE County(s), Florida

**MONUMENTATION DESCRIPTION (EVIDENCE FOUND OR METHOD TO SET)**

SET 5/8" IRON ROD AND CAP "FDOT LB1221"

**HORIZONTAL POSITION INFORMATION ( if determined ):**

Latitude 26° 35' 55.74692" N Longitude 81° 44' 04.52001" W  
Y (NORTHING-Ft.) 823433.488 X (EASTING-Ft.) 742894.482 Zone FL-WEST  
Convergence 0° 07' 07.8" Scale factor 0.999949800  
Coordinate determination (circle one): Field traverse  GPS  
Horizontal datum (circle one): NAD27 NAD83(1986)  NAD83(1999) other (explain)  
Accuracy (circle one): 1st 2nd  3rd other \_\_\_\_\_



**SURVEYORS CERTIFICATE:**

I certify the monument and accessories indicated above were field located on

OCTOBER 5, 2011

*William P. Franklin*  
SIGNATURE  
BOWER-SINGLETON & ASSO. INC.  
FIRM OR AGENCY  
1514 26 SOUTH MAGNOLIA AVE.  
ORLANDO, FLORIDA 32801  
407-843-5120  
PHONE NUMBER

4633  
FIRM NO.  
1221  
LB NO.  
FLORIDA 32801  
STATE ZIP  
DATE NOVEMBER 11, 2011

SEND ORIGINAL TO:  
Department of Environmental Protection  
Bureau of Surveying and Mapping  
3900 Commonwealth Boulevard  
Mail Station 105  
Tallahassee, Florida 32399

D.E.P. USE ONLY

Processed: 11-18-11 WLE

B.L.M. - I.D. 240700

QUAD - I.D. 2114 ALVA SW

EMBOSSSED SEAL OVER SIGNATURE