

**FLORIDA DEPARTMENT OF ENVIRONMENTAL PROTECTION
CERTIFIED CORNER RECORD**

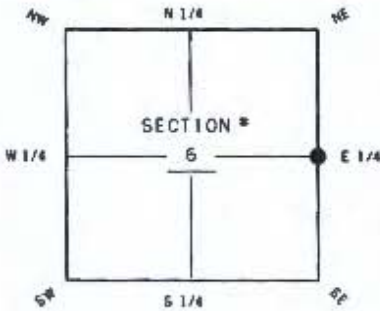
DOC. # 102127

CORNER DESCRIPTION:

Depict corner with ●

MONUMENTATION DESCRIPTION (EVIDENCE FOUND OR METHOD TO SET)

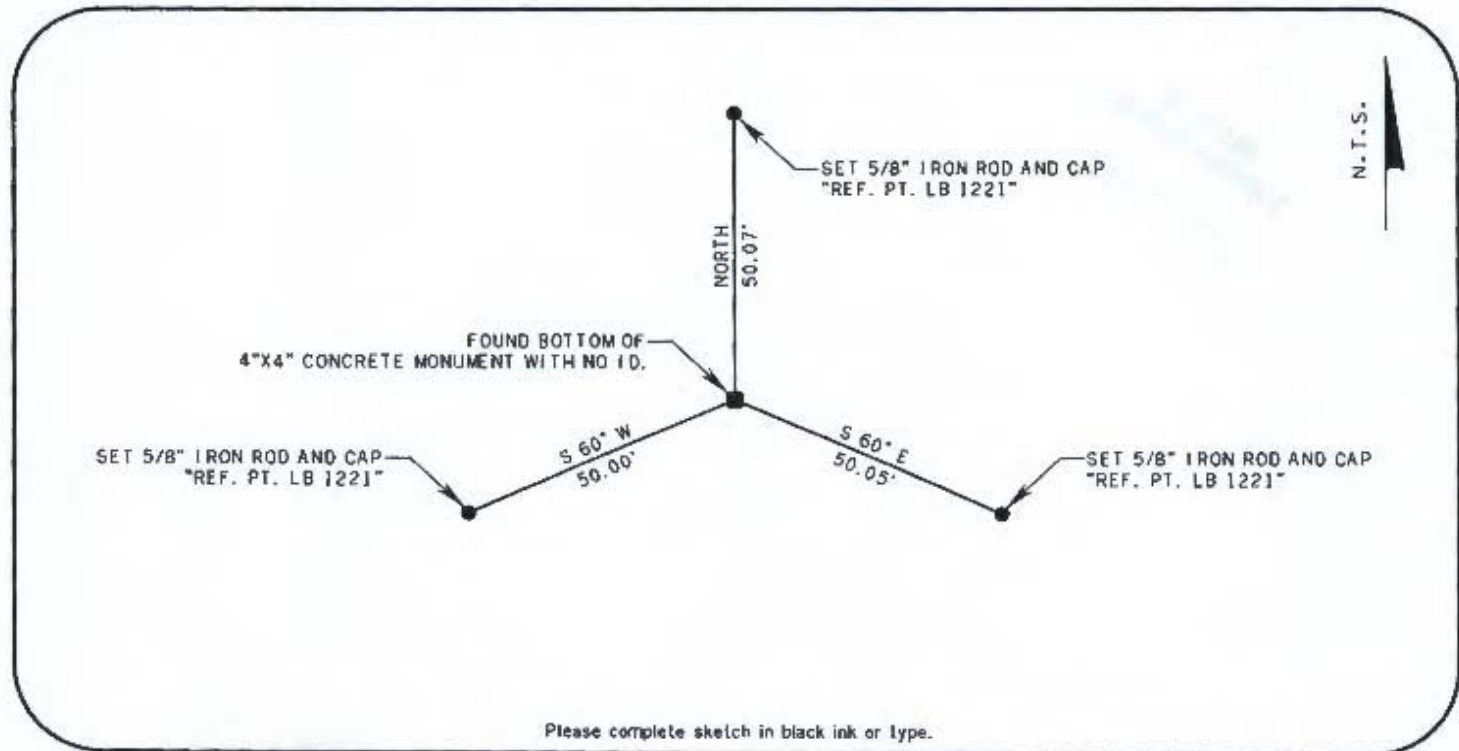
FOUND BOTTOM OF 4"X4" CONCRETE MONUMENT WITH NO I.D.



E 1/4 corner of Section 6
TWP 45 S RGE 26 E
Tallahassee Base Meridian,
LEE County(s), Florida

HORIZONTAL POSITION INFORMATION (if determined):

Latitude 26° 35' 29.33945" N Longitude 81° 44' 33.41608" W
Y(NORTHING-Ft.) 820761.798 X(EASTING-Ft.) 740276.970 Zone FL-WEST
Convergence 0° 06' 54.8" Scale factor 0.999949288
Coordinate determination (circle one): Field traverse (GPS)
Horizontal datum (circle one): NAD27 NAD83(1986) (NAD83(1999)) other (explain)
Accuracy (circle one): 1st 2nd (3rd) other _____



Please complete sketch in black ink or type.

SURVEYORS CERTIFICATE:

I certify the monument and accessories indicated above were field located on

MARCH 15, 2011

William P. Hinckley 4633
SIGNATURE PERMNO.
BOWYER-SINGLETON & ASSOC. INC. 1221
FIRM OR AGENCY LB NO.
320 SOUTH MAGNOLIA AVE.
ORLANDO FLORIDA 32801
ORLANDO FLORIDA 32801
407-843-9188 NOVEMBER 11, 2011
PHONE NUMBER DATE

SEND ORIGINAL TO:
Department of Environmental Protection
Bureau of Surveying and Mapping
3900 Commonwealth Boulevard
Mail Station 105
Tallahassee, Florida 32399

Processed	D. E. P. USE ONLY
	<u>11-18-11</u> <u>WLE</u>
B. L. M. - I. D.	<u>200640</u>
QUAD - I. D.	<u>2114 ALVA SW</u>

EMBOSSSED SEAL OVER SIGNATURE