

FLORIDA DEPARTMENT OF ENVIRONMENTAL PROTECTION CERTIFIED CORNER RECORD

N-13

DOC. #

081718

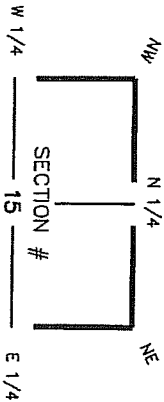
BLM# T45SR25E400400

CORNER DESCRIPTION:

MONUMENTATION DESCRIPTION (EVIDENCE FOUND OR METHOD TO SET)

Depict corner with

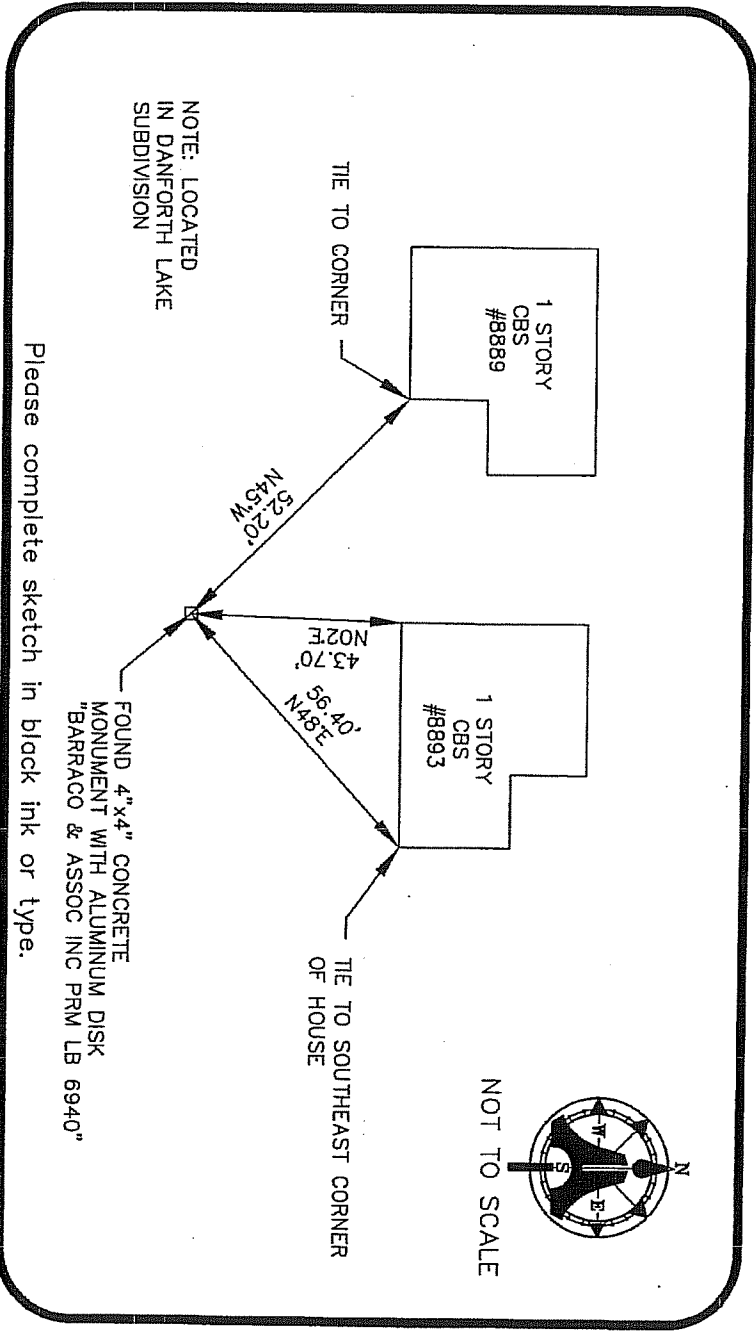
FOUND 4"x4" CONCRETE MONUMENT WITH ALUMINUM DISK
BARRACO & ASSOC INC PRM LB 6940"



HORIZONTAL POSITION INFORMATION (if determined):

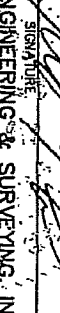
Latitude 26° 35' 16.2630" N Longitude 81° 48' 22.9766" W
 Y(NORTHING-Ft.) 807288.5835 X(EASTING-Ft.) 719458.9588 Zone FLW
 Convergence 00° 05' 11.6" Scale factor 0.99994577
 Coordinate determination (circle one): GRS other (explain)
 Horizontal datum (circle one): NAD27 NAD83(1986) NAD83(1990) other (explain)
 Accuracy (circle one): 1st 2nd 3rd other _____

SW corner of Section 15
Twp 45 S Rge 25 E
Tallahassee Base Meridian,
LEE County(s), Florida



SURVEYORS CERTIFICATE:

I certify the monument and accessories indicated above were field located on 10/08/03

SIGNATURE: 
 FIRM OR AGENCY: AIM ENGINEERING & SURVEYING, INC. PSM NO. 5688
 LB NO. LB 3114

SEND ORIGINAL TO:
 Department of Environmental Protection
 Bureau of Surveying and Mapping
 3900 Commonwealth Boulevard
 Tallahassee, Florida 32399

5300 LEE BOULEVARD
 LEHIGH ACRES, FLORIDA 33971-1026
 CITY STATE ZIP
 (239) 332-4569 DATE 04/24/04
 PHONE NUMBER
 EMBOSSED SEAL OVER SIGNATURE

Processed: D.E.P. USE ONLY
 B.L.M. - I.D. 400400
 QUAD - I.D. 215 Tallahassee SE