

FLORIDA DEPARTMENT OF ENVIRONMENTAL PROTECTION
CERTIFIED CORNER RECORD

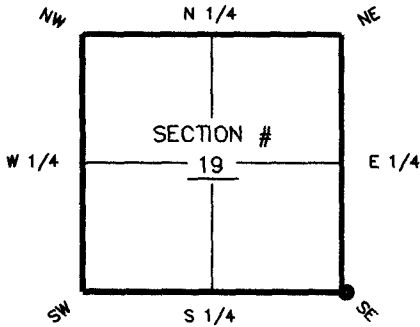
DOC. # 087920

R-5

CORNER DESCRIPTION: MONUMENTATION DESCRIPTION (EVIDENCE FOUND OR METHOD TO SET)

Depict corner with ●

FOUND CONCRETE MONUMENT 6"X6" (NO I.D.)

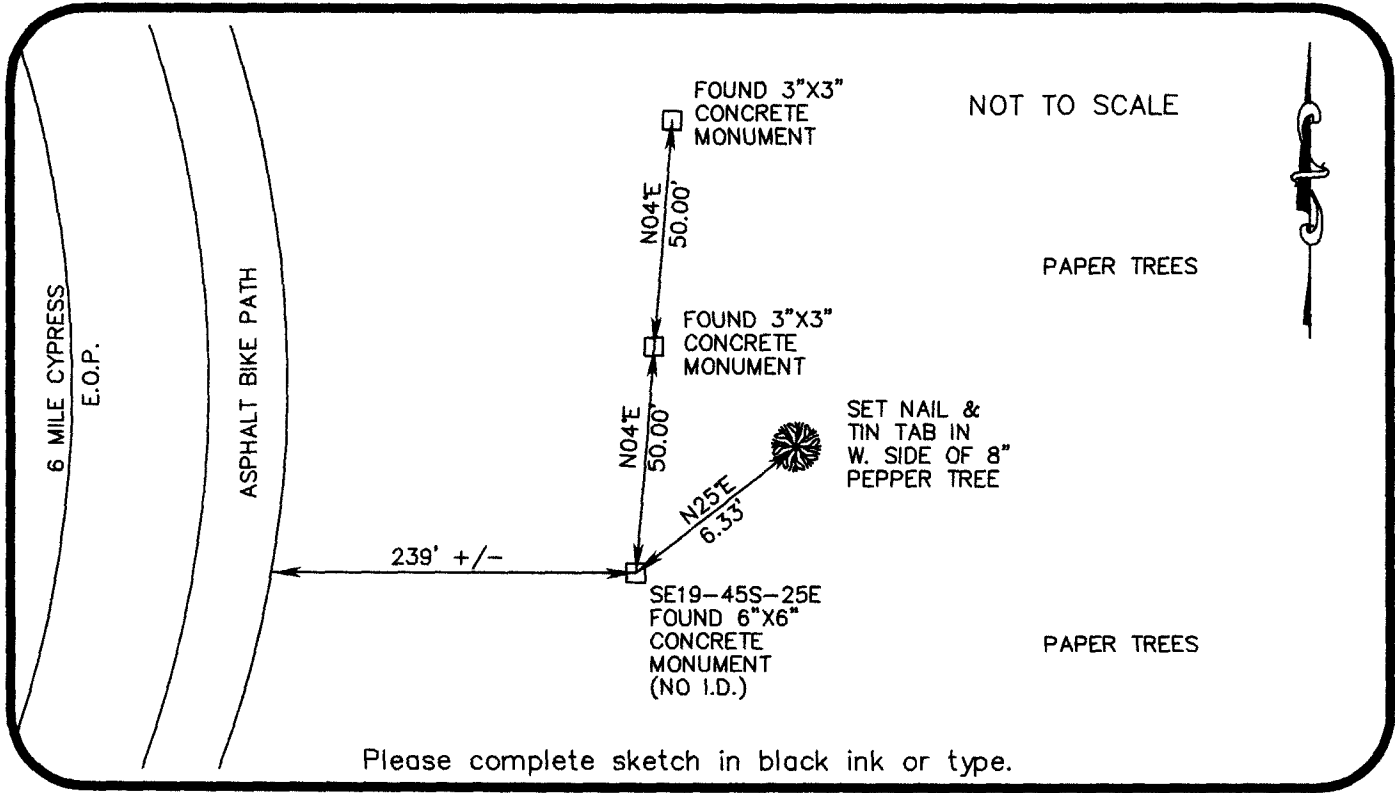


SE corner of Section 19
Twp 45 S, Rge 25 E
Tallahassee Base Meridian,
LEE County(s), Florida

HORIZONTAL POSITION INFORMATION (if determined):

Latitude 26° 32' 21.8300" N Longitude 81° 50' 20.0166" W
Y(NORTHING-Ft.) 801777.90 X(EASTING-Ft.) 708838.18 Zone FL W
Convergence ±00° 04' 19.1" Scale factor 0.999944357

Coordinate determination (circle one): Field traverse (GPS)
Horizontal datum (circle one): NAD27 NAD83(1986) (NAD83(1990)) other (explain)
Accuracy (circle one): 1st (2nd) 3rd other _____



SURVEYORS CERTIFICATE:

I certify the monument and accessories indicated above were field located on SEPTEMBER 12, 2005

<i>Ken Pulch</i>	6126
SIGNATURE	PSM NO.
2802 W CYPRESS AVE SE	
FIRM OR AGENCY	LB NO.
FT. MYERS, FLORIDA	33905
CITY STATE ZIP	
(239) 462-1901	3/12/06
PHONE NUMBER	DATE

EMBOSSSED SEAL OVER SIGNATURE

SEND ORIGINAL TO:
Department of Environmental Protection
Bureau of Surveying and Mapping
3900 Commonwealth Boulevard
Mail Station 105
Tallahassee, Florida 32399

D.E.P. USE ONLY
Processed: _____
B.L.M. - I.D. _____
QUAD - I.D. _____