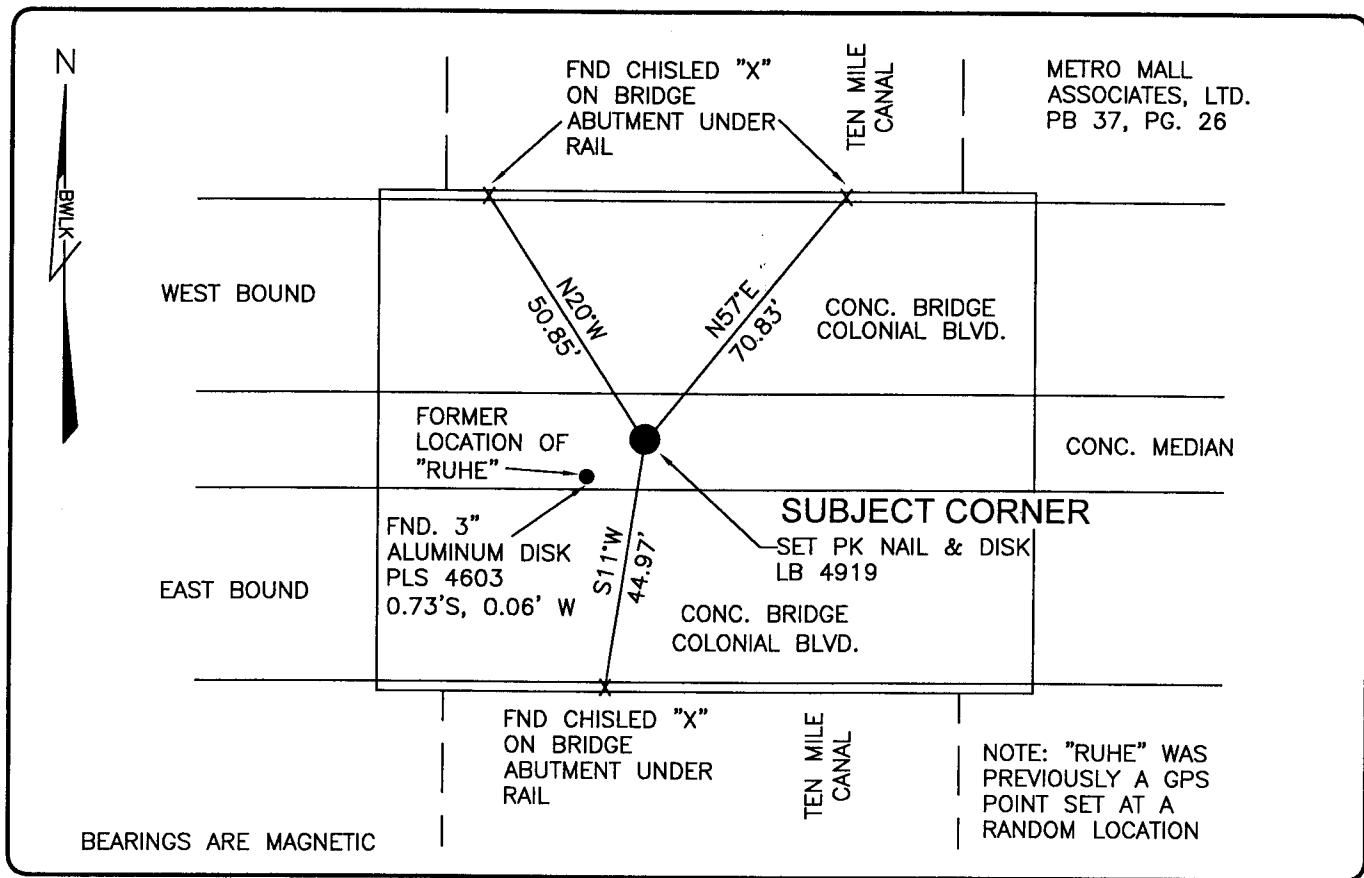


PUBLIC WORKS
LEE COUNTY, FLORIDA

Address - 1500 Monroe St., Ft. Myers, Fla. 33901

Phone : (239) 479-8900

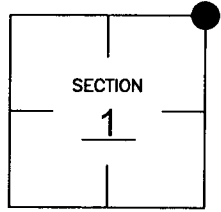


COMMENTS:

FOUND DISK (PLS-4603) ON BRIDGE - NOT SAME POINT AS REFERENCED IN CCR # 37941. RESET BASED ON COORDINATE VALUES PER SURVEY OF PAGE FIELD BY DENI ASSOCIATES DATED 1991. VERIFIED LOCATION WITH SUBDIVISION TO NE (PB 37, PG 26)

CORNER DESCRIPTION

NE Corner
Section 1
Township 45
Range 24



HORIZONTAL POSITION INFORMATION

Florida West Zone, NAD 1983(1990 Adjustment)
Northing(ft) 822811.59 Easting(ft) 703356.44
Latitude 26d35'50.21465" Longitude 81d51'20.11661"
Scale Factor 0.99994

EXISTING CERTIFIED CORNER RECORDS

| Document No. | Date |
|--------------|---------|
| 37941 | 1-24-91 |
| 38395 | 2-11-91 |
| | |
| | |
| | |

The above documents are based on FDEP Bureau of Surveying and Mapping Record Information.

I hereby certify the monument and accessories shown above were field located on 9-26-03

Scott C. Whitaker

SCOTT C. WHITAKER
Professional Surveyor and Mapper
Florida Certificate No. 4324
Date Signed 1-29-04

BEAN, WHITAKER, LUTZ & KAREH, INC. (LB 4919)
13041 McGregor Boulevard
Fort Myers, Florida 33919-5910
Phone: (239) 481-1331

POINT NO. 5002

BLM REFERENCE NO. T45SR24E700700