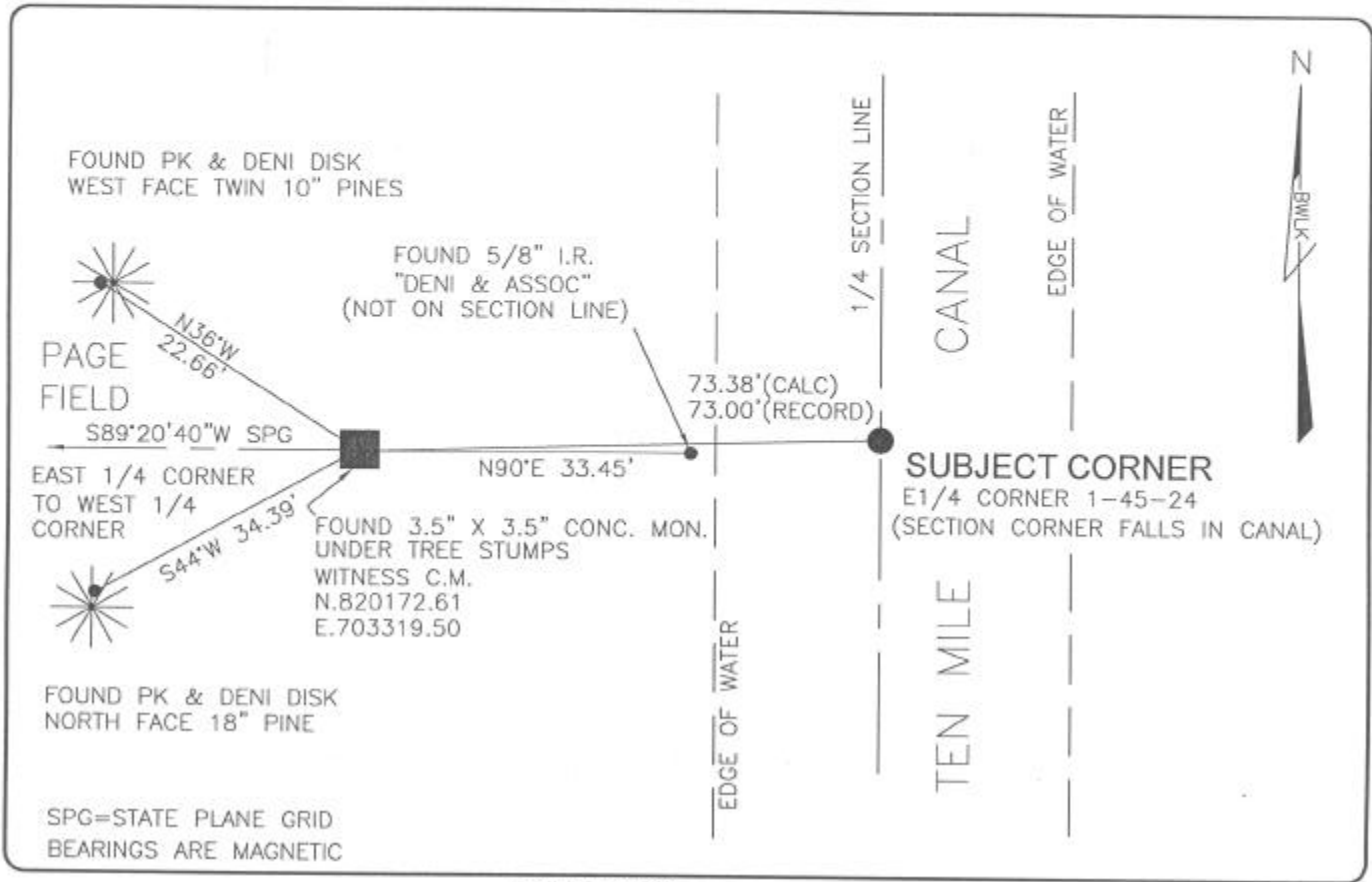


LAND CORNER RECORD

PUBLIC WORKS
LEE COUNTY, FLORIDA

Address - 1500 Monroe St., Ft. Myers, Fla. 33901

Phone : (239) 479-8900



COMMENTS:

ESTABLISHED VALUES FOR 1/4 SECTION CORNER FROM DENI ASSOCIATES SURVEY OF PAGE FIELD DATED 1991 WHICH INDICATED CO-ORDINATE VALUES. HISTORICAL BEARINGS TO NE CORNER AND SE CORNER OF SECTION CONFIRM VALUES. FOUND WITNESS CORNER AND REFERENCES AS SHOWN ON CCR 37942.

CORNER DESCRIPTION

E1/4 Corner
Section 1
Township 45
Range 24



HORIZONTAL POSITION INFORMATION

Florida West Zone, NAD 1983(1990 Adjustment)
Northing(ft) 820173.43 Easting(ft) 703392.88
Latitude 26°35'24.08571" Longitude 81°51'19.74797"
Scale Factor 0.99994

EXISTING CERTIFIED CORNER RECORDS

Document No.	Date
<u>37942</u>	<u>1-24-91</u>
<u>59293</u>	<u>3-05-97</u>

The above documents are based on FDEP Bureau of Surveying and Mapping Record Information.

I hereby certify the monument and accessories shown above were field located on 3-23-04

Scott C. Whitaker
SCOTT C. WHITAKER
Professional Surveyor and Mapper
Florida Certificate No. 4324
Date Signed 5-07-04

BEAN, WHITAKER, LUTZ & KAREH, INC. (LB 4919)
13041 McGregor Boulevard
Fort Myers, Florida 33919-5910
Phone: (239) 481-1331

POINT NO. 5427

BLM REFERENCE NO. T45SR24E700640