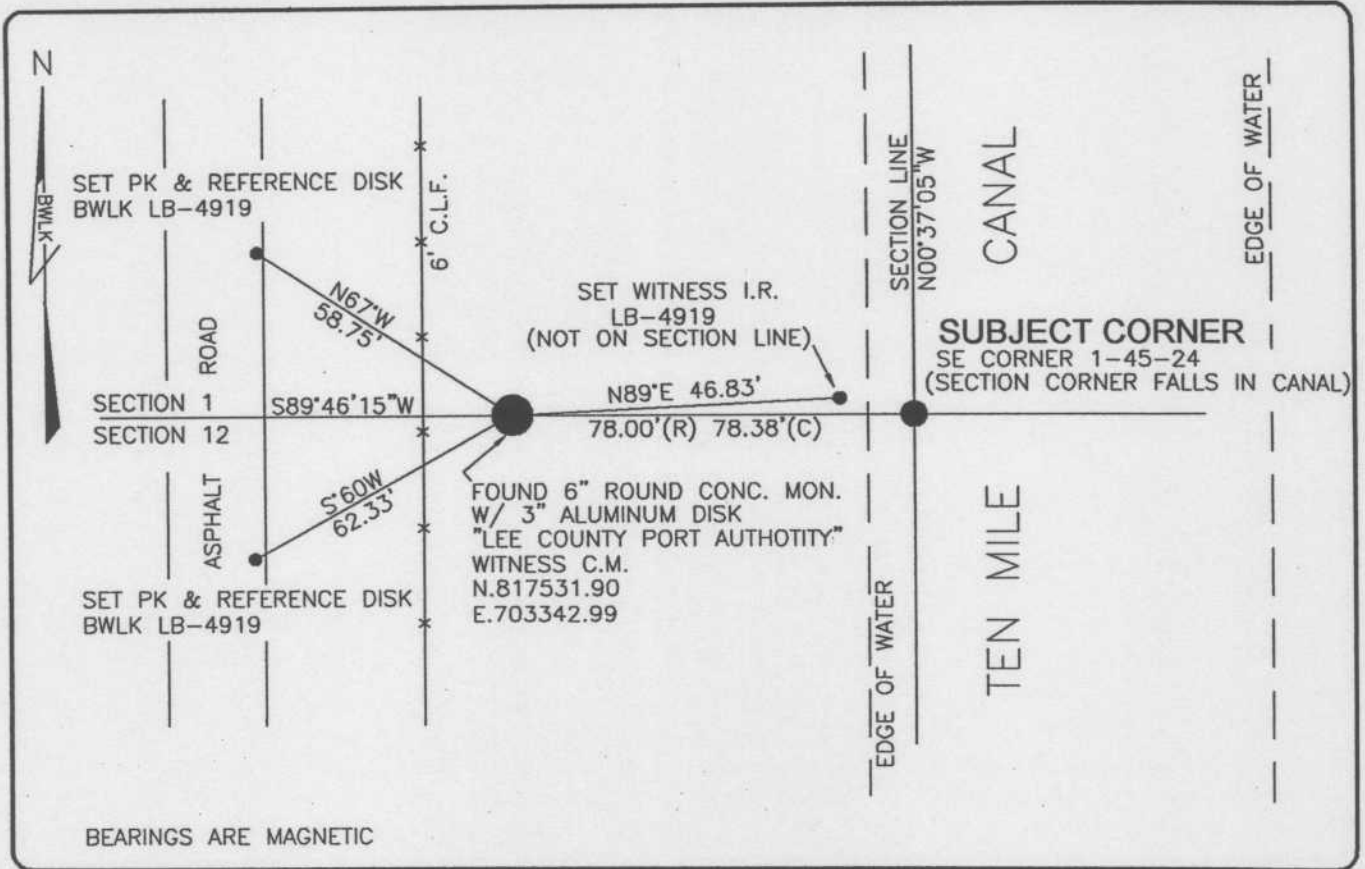


LAND CORNER RECORD

**PUBLIC WORKS
LEE COUNTY, FLORIDA**

Address - 1500 Monroe St., Ft. Myers, Fla. 33901

Phone : (239) 479-8900

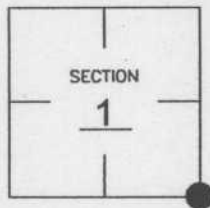


COMMENTS:

ESTABLISHED VALUES FOR SECTION CORNER FROM DENI ASSOCIATES SURVEY OF PAGE FIELD DATED 1991. HISTORICAL BEARINGS TO E1/4 CORNER AND S1/4 CORNER CONFIRM VALUES.

CORNER DESCRIPTION

SE Corner
 Section 1
 Township 45
 Range 24



HORIZONTAL POSITION INFORMATION

Florida West Zone, NAD 1983(1990 Adjustment)

Northing(ft) 817532.29 Easting(ft) 703421.37

Latitude 26°34'57.92732" Longitude 81°51'19.46698"

Scale Factor 0.99994

EXISTING CERTIFIED CORNER RECORDS

Document No.	Date
<u>37943</u>	<u>1-24-91</u>
<u>59296</u>	<u>3-14-97</u>

The above documents are based on FDEP Bureau of Surveying and Mapping Record Information.

I hereby certify the monument and accessories shown above were field located on 1-13-03

Scott C. Whitaker
 SCOTT C. WHITAKER
 Professional Surveyor and Mapper
 Florida; Certificate No. 4324
 Date Signed 4-07-04

BEAN, WHITAKER, LUTZ & KAREH, INC. (LB 4919)
 13041 McGregor Boulevard
 Fort Myers, Florida 33919-5910
 Phone: (239) 481-1331

POINT NO. 5426

BLM REFERENCE NO. T45SR24E700600