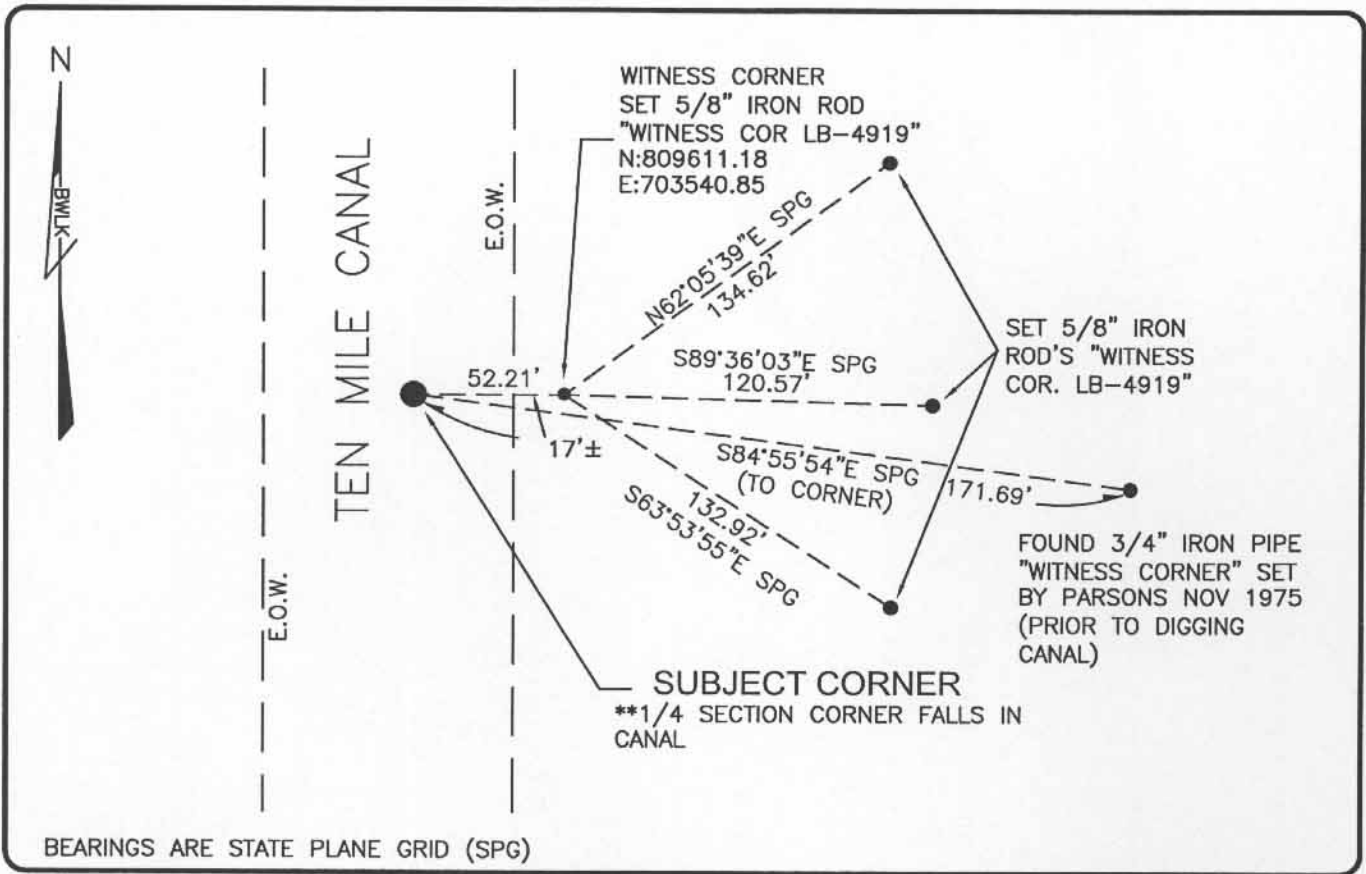


LAND CORNER RECORD

PUBLIC WORKS
LEE COUNTY, FLORIDA

Address - 1500 Monroe St., Ft. Myers, Fla. 33901

Phone : (239) 479-8900



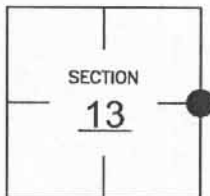
BEARINGS ARE STATE PLANE GRID (SPG)

COMMENTS:

CORNER DESTROYED DURING CANAL CONSTRUCTION.
RE-ESTABLISHED LOCATION OF CORNER BASED ON
HISTORICAL RECORDS.

CORNER DESCRIPTION

E1/4 Corner
Section 13
Township 45
Range 24



HORIZONTAL POSITION INFORMATION

Florida West Zone, NAD 1983(1990 Adjustment)
Northing(ft) 809609.85 Easting(ft) 703488.66
Latitude 26°33'39.46185" Longitude 81°51'18.82437"
Scale Factor 0.99994

EXISTING CERTIFIED CORNER RECORDS

Document No.	Date
NONE	NONE

The above documents are based on FDEP Bureau of Surveying and Mapping Record Information.

I hereby certify the monument and accessories shown above were field located on 4-16-04.

Scott C. Whitaker
SCOTT C. WHITAKER
Professional Surveyor and Mapper
Florida Certificate No. 4324
Date Signed 5-07-04

BEAN, WHITAKER, LUTZ & KAREH, INC. (LB 4919)
13041 McGregor Boulevard
Fort Myers, Florida 33919-5910
Phone: (239) 481-1331

POINT NO. 6128

BLM REFERENCE NO. T45SR24E700440