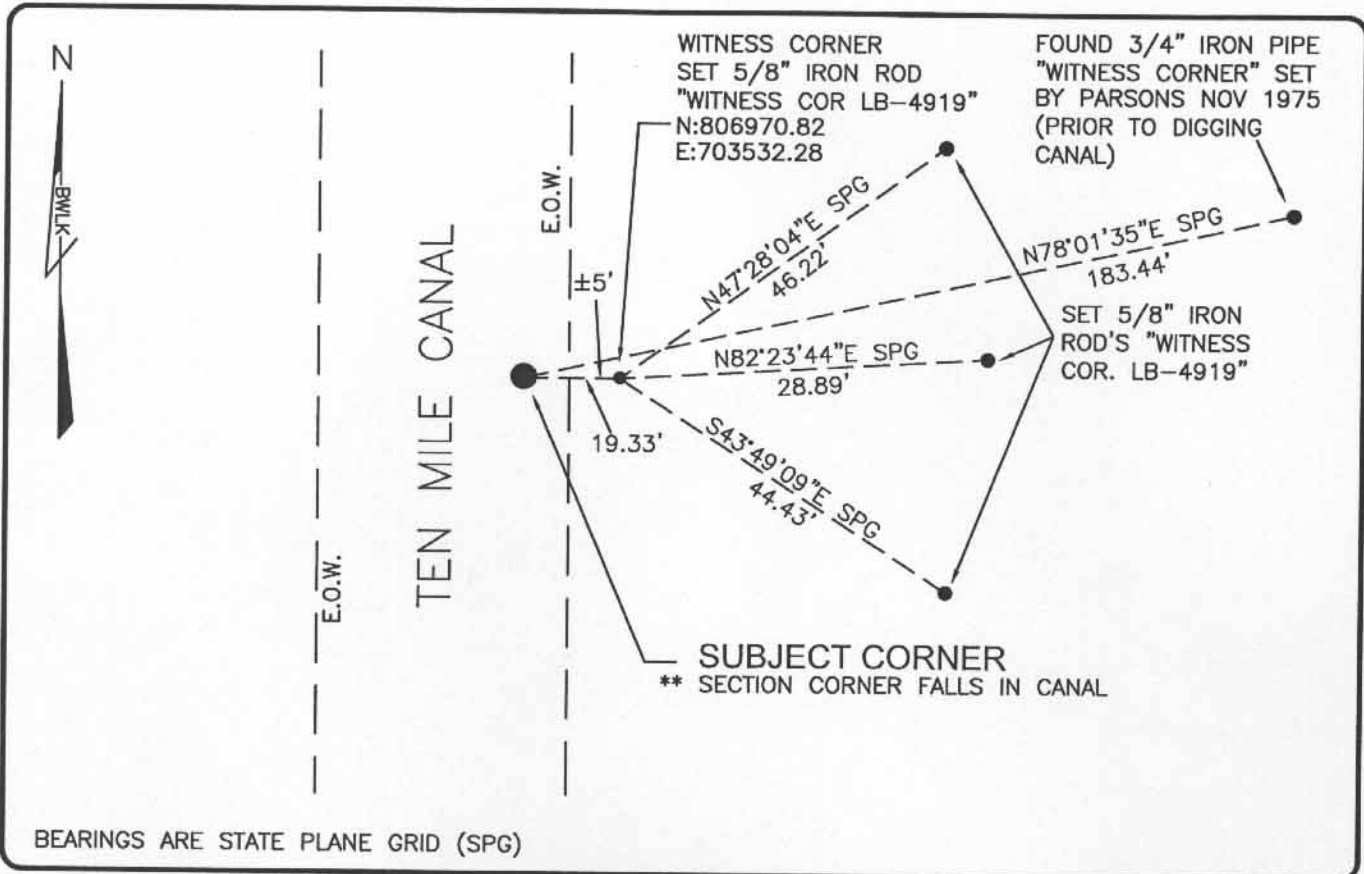


LAND CORNER RECORD

PUBLIC WORKS  
LEE COUNTY, FLORIDA

Address - 1500 Monroe St., Ft. Myers, Fla. 33901

Phone : (239) 479-8900



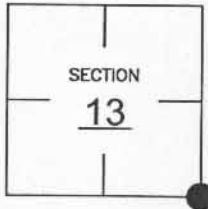
BEARINGS ARE STATE PLANE GRID (SPG)

COMMENTS:

CORNER DESTROYED DURING CANAL CONSTRUCTION.  
RE-ESTABLISHED LOCATION OF CORNER BASED ON  
HISTORICAL RECORDS.

CORNER DESCRIPTION

SE Corner  
Section 13  
Township 45  
Range 24



HORIZONTAL POSITION INFORMATION

Florida West Zone, NAD 1983(1990 Adjustment)

Northing(ft) 806970.69 Easting(ft) 703512.95

Latitude 26°33'13.32304" Longitude 81°51'18.58971"

Scale Factor 0.99994

EXISTING CERTIFIED CORNER RECORDS

Document No.	Date
NONE	NONE

The above documents are based on FDEP Bureau of Surveying and Mapping Record Information.

I hereby certify the monument and accessories shown above were field located on 4-16-04.

*Scott C. Whitaker*  
SCOTT C. WHITAKER  
Professional Surveyor and Mapper  
Florida Certificate No. 4324  
Date Signed 5-07-04

BEAN, WHITAKER, LUTZ & KAREH, INC. (LB 4919)  
13041 McGregor Boulevard  
Fort Myers, Florida 33919-5910  
Phone: (239) 481-1331

POINT NO. 6133

BLM REFERENCE NO. T45SR24E700400