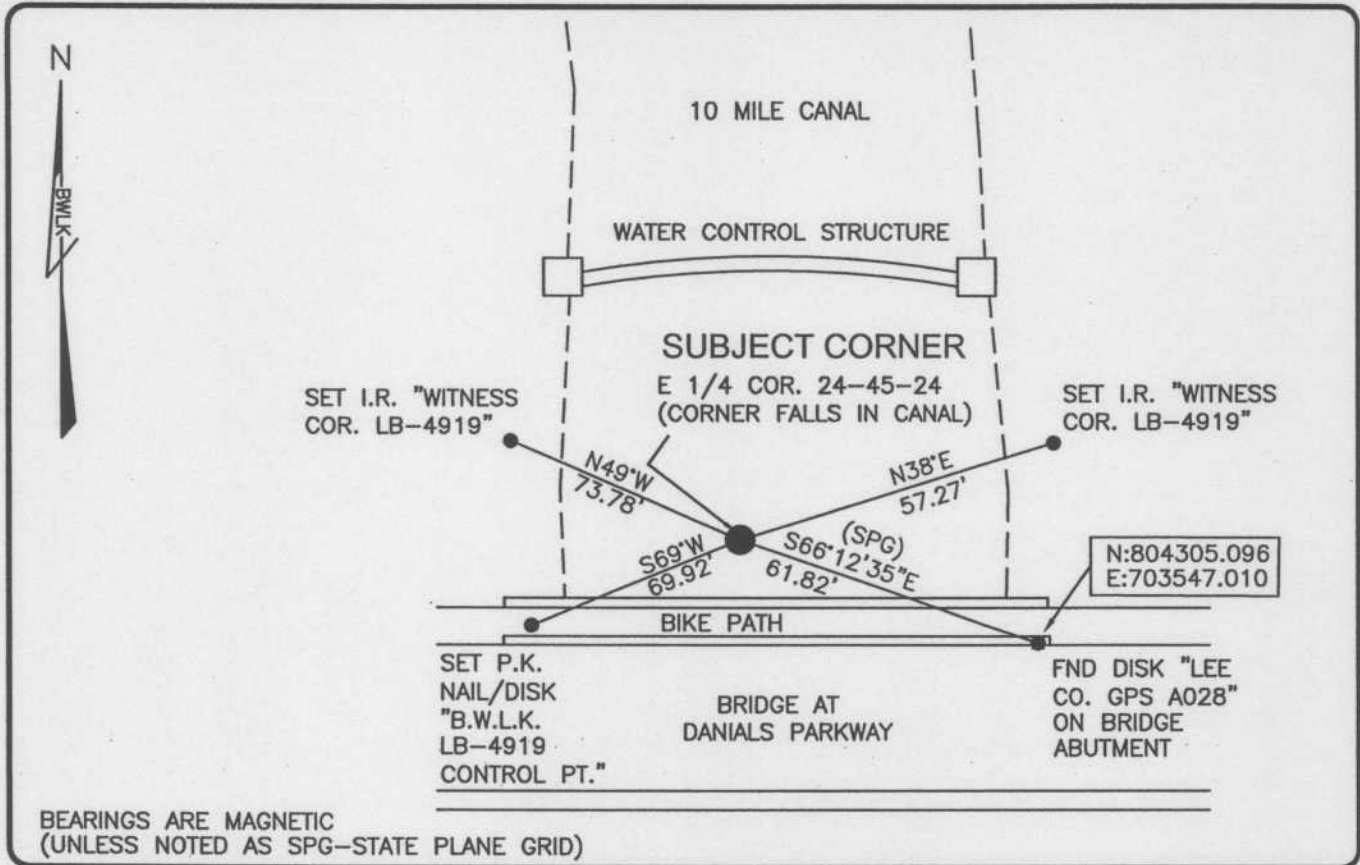


LAND CORNER RECORD

PUBLIC WORKS
LEE COUNTY, FLORIDA

Address - 1500 Monroe St., Ft. Myers, Fla. 33901

Phone : (239) 479-8900

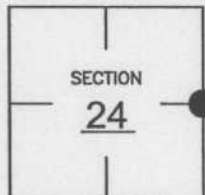


COMMENTS:

CORNER IS OBLITERATED. VALUES FOR SAID CORNER ARE FROM "10 MILE FILTER MARSH" SURVEY BY JAMES R. COLEMAN AND ASSOCIATES DATED SEPT. 2002. VERIFIED DIMENSIONS OF SECTION 24 WITH HISTORICAL RECORDS.

CORNER DESCRIPTION

E1/4 Corner
Section 24
Township 45
Range 24



HORIZONTAL POSITION INFORMATION

Florida West Zone, NAD 1983(1990 Adjustment)

Northing(ft) 804330.03 Easting(ft) 703490.44

Latitude 26°32'47.1699 Longitude 81°51'18.8704"

Scale Factor 0.99994

EXISTING CERTIFIED CORNER RECORDS

Document No.	Date
NONE	NONE

The above documents are based on FDEP Bureau of Surveying and Mapping Record Information.

I hereby certify the monument and accessories shown above were field located on 3-23-04.

Scott C. Whitaker
SCOTT C. WHITAKER
Professional Surveyor and Mapper
Florida Certificate No. 4324
Date Signed 4-07-04

BEAN, WHITAKER, LUTZ & KAREH, INC. (LB 4919)
13041 McGregor Boulevard
Fort Myers, Florida 33919-5910
Phone: (239) 481-1331

POINT NO. 6071

BLM REFERENCE NO. T45SR24E700340