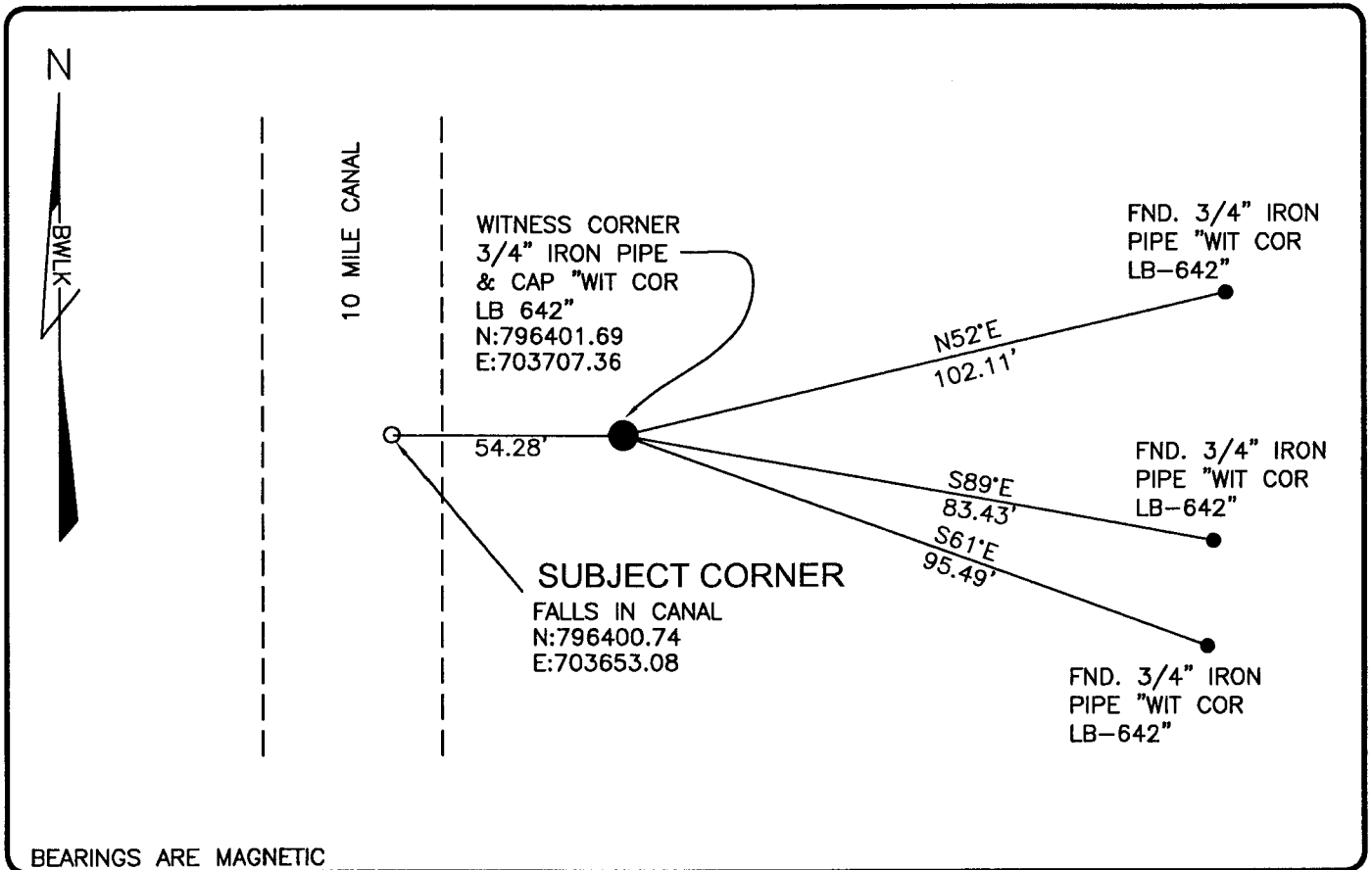


PUBLIC WORKS
LEE COUNTY, FLORIDA

Address - 1500 Monroe St., Ft. Myers, Fla. 33901

Phone : (239) 479-8900

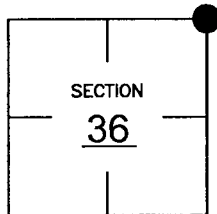


COMMENTS:

LOCATION OF CORNER CALCULATED FROM REFERENCE TIES
IN CCR 71513.

CORNER DESCRIPTION

NE Corner
Section 36
Township 45
Range 24



HORIZONTAL POSITION INFORMATION

Florida West Zone, NAD 1983(1990 Adjustment)

Northing(ft) 796400.74 Easting(ft) 703653.08

Latitude 26°31'28.63513" Longitude 81°51'17.17835"

Scale Factor 0.99994

EXISTING CERTIFIED CORNER RECORDS

Document No.	Date
<u>15128</u>	<u>9-23-82</u>
<u>71513</u>	<u>4-02-01</u>
_____	_____
_____	_____

The above documents are based on FDEP Bureau of Surveying and Mapping Record Information.

I hereby certify the monument and accessories shown above were field located on 10-23-03.

SCOTT C. WHITAKER
Professional Surveyor and Mapper
Florida Certificate No. 4324
Date Signed 2-23-04

BEAN, WHITAKER, LUTZ & KAREH, INC. (LB 4919)
13041 McGregor Boulevard
Fort Myers, Florida 33919-5910
Phone: (239) 481-1331

POINT NO. 6070

BLM REFERENCE NO. T45SR24E700200