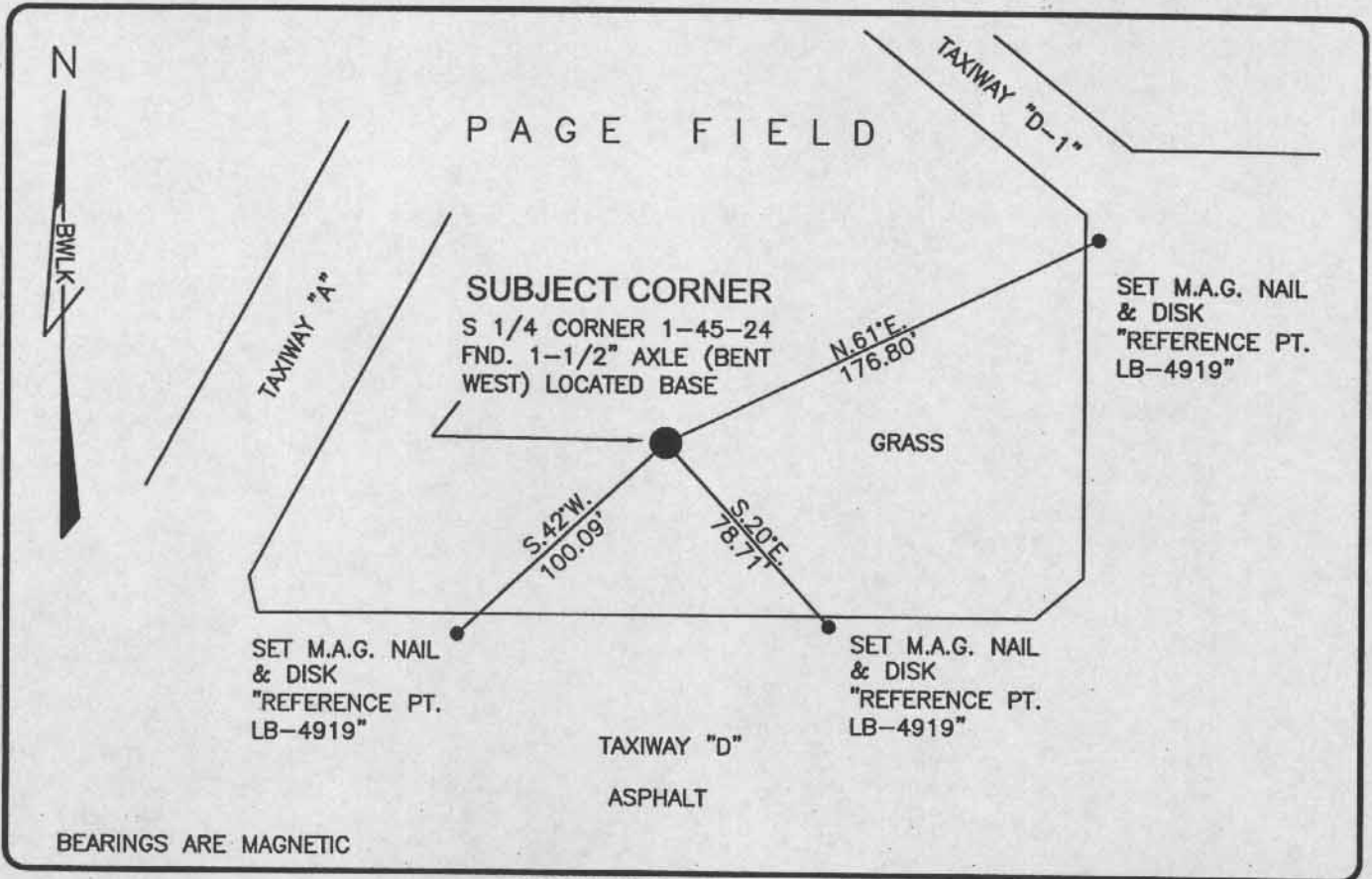


LAND CORNER RECORD

PUBLIC WORKS
LEE COUNTY, FLORIDA

Address - 1500 Monroe St., Ft. Myers, Fla. 33901

Phone : (239) 479-8900

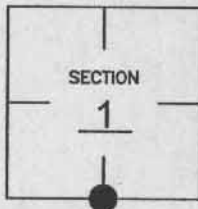


COMMENTS:

CORNER RECOVERED AS SHOWN ON CCR 37940. NEW REFERENCES WERE SET DUE TO THE FACT THAT THE TAXIWAY HAS BEEN REPAVED. VERIFIED LOCATION BASED ON HISTORICAL RECORDS.

CORNER DESCRIPTION

S1/4 Corner
Section 1
Township 45
Range 24



HORIZONTAL POSITION INFORMATION

Florida West Zone, NAD 1983(1990 Adjustment)

Northing(ft) 817521.59 Easting(ft) 700741.84

Latitude 26°34'57.85047" Longitude 81°51'48.98334"

Scale Factor 0.99994

EXISTING CERTIFIED CORNER RECORDS

Document No.	Date
37940	1-24-91

The above documents are based on FDEP Bureau of Surveying and Mapping Record Information.

I hereby certify the monument and accessories shown above were field located on 3-23-04

Scott C. Whitaker
SCOTT C. WHITAKER
Professional Surveyor and Mapper
Florida Certificate No. 4324
Date Signed 4-07-04

BEAN, WHITAKER, LUTZ & KAREH, INC. (LB 4919)
13041 McGregor Boulevard
Fort Myers, Florida 33919-5910
Phone: (239) 481-1331

POINT NO. 5016

BLM REFERENCE NO. T45SR24E640600