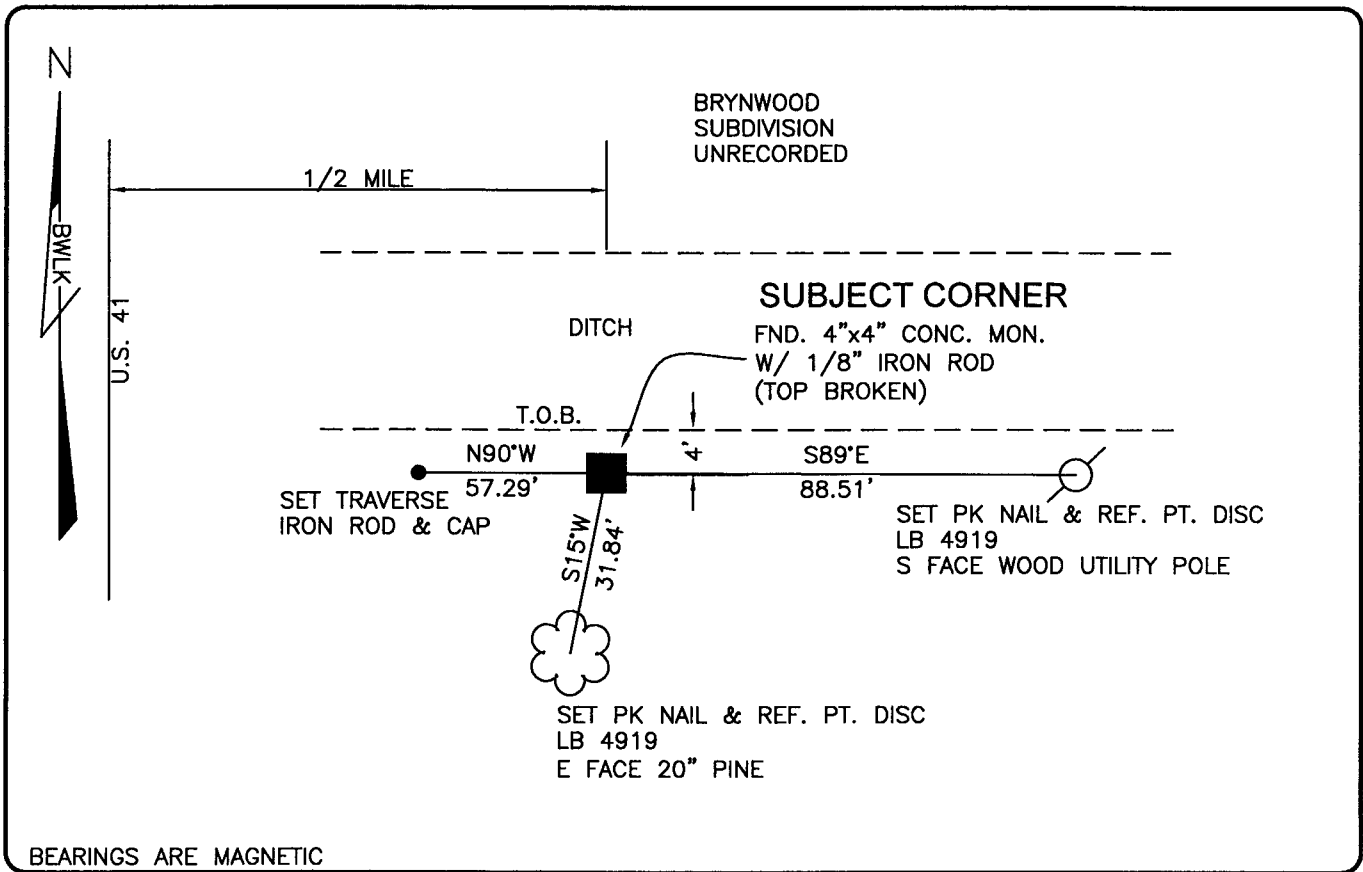


PUBLIC WORKS  
LEE COUNTY, FLORIDA

Address - 1500 Monroe St., Ft. Myers, Fla. 33901

Phone : (239) 479-8900

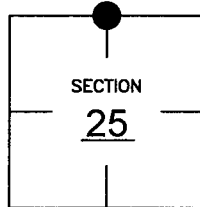


COMMENTS:

HISTORICAL RECORDS INDICATE THIS CORNER IS THE SAME MONUMENT USED FOR THE UNRECORDED PLAT OF BRYNWOOD DATED DECEMBER 1967.

CORNER DESCRIPTION

N 1/4 Corner  
Section 25  
Township 45  
Range 24



HORIZONTAL POSITION INFORMATION

Florida West Zone, NAD 1983(1990 Adjustment)

Northing(ft) 801645.28 Easting(ft) 700908.09

Latitude 26°32'20.60777" Longitude 81°51'47.33883"

Scale Factor 0.99994

EXISTING CERTIFIED CORNER RECORDS

Document No.	Date

The above documents are based on FDEP Bureau of Surveying and Mapping Record Information.

I hereby certify the monument and accessories shown above were field located on 10-27-03.

SCOTT C. WHITAKER  
Professional Surveyor and Mapper  
Florida Certificate No. 4324  
Date Signed 2-23-04

BEAN, WHITAKER, LUTZ & KAREH, INC. (LB 4919)  
13041 McGregor Boulevard  
Fort Myers, Florida 33919-5910  
Phone: (239) 481-1331

POINT NO. 5186

BLM REFERENCE NO. T45SR24E640300