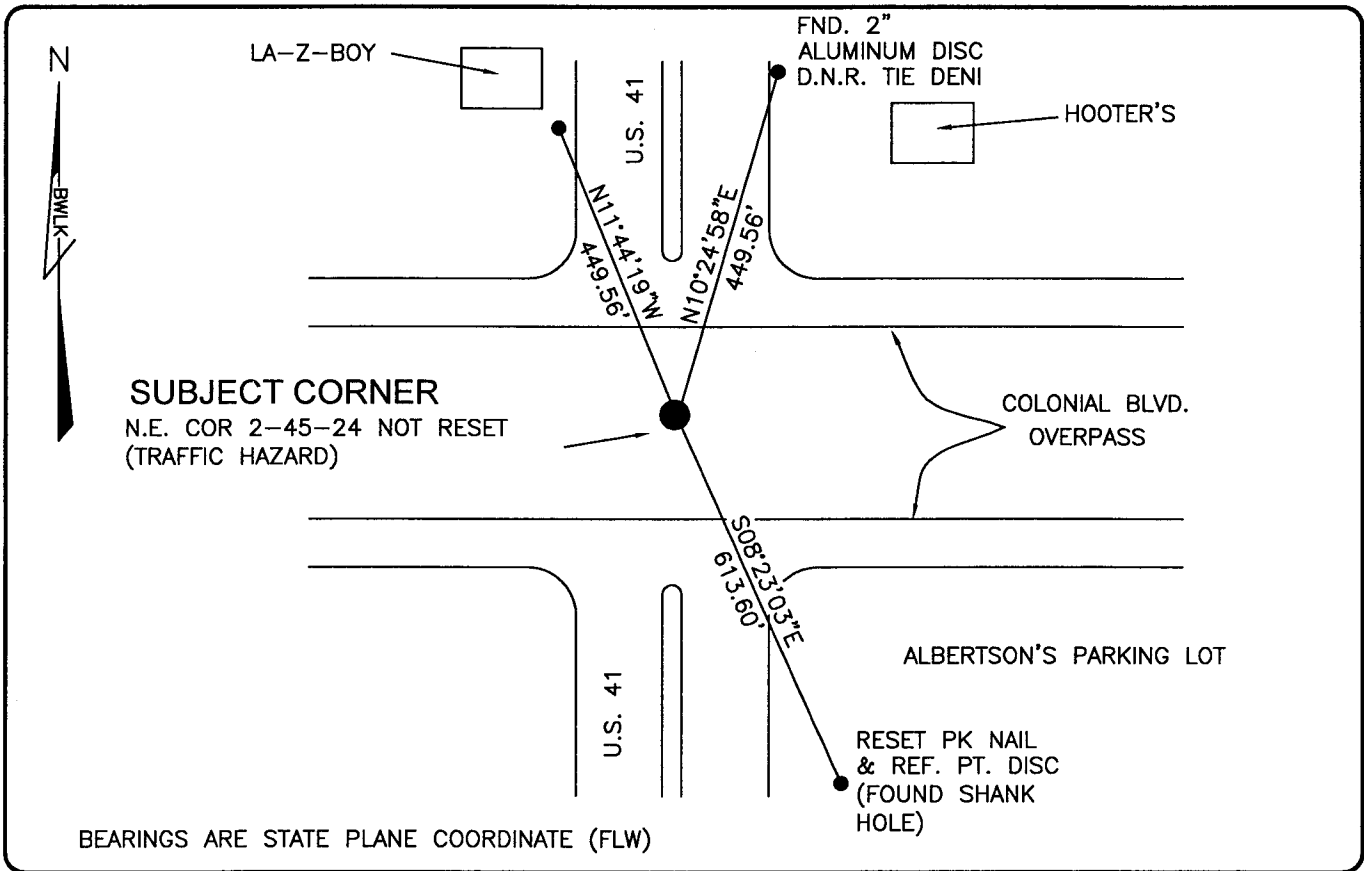


PUBLIC WORKS  
LEE COUNTY, FLORIDA

Address - 1500 Monroe St., Ft. Myers, Fla. 33901

Phone : (239) 479-8900



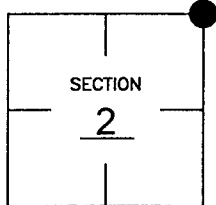
BEARINGS ARE STATE PLANE COORDINATE (FLW)

COMMENTS:

RAILROAD SPIKE FOUND IN 1994 BY DENI ASSOCIATES, INC. NOW GONE SINCE RE-CONSTRUCTION. CORNER NOW FALLS UNDER OVERPASS.

CORNER DESCRIPTION

NE Corner  
 Section 2  
 Township 45  
 Range 24



HORIZONTAL POSITION INFORMATION

Florida West Zone, NAD 1983(1990 Adjustment)

Northing(ft) 822707.51 Easting(ft) 698073.08

Latitude 26d35'49.23958" Longitude 81d52'18.32370"

Scale Factor 0.99994

EXISTING CERTIFIED CORNER RECORDS

Document No.	Date
<u>37934</u>	<u>1-24-91</u>
<u>49271</u>	<u>6-23-94</u>
<u>52772</u>	<u>4-24-95</u>
_____	_____
_____	_____

The above documents are based on FDEP Bureau of Surveying and Mapping Record Information.

I hereby certify the monument and accessories shown above were field located on 12-12-03.

SCOTT C. WHITAKER  
 Professional Surveyor and Mapper  
 Florida Certificate No. 4324  
 Date Signed 1-29-04

BEAN, WHITAKER, LUTZ & KAREH, INC. (LB 4919)  
 13041 McGregor Boulevard  
 Fort Myers, Florida 33919-5910  
 Phone: (239) 481-1331

POINT NO. 5401

BLM REFERENCE NO. T45SR24E600700