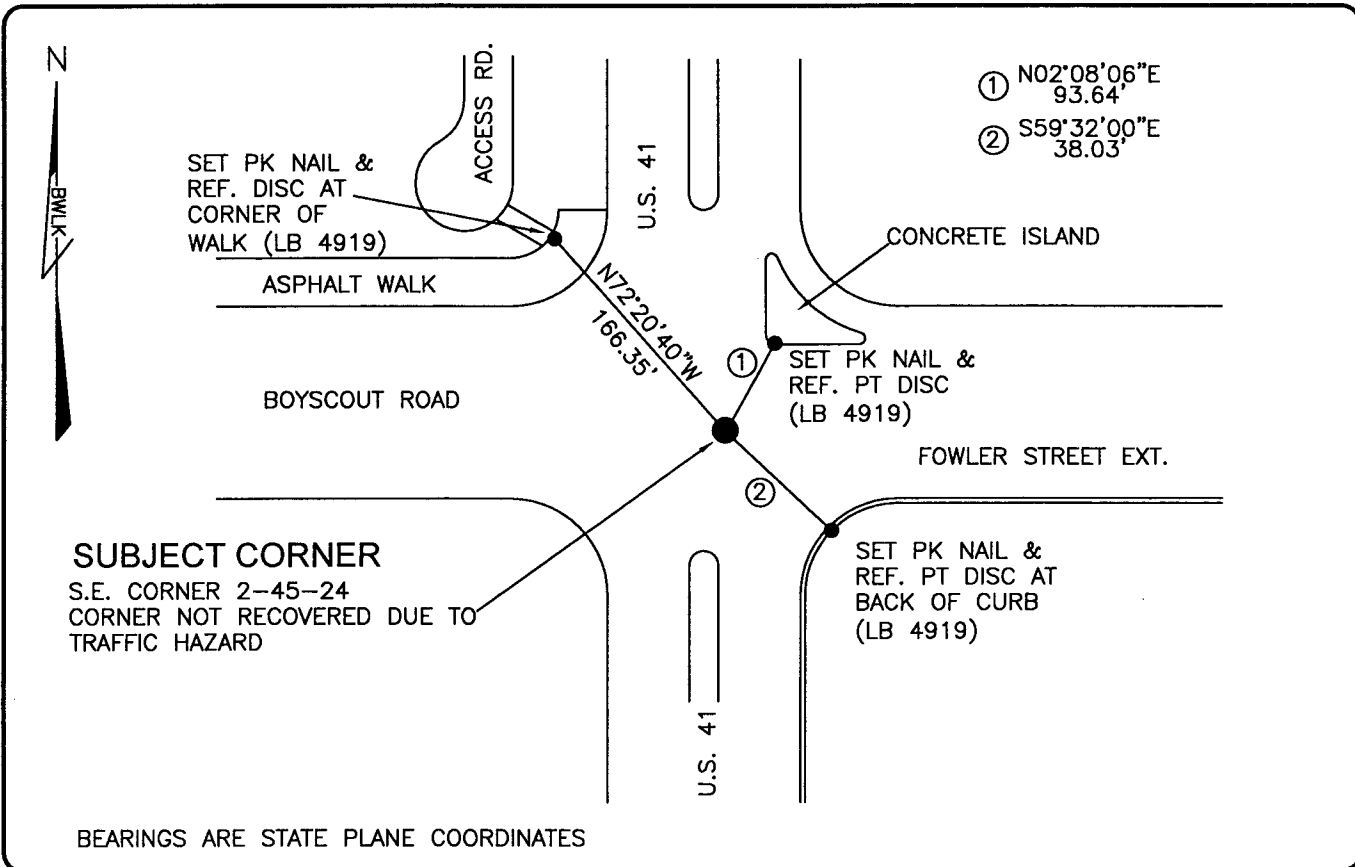


PUBLIC WORKS
LEE COUNTY, FLORIDA

Address - 1500 Monroe St., Ft. Myers, Fla. 33901

Phone : (239) 479-8900

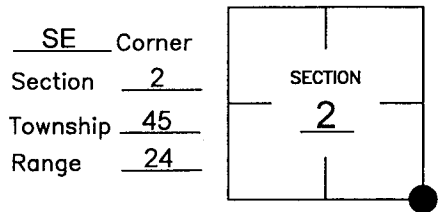


BEARINGS ARE STATE PLANE COORDINATES

COMMENTS:

DENI ASSOCIATES FOUND 4"x4" CONC. MONUMENT ON THE EAST SIDE OF U.S. 41 IN 1991. CORNER HAS SINCE BEEN DESTROYED BY ROAD CONSTRUCTION. CORNER RE-ESTABLISHED BY CCR 37936 COORDINATE VALUES AND COMPARISON TO HISTORICAL SURVEY RECORDS.

CORNER DESCRIPTION



HORIZONTAL POSITION INFORMATION

Florida West Zone, NAD 1983(1990 Adjustment)
Northing(ft) 817509.40 Easting(ft) 698085.04
Latitude 26d34'57.75693" Longitude 81d52'18.24932"
Scale Factor 0.99994

EXISTING CERTIFIED CORNER RECORDS

Document No.	Date
<u>6567</u>	<u>4-14-80</u>
<u>7623</u>	<u>6-02-80</u>
<u>14400</u>	<u>5-18-82</u>
<u>37936</u>	<u>1-24-91</u>

The above documents are based on FDEP Bureau of Surveying and Mapping Record Information.

I hereby certify the monument and accessories shown above were field located on 12-12-03.

Scott C. Whitaker
SCOTT C. WHITAKER
Professional Surveyor and Mapper
Florida Certificate No. 4324
Date Signed 1-29-04

BEAN, WHITAKER, LUTZ & KAREH, INC. (LB 4919)
13041 McGregor Boulevard
Fort Myers, Florida 33919-5910
Phone: (239) 481-1331

POINT NO. 6030

BLM REFERENCE NO. T45SR24E600600