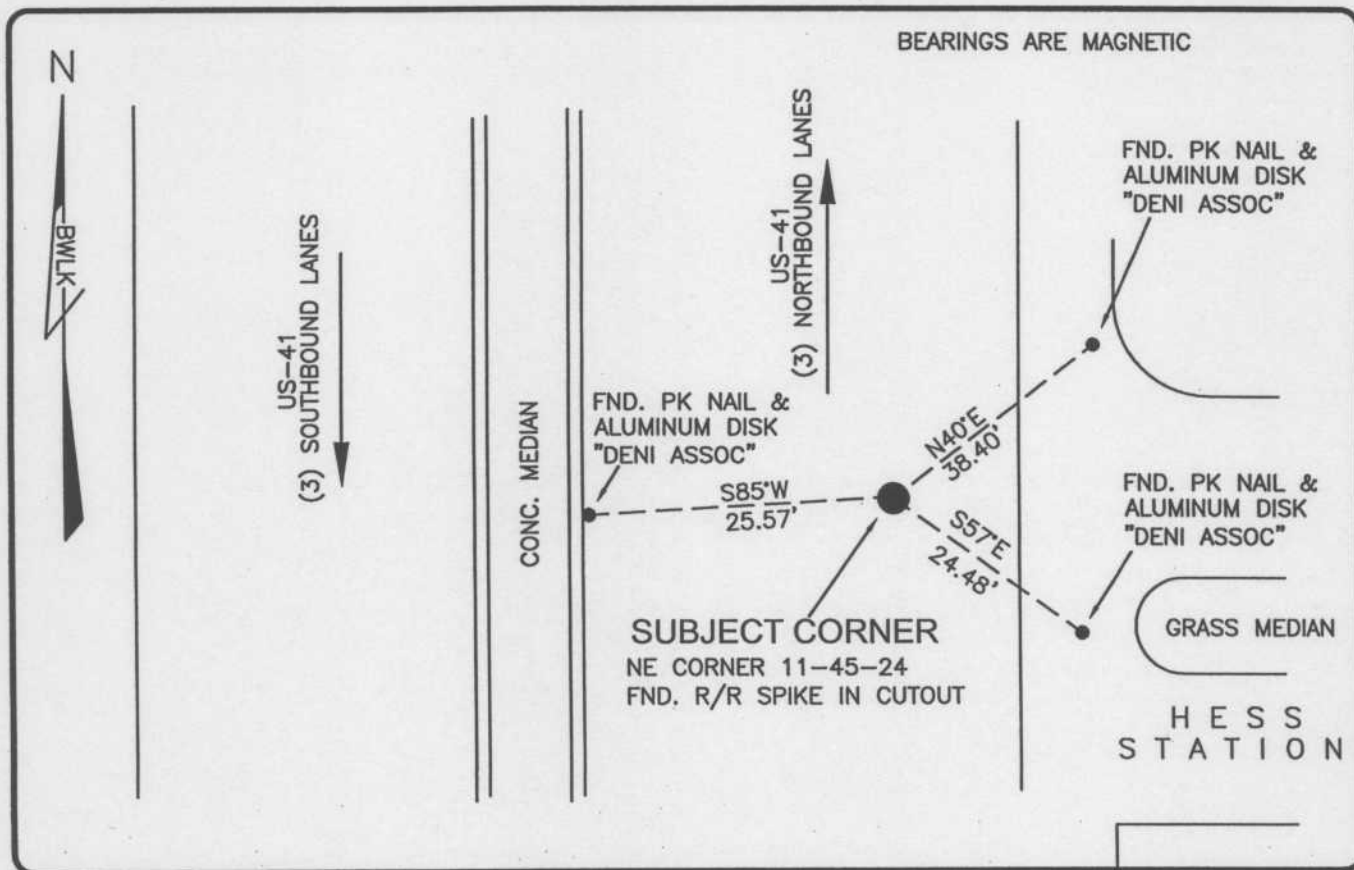


LAND CORNER RECORD

PUBLIC WORKS  
LEE COUNTY, FLORIDA

Address - 1500 Monroe St., Ft. Myers, Fla. 33901

Phone : (239) 479-8900



BEARINGS ARE MAGNETIC

CONC. MEDIAN

FND. PK NAIL & ALUMINUM DISK "DENI ASSOC"

FND. PK NAIL & ALUMINUM DISK "DENI ASSOC"

FND. PK NAIL & ALUMINUM DISK "DENI ASSOC"

SUBJECT CORNER  
NE CORNER 11-45-24  
FND. R/R SPIKE IN CUTOUT

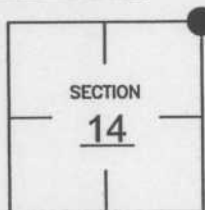
GRASS MEDIAN

H E S S  
S T A T I O N

COMMENTS:  
GENERALLY ACCEPTED CORNER BY LOCAL SURVEYORS.  
CORNER AND (2) REFERENCES RECOVERED AS SHOWN ON  
CCR 37938. OBSERVED VALUES DIFFER FROM PUBLISHED  
VALUES BY 0.38'. HELD OBSERVED VALUES.

CORNER DESCRIPTION

NE Corner  
Section 14  
Township 45  
Range 24



HORIZONTAL POSITION INFORMATION

Florida West Zone, NAD 1983(1990 Adjustment)  
Northing(ft) 812204.44 Easting(ft) 698029.77  
Latitude 26°34'05.2166" Longitude 81°52'18.9166"  
Scale Factor 0.99994

EXISTING CERTIFIED CORNER RECORDS

Document No.	Date
<u>7624</u>	<u>6-02-80</u>
<u>37938</u>	<u>1-24-91</u>

The above documents are based on FDEP Bureau of Surveying and Mapping Record Information.

I hereby certify the monument and accessories shown above were field located on 10-29-03.

*Scott C. Whitaker*  
SCOTT C. WHITAKER  
Professional Surveyor and Mapper  
Florida Certificate No. 4324  
Date Signed 4-07-04

BEAN, WHITAKER, LUTZ & KAREH, INC. (LB 4919)  
13041 McGregor Boulevard  
Fort Myers, Florida 33919-5910  
Phone: (239) 481-1331

POINT NO. 5255

BLM REFERENCE NO. T45SR24E600500