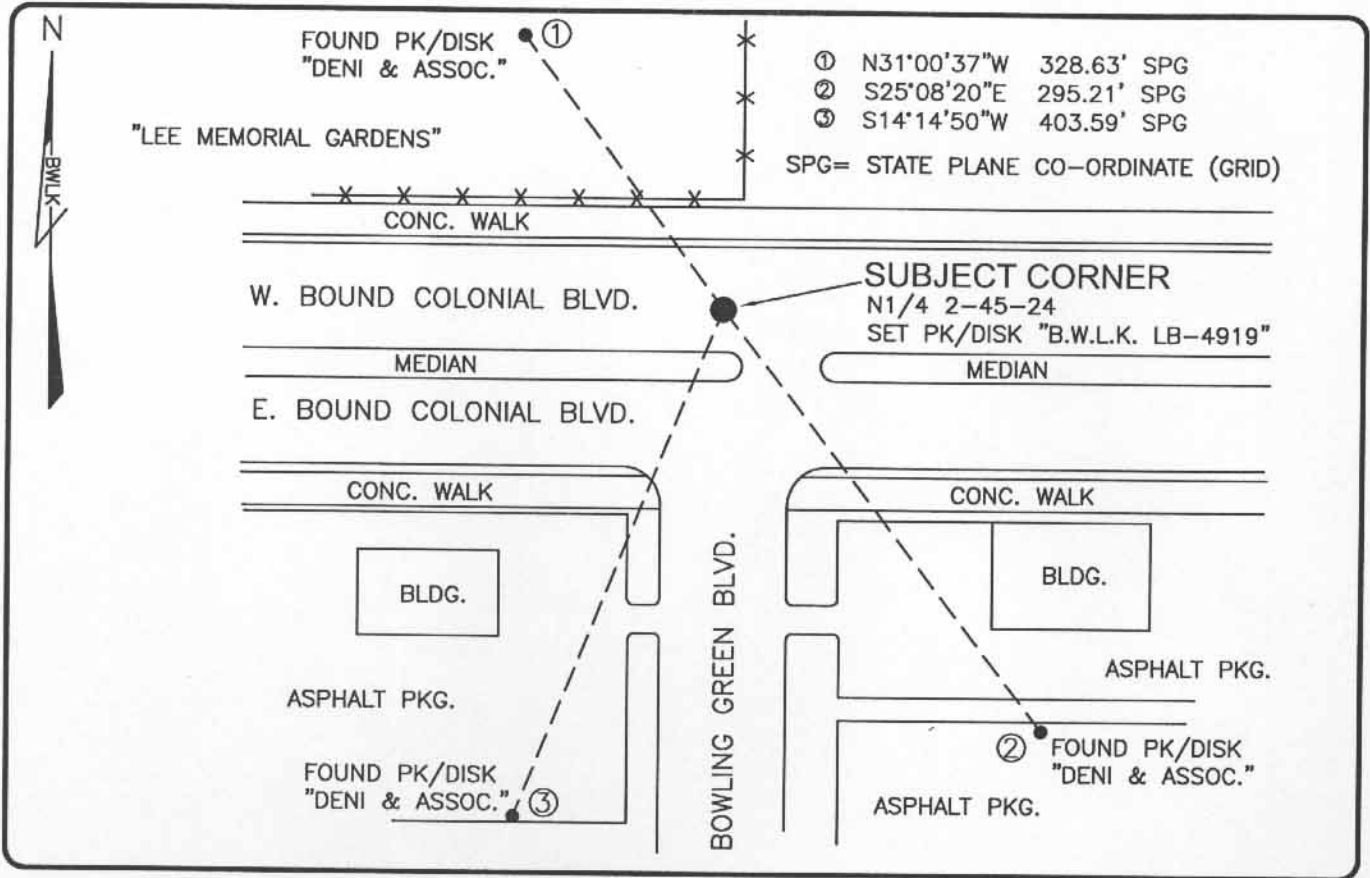


LAND CORNER RECORD

PUBLIC WORKS  
LEE COUNTY, FLORIDA

Address - 1500 Monroe St., Ft. Myers, Fla. 33901

Phone : (239) 479-8900



- ① N31°00'37"W 328.63' SPG
  - ② S25°08'20"E 295.21' SPG
  - ③ S14°14'50"W 403.59' SPG
- SPG= STATE PLANE CO-ORDINATE (GRID)

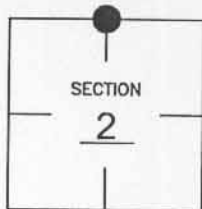
**SUBJECT CORNER**  
N1/4 2-45-24  
SET PK/DISK "B.W.L.K. LB-4919"

COMMENTS:

RESET CORNER FROM REFERENCES AS SHOWN ON CCR 49270. CORNER IS IN HARMONY WITH HISTORICAL RECORDS OF SECTION 2.

CORNER DESCRIPTION

N1/4 Corner  
Section 2  
Township 45  
Range 24



HORIZONTAL POSITION INFORMATION

Florida West Zone, NAD 1983(1990 Adjustment)  
 Northing(ft) 822666.322 Easting(ft) 695430.211  
 Latitude 26°35'48.85705" Longitude 81°52'47.44014"  
 Scale Factor 0.99994

EXISTING CERTIFIED CORNER RECORDS

Document No.	Date
49270	6-22-94

The above documents are based on FDEP Bureau of Surveying and Mapping Record Information.

I hereby certify the monument and accessories shown above were field located on 1-09-04.

*Scott C. Whitaker*  
 SCOTT C. WHITAKER  
 Professional Surveyor and Mapper  
 Florida Certificate No. 4324  
 Date Signed 5-07-04

BEAN, WHITAKER, LUTZ & KAREH, INC. (LB 4919)  
 13041 McGregor Boulevard  
 Fort Myers, Florida 33919-5910  
 Phone: (239) 481-1331

POINT NO. 5013

BLM REFERENCE NO. T45SR24E540700