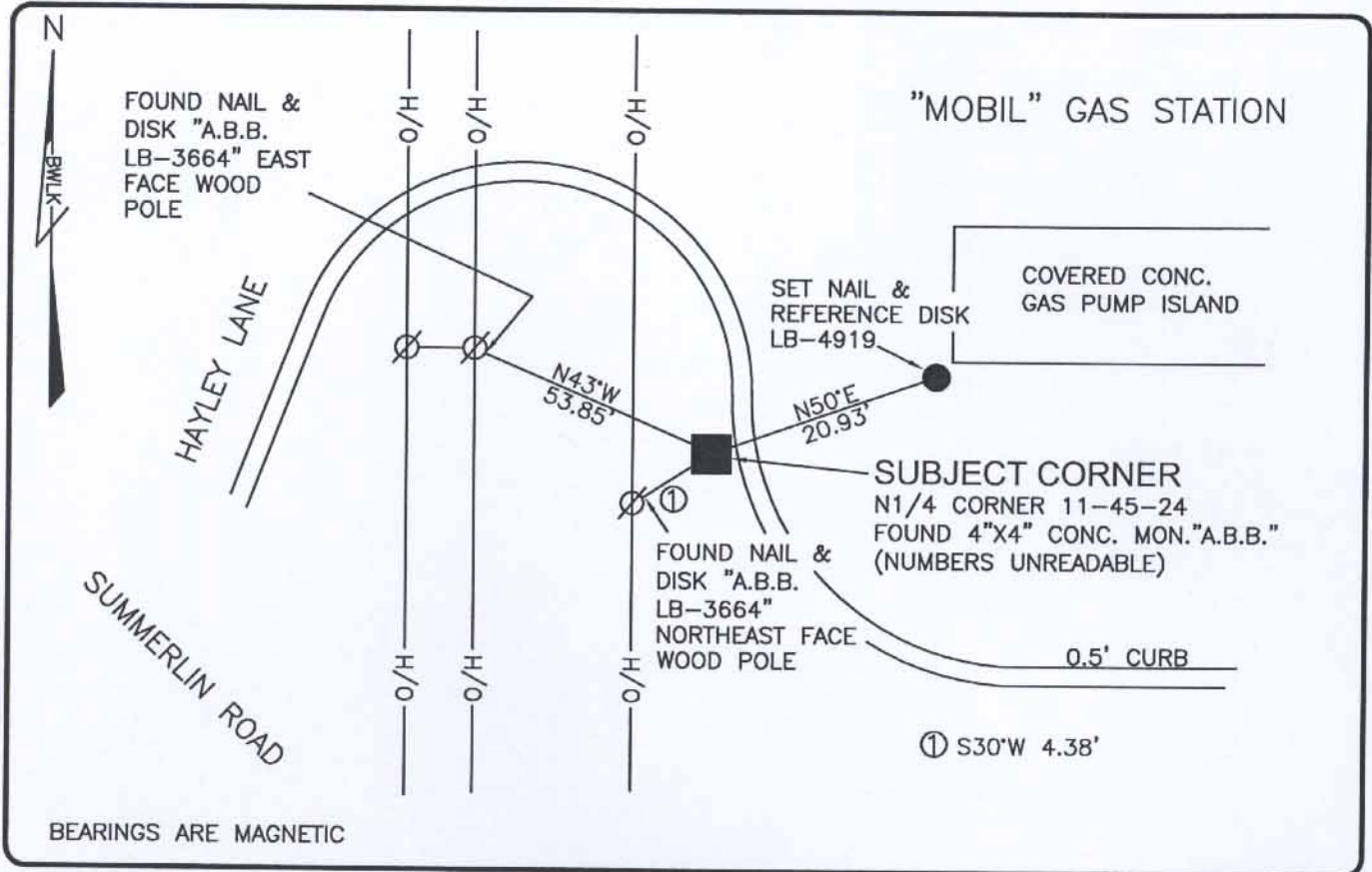


LAND CORNER RECORD

PUBLIC WORKS
LEE COUNTY, FLORIDA

Address - 1500 Monroe St., Ft. Myers, Fla. 33901

Phone : (239) 479-8900

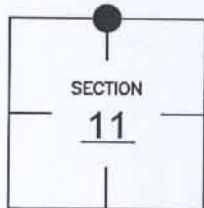


COMMENTS:

FOUND 4"X4" CONCRETE MONUMENT. ALL CCR REFERENCES WERE GONE.

CORNER DESCRIPTION

N1/4 Corner
Section 11
Township 45
Range 24



HORIZONTAL POSITION INFORMATION

Florida West Zone, NAD 1983(1990 Adjustment)

Northing(ft) 817470.06 Easting(ft) 695435.66

Latitude 26°34'57.39272" Longitude 81°52'47.43388"

Scale Factor 0.99994

EXISTING CERTIFIED CORNER RECORDS

Document No.	Date
<u>17887</u>	<u>12-15-83</u>
<u>18991</u>	<u>5-18-84</u>

The above documents are based on FDEP Bureau of Surveying and Mapping Record Information.

I hereby certify the monument and accessories shown above were field located on 10-29-03.

Scott C. Whitaker

SCOTT C. WHITAKER
Professional Surveyor and Mapper
Florida Certificate No. 4324
Date Signed 5-07-04

BEAN, WHITAKER, LUTZ & KAREH, INC. (LB 4919)
13041 McGregor Boulevard
Fort Myers, Florida 33919-5910
Phone: (239) 481-1331

POINT NO. 5158

BLM REFERENCE NO. T45SR24E540600