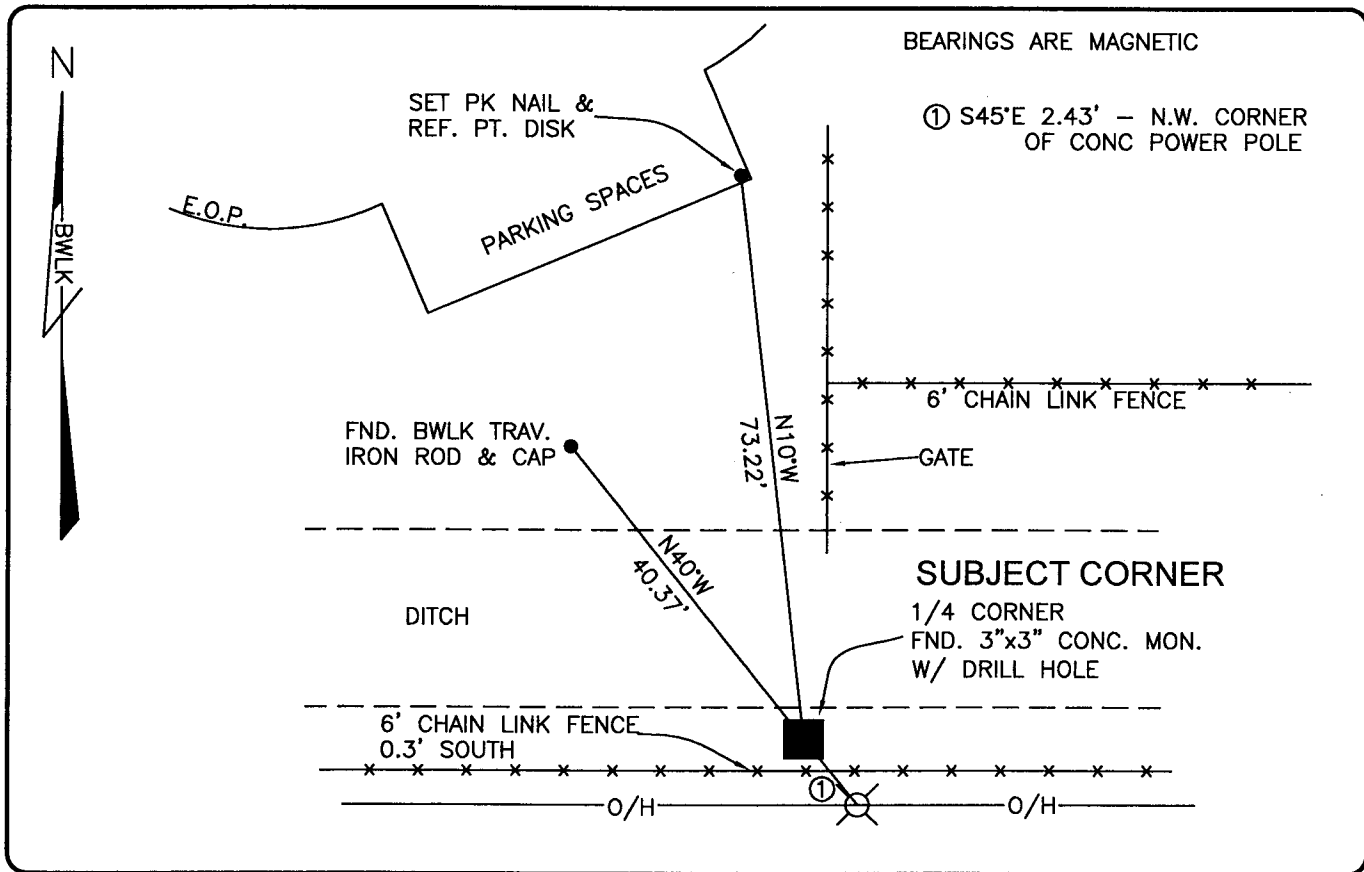


PUBLIC WORKS
LEE COUNTY, FLORIDA

Address - 1500 Monroe St., Ft. Myers, Fla. 33901

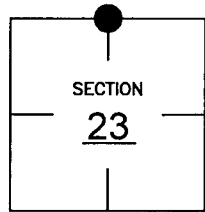
Phone : (239) 479-8900



COMMENTS:
GENERALLY ACCEPTED CORNER BY LOCAL SURVEYORS.

CORNER DESCRIPTION

 N 1/4 Corner
 Section 23
 Township 45
 Range 24



HORIZONTAL POSITION INFORMATION

Florida West Zone, NAD 1983(1990 Adjustment)
 Northing(ft) 806868.33 Easting(ft) 695608.85
 Latitude 26°33'12.39035" Longitude 81°52'45.63608"
 Scale Factor 0.99994

EXISTING CERTIFIED CORNER RECORDS

Document No.	Date
<u> 34264 </u>	<u> 12-18-89 </u>
<u> 68950 </u>	<u> 9-11-00 </u>
_____	_____
_____	_____

The above documents are based on FDEP Bureau of Surveying and Mapping Record Information.

I hereby certify the monument and accessories shown above were field located on 1-16-04 .

Scott C. Whitaker
 SCOTT C. WHITAKER
 Professional Surveyor and Mapper
 Florida Certificate No. 4324
 Date Signed 2-23-04

BEAN, WHITAKER, LUTZ & KAREH, INC. (LB 4919)
 13041 McGregor Boulevard
 Fort Myers, Florida 33919-5910
 Phone: (239) 481-1331

POINT NO. 5453

BLM REFERENCE NO. T45SR24E540400