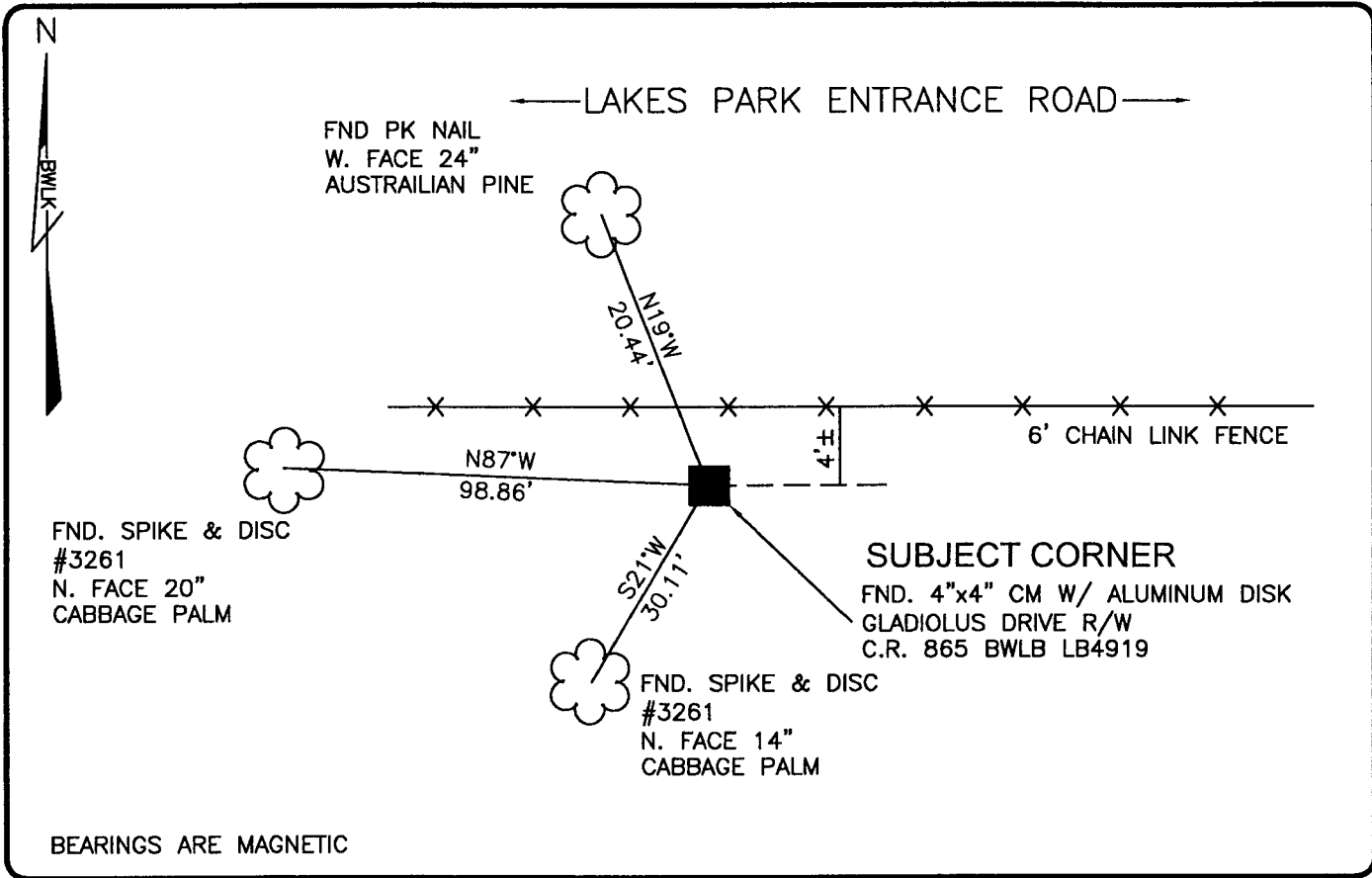


PUBLIC WORKS
LEE COUNTY, FLORIDA

Address - 1500 Monroe St., Ft. Myers, Fla. 33901

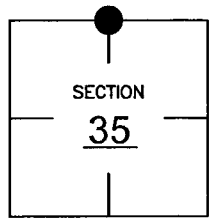
Phone : (239) 479-8900



COMMENTS:
FND. 1/2" IRON PIPE IN 1986 AND REPLACED WITH 4"x4" CM IN 1990. COORDINATE VALUES VARY FROM CCR ON FILE (68793) BY 0.5'. CORNER HAS BEEN GENERALLY ACCEPTED BY LOCAL SURVEYORS.

CORNER DESCRIPTION

N 1/4 Corner
Section 35
Township 45
Range 24



HORIZONTAL POSITION INFORMATION

Florida West Zone, NAD 1983(1990 Adjustment)
 Northing(ft) 796285.25 Easting(ft) 695699.76
 Latitude 26d31'27.57299" Longitude 81d52'44.74480"
 Scale Factor 0.9994

EXISTING CERTIFIED CORNER RECORDS

Document No.	Date
<u>24704</u>	<u>12-22-86</u>
<u>68793</u>	<u>3-23-00</u>

The above documents are based on FDEP Bureau of Surveying and Mapping Record Information.

I hereby certify the monument and accessories shown above were field located on 10-24-03.

Scott C. Whitaker
 SCOTT C. WHITAKER
 Professional Surveyor and Mapper
 Florida Certificate No. 4324
 Date Signed 1-29-04

BEAN, WHITAKER, LUTZ & KAREH, INC. (LB 4919)
 13041 McGregor Boulevard
 Fort Myers, Florida 33919-5910
 Phone: (239) 481-1331

POINT NO. 6018

BLM REFERENCE NO. T45SR24E540200