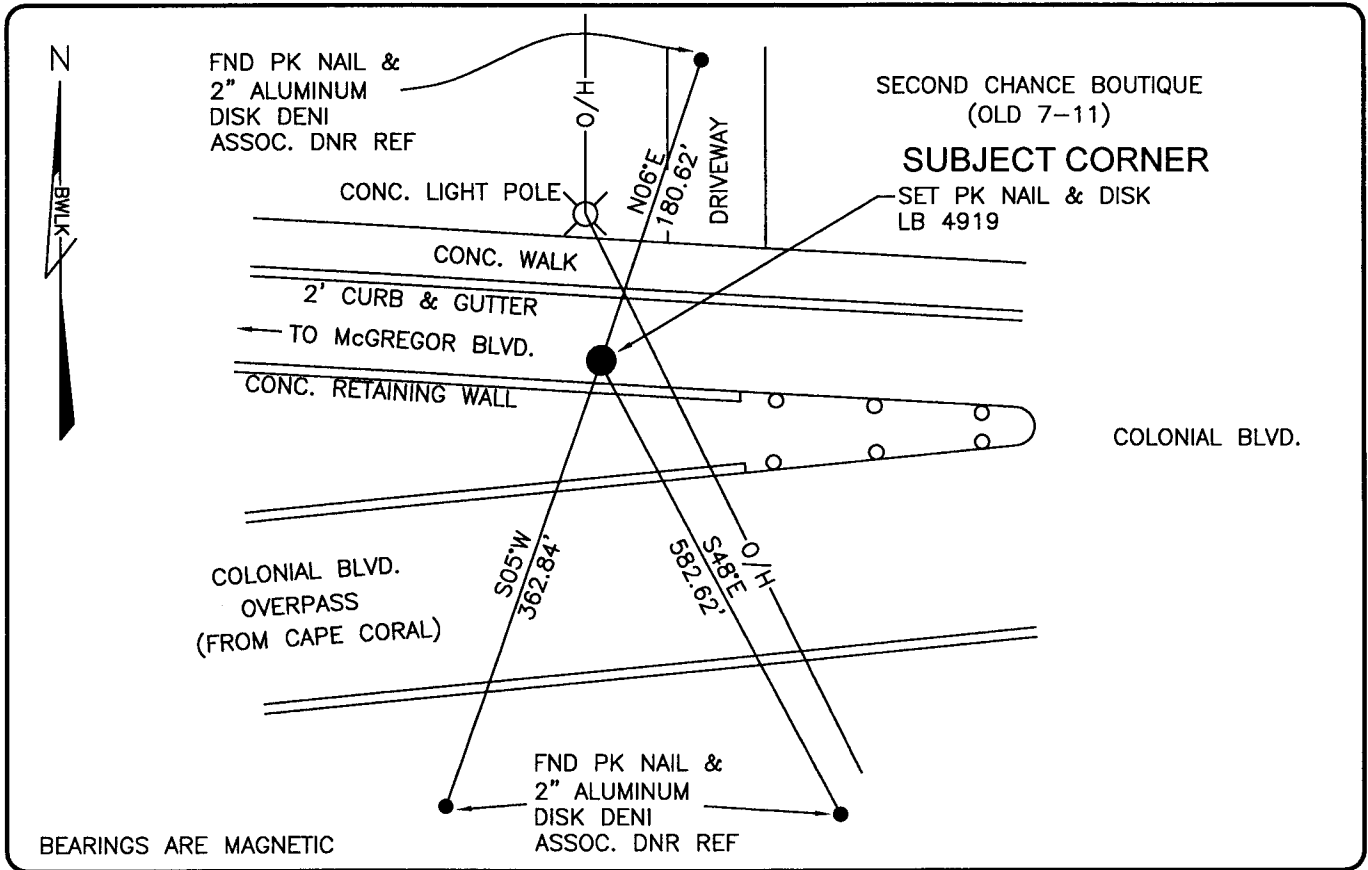


PUBLIC WORKS  
LEE COUNTY, FLORIDA

Address - 1500 Monroe St., Ft. Myers, Fla. 33901

Phone : (239) 479-8900

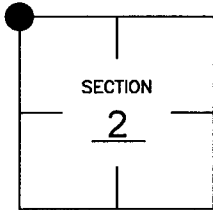


BEARINGS ARE MAGNETIC

COMMENTS:  
FOUND R.R. SPIKE IN 1994. CORNER DESTROYED BY ROAD CONSTRUCTION. RESET BY REFERENCES. C.C.R. #49263.

CORNER DESCRIPTION

NW Corner  
Section 2  
Township 45  
Range 24



HORIZONTAL POSITION INFORMATION

Florida West Zone, NAD 1983(1990 Adjustment)  
Northing(ft) 822619.664 Easting(ft) 692790.835  
Latitude 26d35'48.41866" Longitude 81d53'16.51811"  
Scale Factor 0.99994

EXISTING CERTIFIED CORNER RECORDS

Document No.	Date
<u>49263</u>	<u>7-22-94</u>

The above documents are based on FDEP Bureau of Surveying and Mapping Record Information.

I hereby certify the monument and accessories shown above were field located on 10-23-03.

*Scott C. Whitaker*  
SCOTT C. WHITAKER  
Professional Surveyor and Mapper  
Florida Certificate No. 4324  
Date Signed 1-29-04

BEAN, WHITAKER, LUTZ & KAREH, INC. (LB 4919)  
13041 McGregor Boulevard  
Fort Myers, Florida 33919-5910  
Phone: (239) 481-1331

POINT NO. 5006

BLM REFERENCE NO. T45SR24E500700