

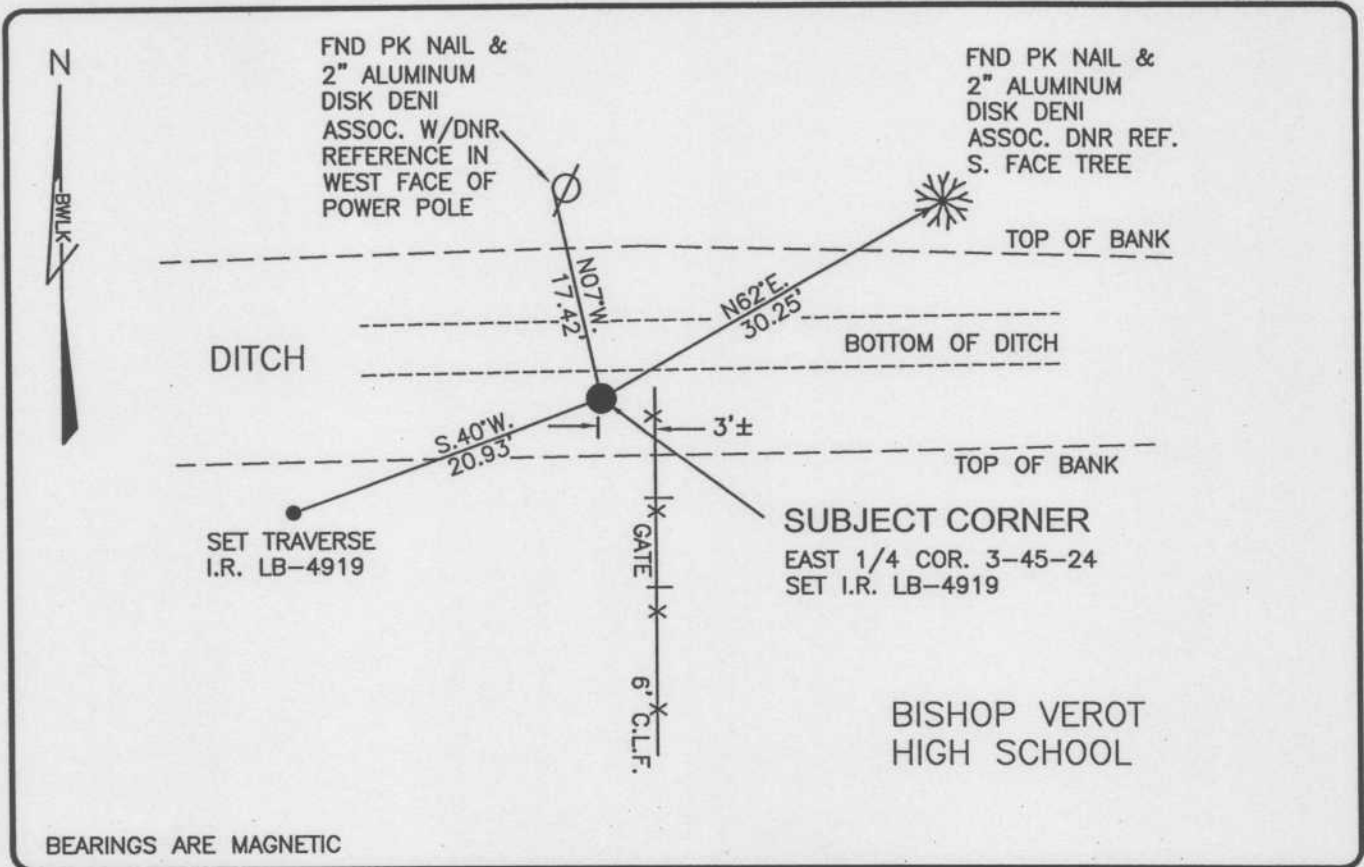
LAND CORNER RECORD

PUBLIC WORKS

LEE COUNTY, FLORIDA

Address - 1500 Monroe St., Ft. Myers, Fla. 33901

Phone : (239) 479-8900



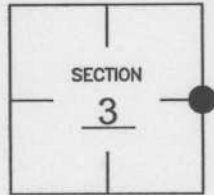
BEARINGS ARE MAGNETIC

COMMENTS:

FOUND BASE OF CONC. MONUMENT IN DITCH (DISTURBED BY DITCH MAINTENANCE). SET I.R. FROM REFERENCE TIES IN C.C.R. 49272.

CORNER DESCRIPTION

E1/4 Corner
 Section 3
 Township 45
 Range 24



HORIZONTAL POSITION INFORMATION

Florida West Zone, NAD 1983(1990 Adjustment)
 Northing(ft) 820071.61 Easting(ft) 692742.53
 Latitude 26°35'23.18295 Longitude 81°53'17.07481"
 Scale Factor 0.99994

EXISTING CERTIFIED CORNER RECORDS

Document No.	Date
<u>17888</u>	<u>12-15-83</u>
<u>49272</u>	<u>5-03-94</u>

The above documents are based on FDEP Bureau of Surveying and Mapping Record Information.

I hereby certify the monument and accessories shown above were field located on 11-21-03

Scott C. Whitaker
 SCOTT C. WHITAKER
 Professional Surveyor and Mapper
 Florida Certificate No. 4324
 Date Signed 4-07-04

BEAN, WHITAKER, LUTZ & KAREH, INC. (LB 4919)
 13041 McGregor Boulevard
 Fort Myers, Florida 33919-5910
 Phone: (239) 481-1331

POINT NO. 5014

BLM REFERENCE NO. T45SR24E500640