

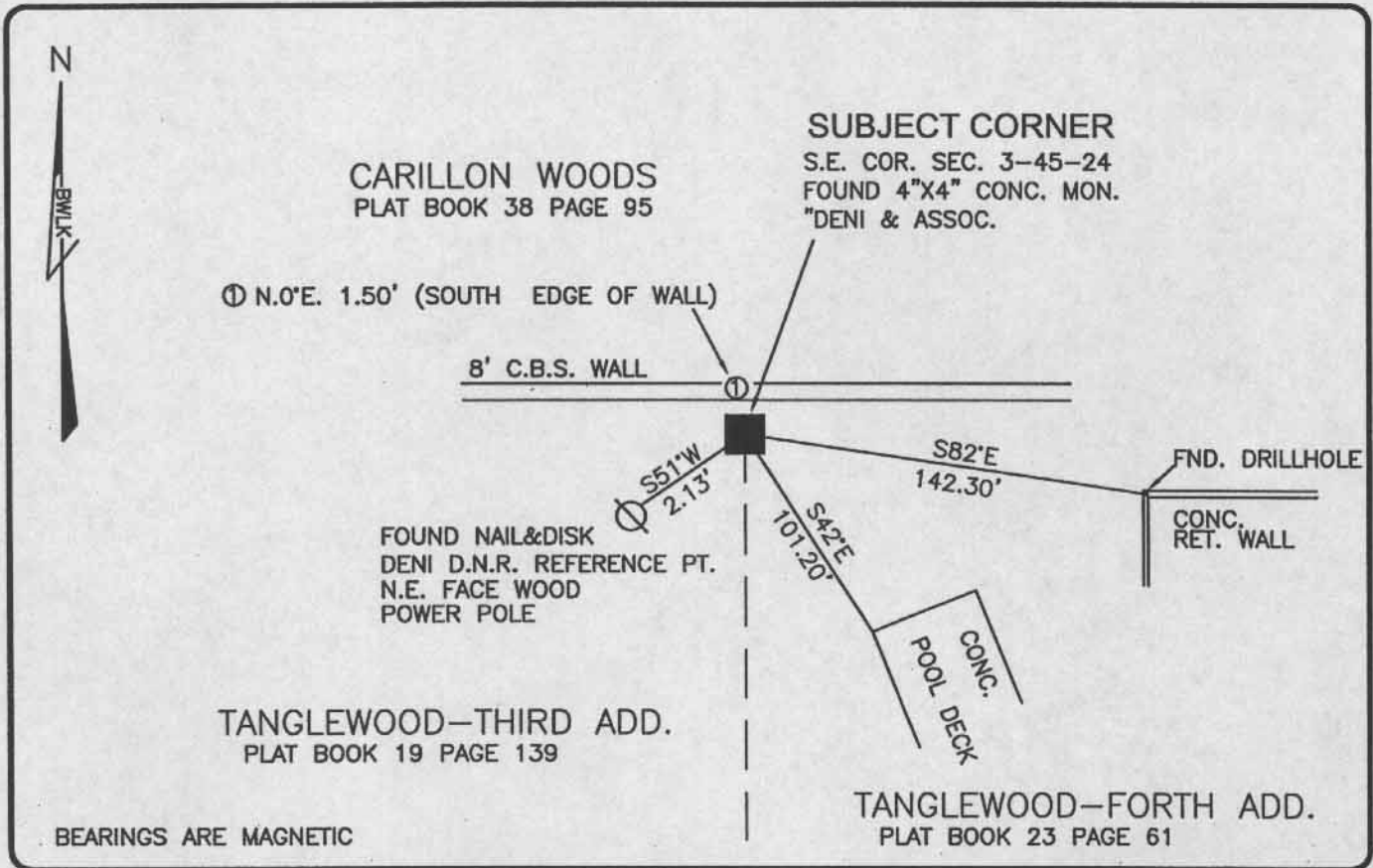
LAND CORNER RECORD

PUBLIC WORKS

LEE COUNTY, FLORIDA

Address - 1500 Monroe St., Ft. Myers, Fla. 33901

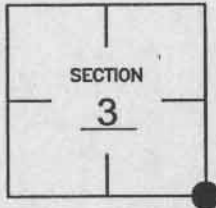
Phone : (239) 479-8900



COMMENTS:
GENERALLY ACCEPTED CORNER BY LOCAL SURVEYORS.
FOUND CORNER AND REFERENCES AS SHOWN ON C.C.R.
49274

CORNER DESCRIPTION

SE Corner
Section 3
Township 45
Range 24



HORIZONTAL POSITION INFORMATION

Florida West Zone, NAD 1983(1990 Adjustment)
Northing(ft) 817423.39 Easting(ft) 692785.35
Latitude 26°34'56.95429" Longitude 81°53'16.62870"
Scale Factor 0.99994

EXISTING CERTIFIED CORNER RECORDS

Document No.	Date
<u>17886</u>	<u>12-15-83</u>
<u>49274</u>	<u>5-02-94</u>

The above documents are based on FDEP Bureau of Surveying and Mapping Record Information.

I hereby certify the monument and accessories shown above were field located on 11-21-03.

Scott C. Whitaker
SCOTT C. WHITAKER
Professional Surveyor and Mapper
Florida Certificate No. 4324
Date Signed 4-07-04

BEAN, WHITAKER, LUTZ & KAREH, INC. (LB 4919)
13041 McGregor Boulevard
Fort Myers, Florida 33919-5910
Phone: (239) 481-1331

POINT NO. 5018

BLM REFERENCE NO. T45SR24E500600