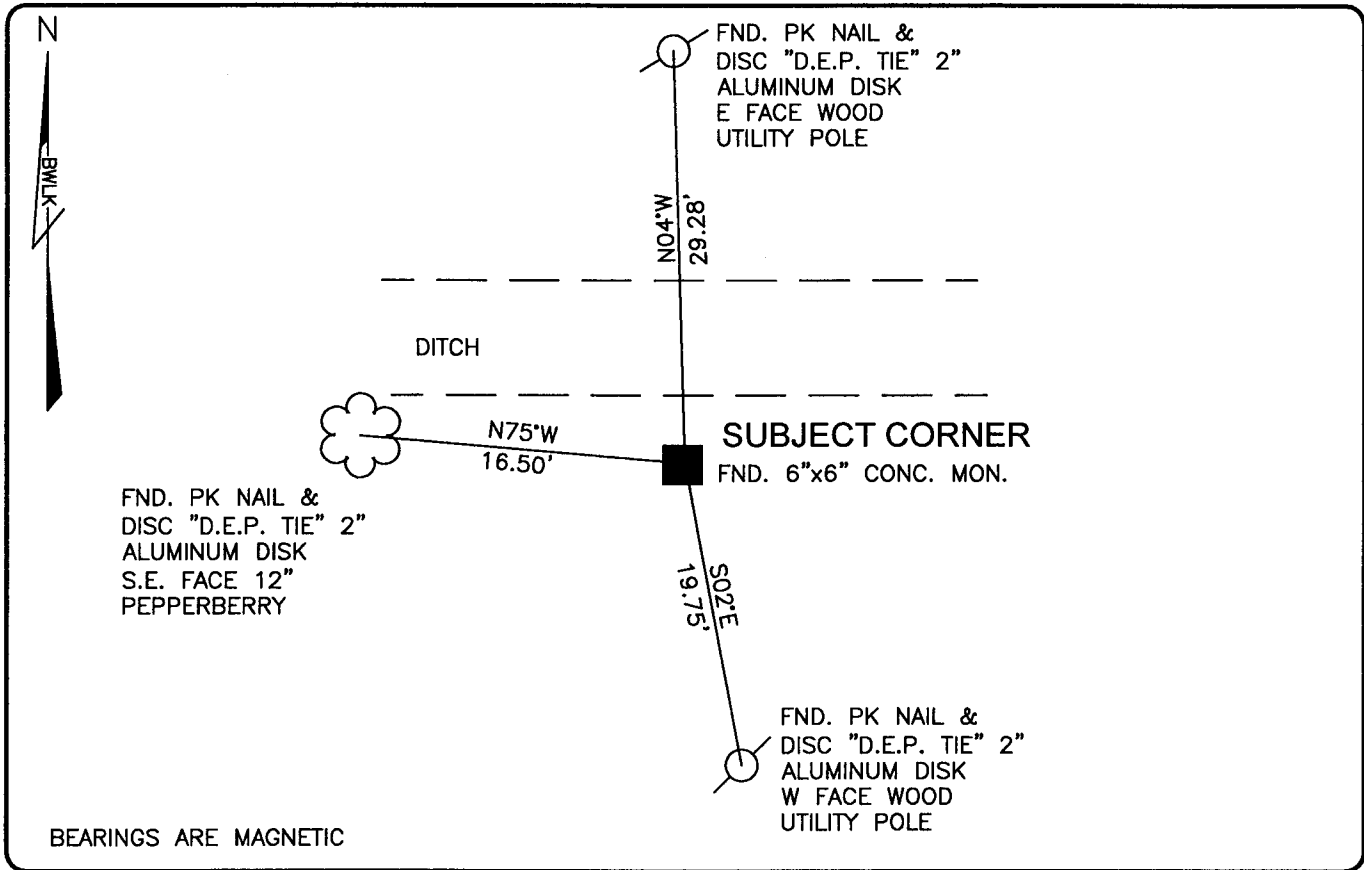


PUBLIC WORKS  
LEE COUNTY, FLORIDA

Address - 1500 Monroe St., Ft. Myers, Fla. 33901

Phone : (239) 479-8900

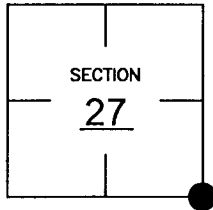


BEARINGS ARE MAGNETIC

COMMENTS:  
FIELD LOCATED POINT IS SAME AS CCR ON FILE.

CORNER DESCRIPTION

SE Corner  
 Section 27  
 Township 45  
 Range 24



HORIZONTAL POSITION INFORMATION

Florida West Zone, NAD 1983(1990 Adjustment)  
 Northing(ft) 796236.18 Easting(ft) 693054.70  
 Latitude 26d31'27.11086" Longitude 81d53'13.86706"  
 Scale Factor 0.99994

EXISTING CERTIFIED CORNER RECORDS

Document No.	Date
<u>7241</u>	<u>5-29-80</u>
<u>36320</u>	<u>6-06-90</u>
<u>75310</u>	<u>5-08-02</u>

The above documents are based on FDEP Bureau of Surveying and Mapping Record Information.

I hereby certify the monument and accessories shown above were field located on 10-21-03.

*Scott C. Whitaker*  
 SCOTT C. WHITAKER  
 Professional Surveyor and Mapper  
 Florida Certificate No. 4324  
 Date Signed 2-23-04

BEAN, WHITAKER, LUTZ & KAREH, INC. (LB 4919)  
 13041 McGregor Boulevard  
 Fort Myers, Florida 33919-5910  
 Phone: (239) 481-1331

POINT NO. 6011

BLM REFERENCE NO. T45SR24E500200