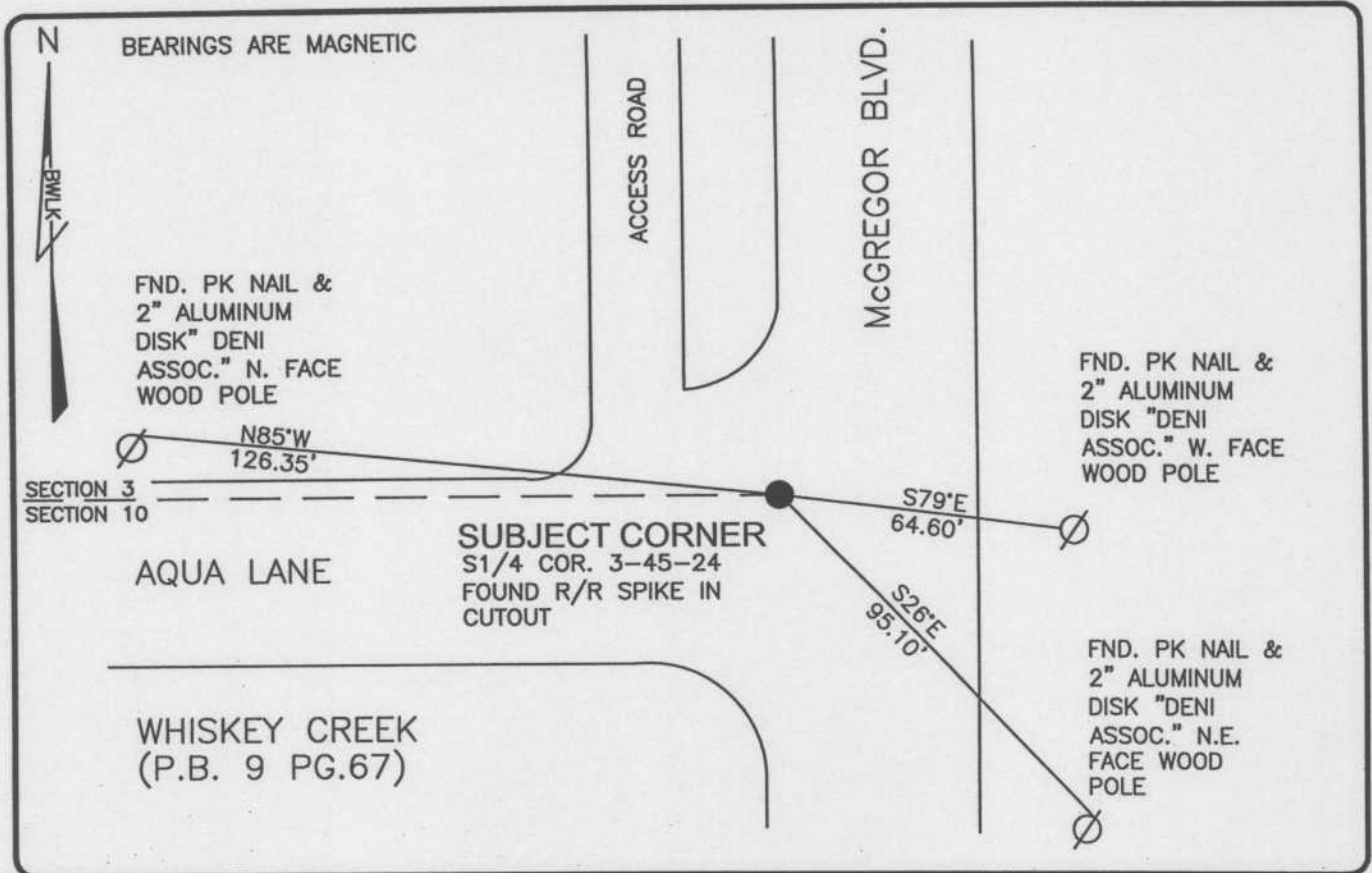


LAND CORNER RECORD

PUBLIC WORKS
LEE COUNTY, FLORIDA

Address - 1500 Monroe St., Ft. Myers, Fla. 33901

Phone : (239) 479-8900

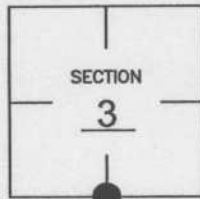


COMMENTS:

FOUND CORNER AND REFERENCES AS SHOWN IN C.C.R. 49273. FIELD VERIFIED CORNER MATCHES SUBDIVISION TIES TO WHISKEY CREEK (P.B.9 PG.67).

CORNER DESCRIPTION

S1/4 Corner
Section 3
Township 45
Range 24



HORIZONTAL POSITION INFORMATION

Florida West Zone, NAD 1983(1990 Adjustment)
 Northing(ft) 817376.76 Easting(ft) 690136.34
 Latitude 26°34'56.51468" Longitude 81°53'45.80902"
 Scale Factor 0.99994

EXISTING CERTIFIED CORNER RECORDS

Document No.	Date
<u>49273</u>	<u>7-22-94</u>

The above documents are based on FDEP Bureau of Surveying and Mapping Record Information.

I hereby certify the monument and accessories shown above were field located on 10-23-03.

Scott C. Whitaker
 SCOTT C. WHITAKER
 Professional Surveyor and Mapper
 Florida Certificate No. 4324
 Date Signed 4-07-04

BEAN, WHITAKER, LUTZ & KAREH, INC. (LB 4919)
 13041 McGregor Boulevard
 Fort Myers, Florida 33919-5910
 Phone: (239) 481-1331

POINT NO. 5007

BLM REFERENCE NO. T45SR24E440600