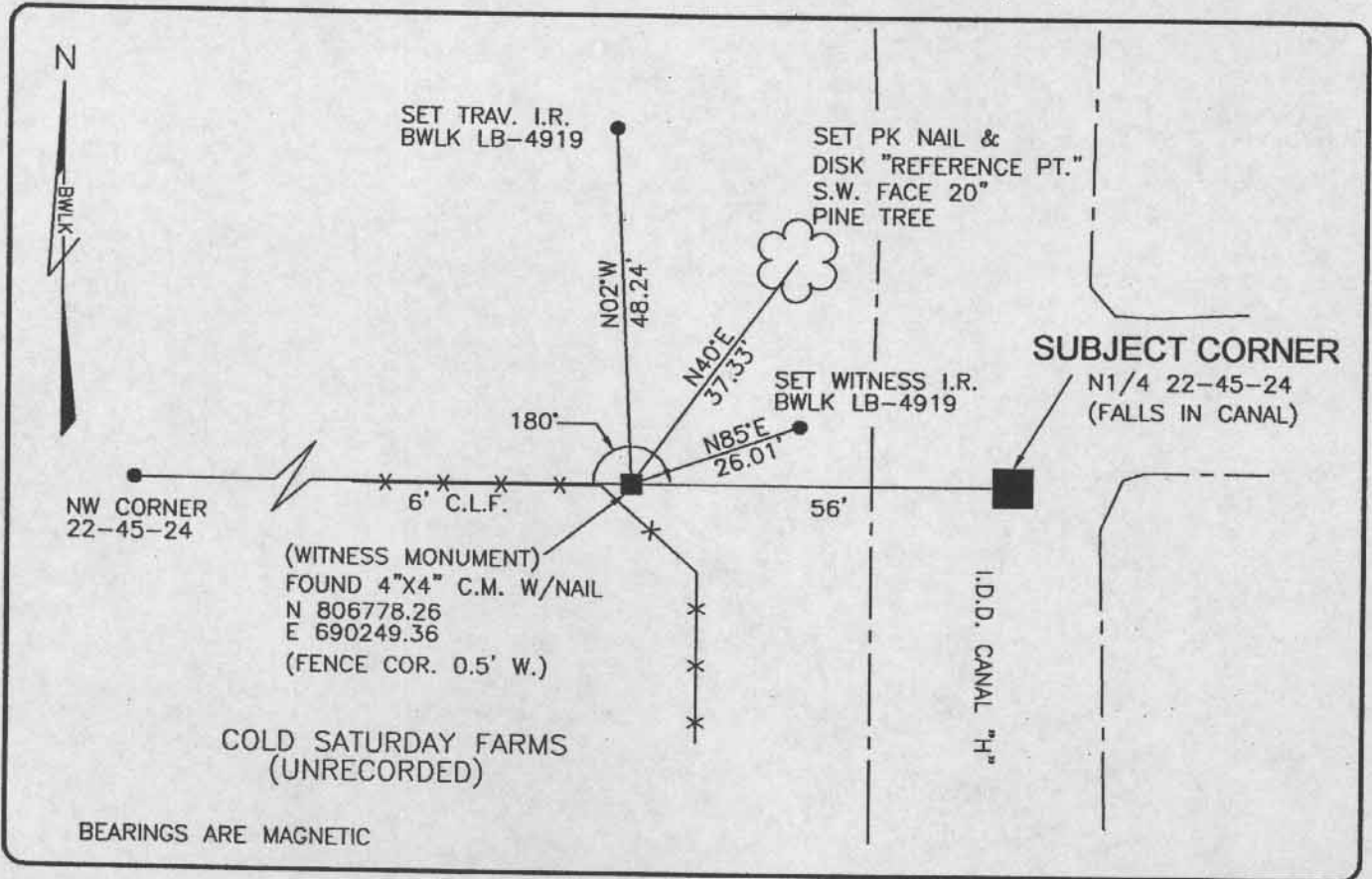


LAND CORNER RECORD

**PUBLIC WORKS
LEE COUNTY, FLORIDA**

Address - 1500 Monroe St., Ft. Myers, Fla. 33901

Phone : (239) 479-8900

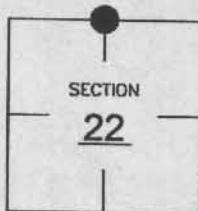


COMMENTS:

ESTABLISHED CORNER VALUES FROM UNRECORDED PLAT OF COLD SATURDAY FARMS. VERIFIED WITH HISTORICAL RECORDS.

CORNER DESCRIPTION

N1/4 Corner
 Section 22
 Township 45
 Range 24



HORIZONTAL POSITION INFORMATION

Florida West Zone, NAD 1983(1990 Adjustment)
 Northing(ft) 806779.21 Easting(ft) 690305.35
 Latitude 26°33'11.55383" Longitude 81°53'44.04254"
 Scale Factor 0.99994

EXISTING CERTIFIED CORNER RECORDS

Document No.	Date
NONE	NONE

The above documents are based on FDEP Bureau of Surveying and Mapping Record Information.

I hereby certify the monument and accessories shown above were field located on 10-27-03.

Scott C. Whitaker
 SCOTT C. WHITAKER
 Professional Surveyor and Mapper
 Florida Certificate No. 4324
 Date Signed 3-03-04

BEAN, WHITAKER, LUTZ & KAREH, INC. (LB 4919)
 13041 McGregor Boulevard
 Fort Myers, Florida 33919-5910
 Phone: (239) 481-1331

POINT NO. 6101

BLM REFERENCE NO. T45SR24E440400