

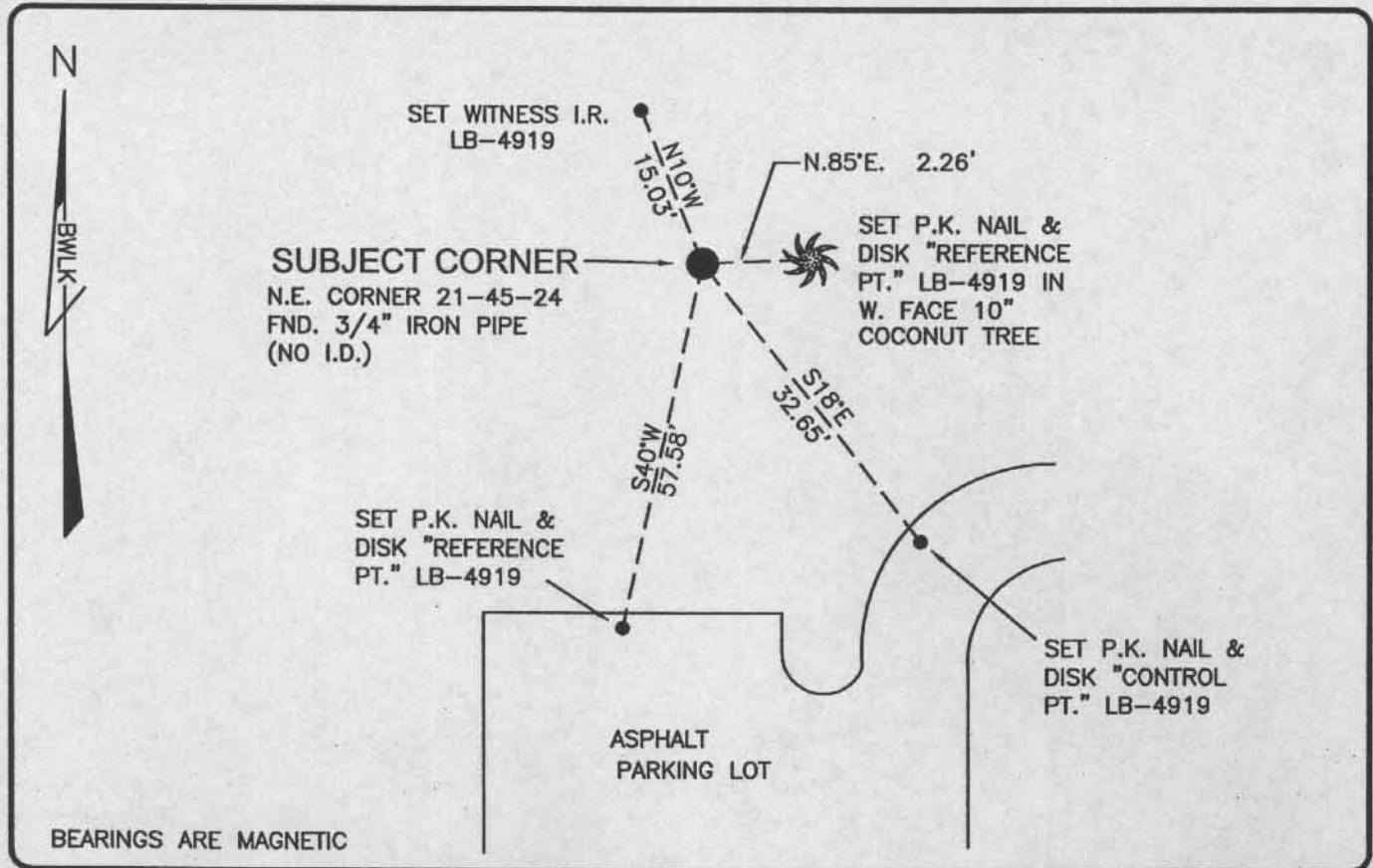
LAND CORNER RECORD

PUBLIC WORKS

LEE COUNTY, FLORIDA

Address - 1500 Monroe St., Ft. Myers, Fla. 33901

Phone : (239) 479-8900



COMMENTS:
GENERALLY ACCEPTED CORNER BY LOCAL SURVEYORS.
VERIFIED DIMENSIONS OF SECTION WITH HISTORICAL RECORDS.

CORNER DESCRIPTION

NE Corner	
Section	21
Township	45
Range	24

SECTION 21

HORIZONTAL POSITION INFORMATION

Florida West Zone, NAD 1983(1990 Adjustment)
 Northing(ft) 806,734.24 Easting(ft) 687,653.76
 Latitude 26°33'11.12894" Longitude 81°54'13.24394"
 Scale Factor 0.99994

EXISTING CERTIFIED CORNER RECORDS

Document No.	Date
NONE	NONE

The above documents are based on FDEP Bureau of Surveying and Mapping Record Information.

I hereby certify the monument and accessories shown above were field located on 11-04-03.

Scott C. Whitaker
 SCOTT C. WHITAKER
 Professional Surveyor and Mapper
 Florida Certificate No. 4324
 Date Signed 4-07-04

BEAN, WHITAKER, LUTZ & KAREH, INC. (LB 4919)
 13041 McGregor Boulevard
 Fort Myers, Florida 33919-5910
 Phone: (239) 481-1331

POINT NO. 6022

BLM REFERENCE NO. T45SR24E400400