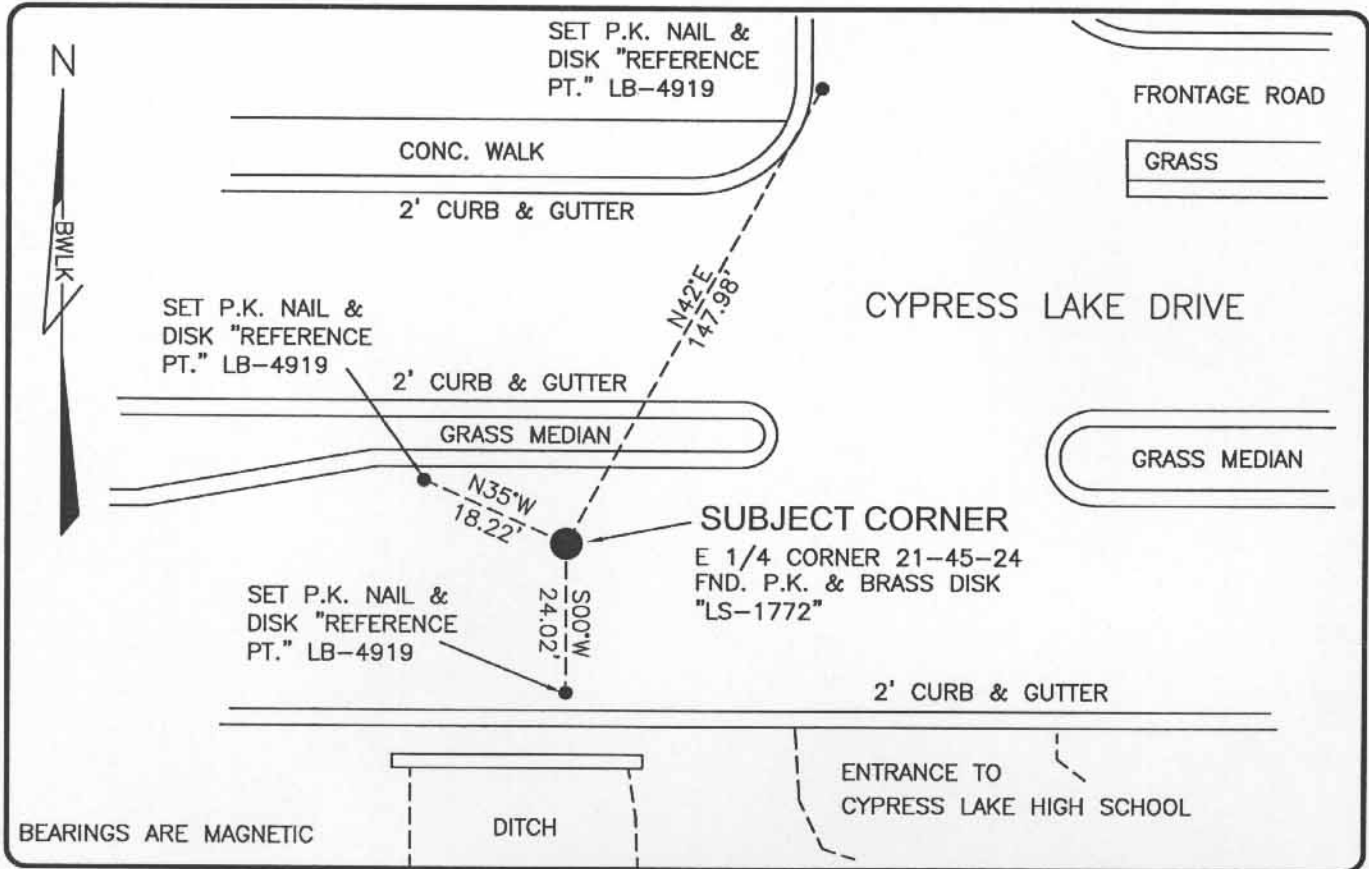


LAND CORNER RECORD

PUBLIC WORKS
LEE COUNTY, FLORIDA

Address - 1500 Monroe St., Ft. Myers, Fla. 33901

Phone : (239) 479-8900



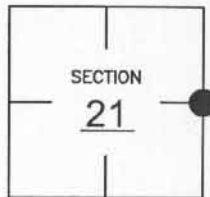
BEARINGS ARE MAGNETIC

COMMENTS:

GENERALLY ACCEPTED CORNER BY LOCAL SURVEYORS.
CORNER IS IN HARMONY WITH HISTORICAL RECORDS.

CORNER DESCRIPTION

E1/4 Corner
Section 21
Township 45
Range 24



HORIZONTAL POSITION INFORMATION

Florida West Zone, NAD 1983(1990 Adjustment)

Northing(ft) 804091.80 Easting(ft) 687600.90

Latitude 26°32'44.95830" Longitude 81°54'13.84790"

Scale Factor 0.99994

EXISTING CERTIFIED CORNER RECORDS

Document No.	Date
<u>31616</u>	<u>1-25-89</u>
<u>22628</u>	<u>1-27-86</u>

The above documents are based on FDEP Bureau of Surveying and Mapping Record Information.

I hereby certify the monument and accessories shown above were field located on 10-21-03.

Scott C. Whitaker
 SCOTT C. WHITAKER
 Professional Surveyor and Mapper
 Florida Certificate No. 4324
 Date Signed 5-07-04

BEAN, WHITAKER, LUTZ & KAREH, INC. (LB 4919)
 13041 McGregor Boulevard
 Fort Myers, Florida 33919-5910
 Phone: (239) 481-1331

POINT NO. 5144

BLM REFERENCE NO. T45SR24E400340