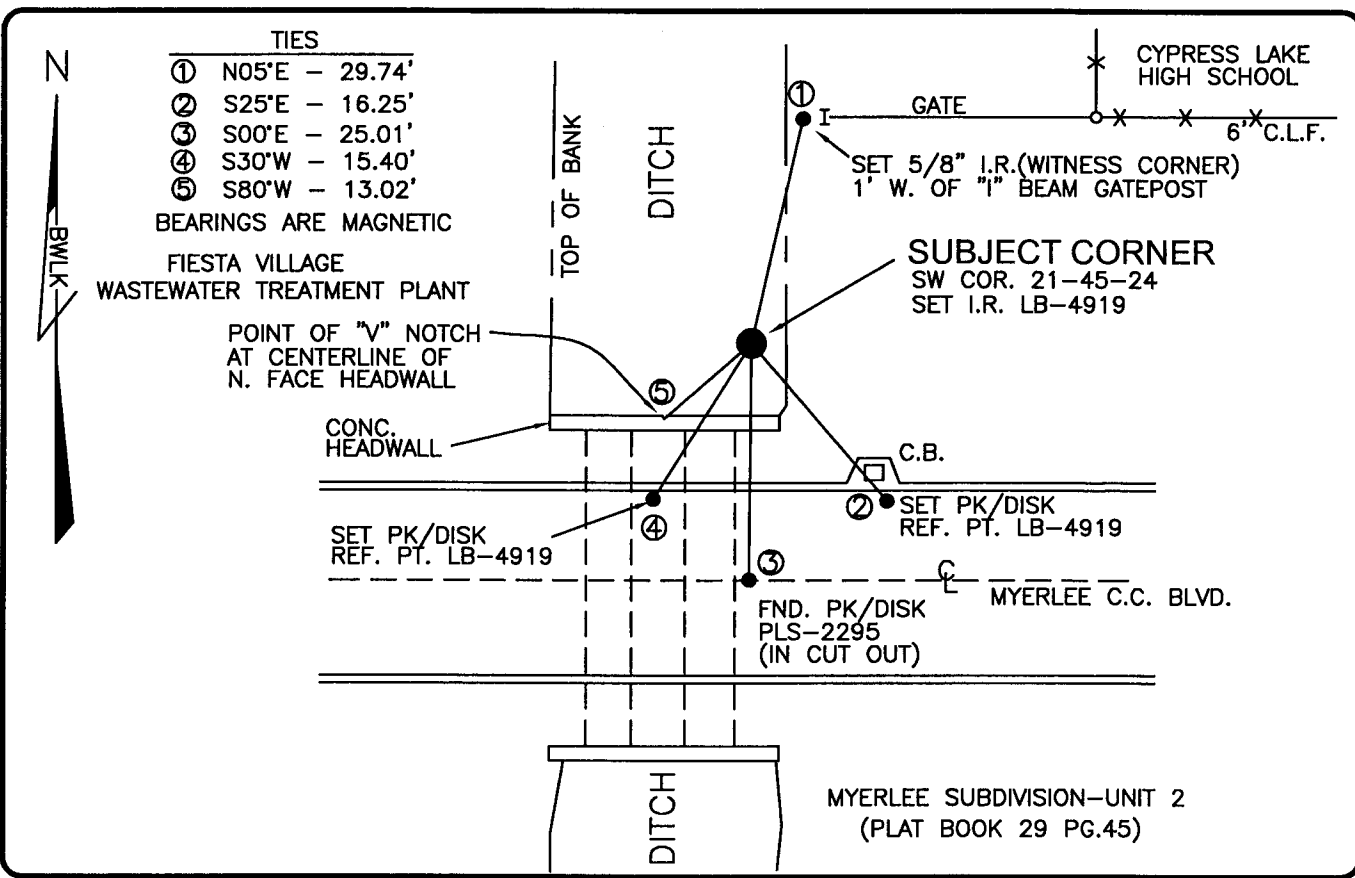


PUBLIC WORKS
LEE COUNTY, FLORIDA

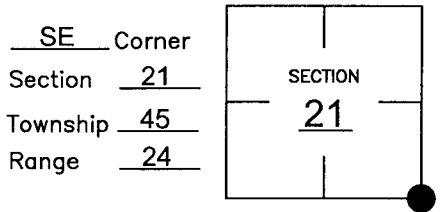
Address - 1500 Monroe St., Ft. Myers, Fla. 33901

Phone : (239) 479-8900



COMMENTS:
RESET CORNER BASED ON TIES SHOWN ON RECORDED PLAT
OF MYERLEE SUBDIVISION-UNIT 2 (PLAT BOOK 29 PG.45).
CALCULATED CORNER IN HARMONY WITH HISTORICAL
RECORDS.

CORNER DESCRIPTION



HORIZONTAL POSITION INFORMATION

Florida West Zone, NAD 1983(1990 Adjustment)

Northing(ft) 801445.70 Easting(ft) 687653.50

Latitude 26°32'18.75042" Longitude 81°54'13.29051"

Scale Factor 0.99994

EXISTING CERTIFIED CORNER RECORDS

Document No.	Date
NONE	

The above documents are based on FDEP Bureau
of Surveying and Mapping Record Information.

I hereby certify the monument and accessories
shown above were field located on 2-27-04.

Scott C. Whitaker

SCOTT C. WHITAKER
Professional Surveyor and Mapper
Florida Certificate No. 4324
Date Signed 3-03-04

BEAN, WHITAKER, LUTZ & KAREH, INC. (LB 4919)
13041 McGregor Boulevard
Fort Myers, Florida 33919-5910
Phone: (239) 481-1331

POINT NO. 6091

BLM REFERENCE NO. T45SR24E400300