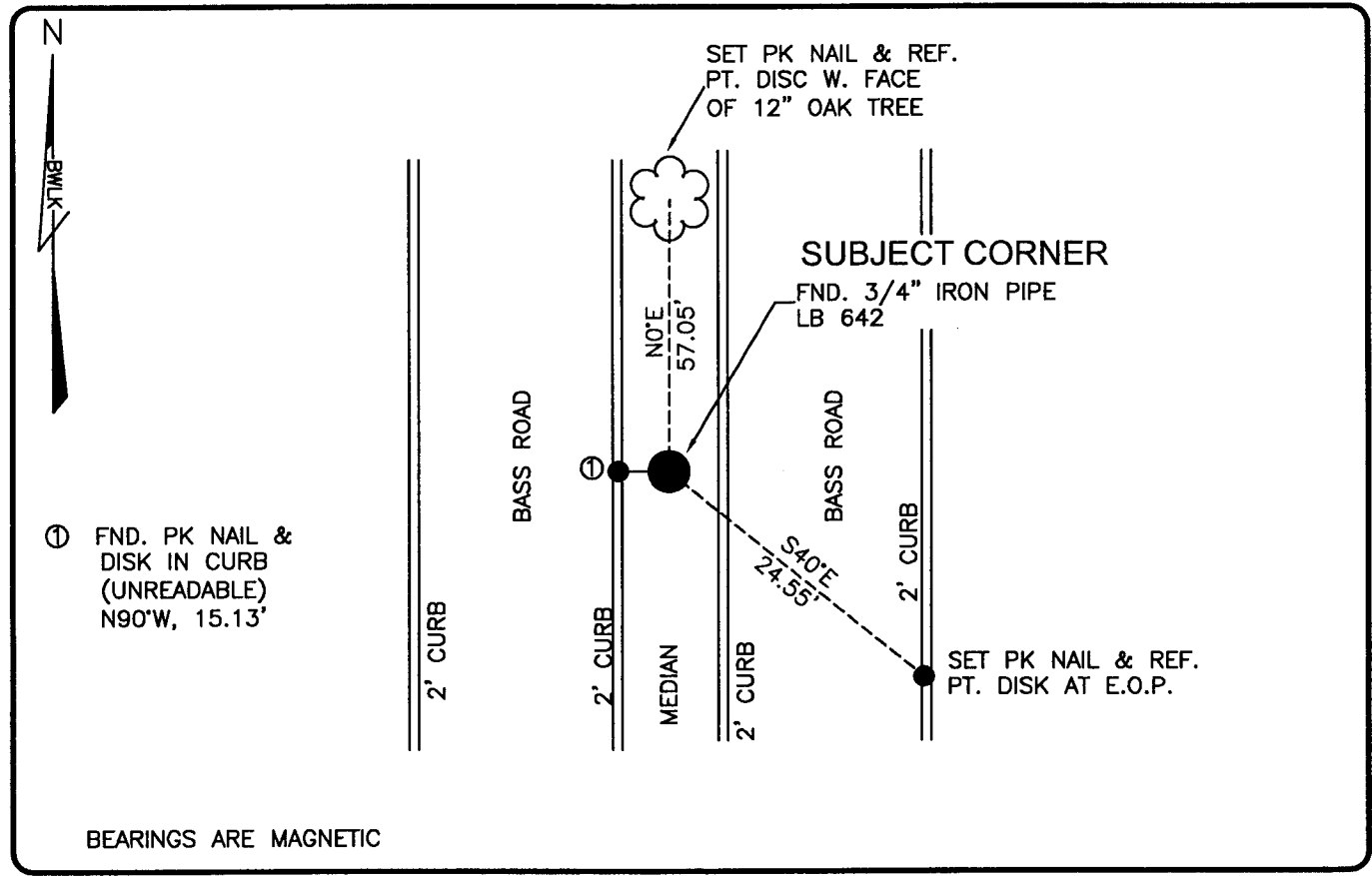


PUBLIC WORKS  
LEE COUNTY, FLORIDA

Address - 1500 Monroe St., Ft. Myers, Fla. 33901

Phone : (239) 479-8900

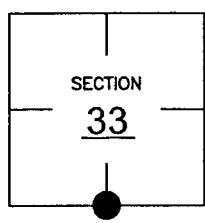


BEARINGS ARE MAGNETIC

COMMENTS:  
GENERALLY ACCEPTED CORNER BY LOCAL SURVEYORS.  
VALUES PUBLISHED IN CCR 75318 WERE VERIFIED AND HELD.

CORNER DESCRIPTION

S 1/4 Corner  
Section 33  
Township 45  
Range 24



HORIZONTAL POSITION INFORMATION

Florida West Zone, NAD 1983(1990 Adjustment)  
Northing(ft) 790855.50 Easting(ft) 685190.25  
Latitude 26d30'33.88071" Longitude 81d54'40.49461"  
Scale Factor 0.99994

EXISTING CERTIFIED CORNER RECORDS

| Document No. | Date            |
|--------------|-----------------|
| <u>21811</u> | <u>7-09-85</u>  |
| <u>34171</u> | <u>12-26-89</u> |
| <u>36309</u> | <u>6-06-90</u>  |
| <u>75318</u> | <u>5-08-02</u>  |

The above documents are based on FDEP Bureau of Surveying and Mapping Record Information.

I hereby certify the monument and accessories shown above were field located on 11-17-03

*Scott C. Whitaker*  
SCOTT C. WHITAKER  
Professional Surveyor and Mapper  
Florida Certificate No. 4324  
Date Signed 1-29-04

BEAN, WHITAKER, LUTZ & KAREH, INC. (LB 4919)  
13041 McGregor Boulevard  
Fort Myers, Florida 33919-5910  
Phone: (239) 481-1331

POINT NO. 6044

BLM REFERENCE NO. T45SR24E340100