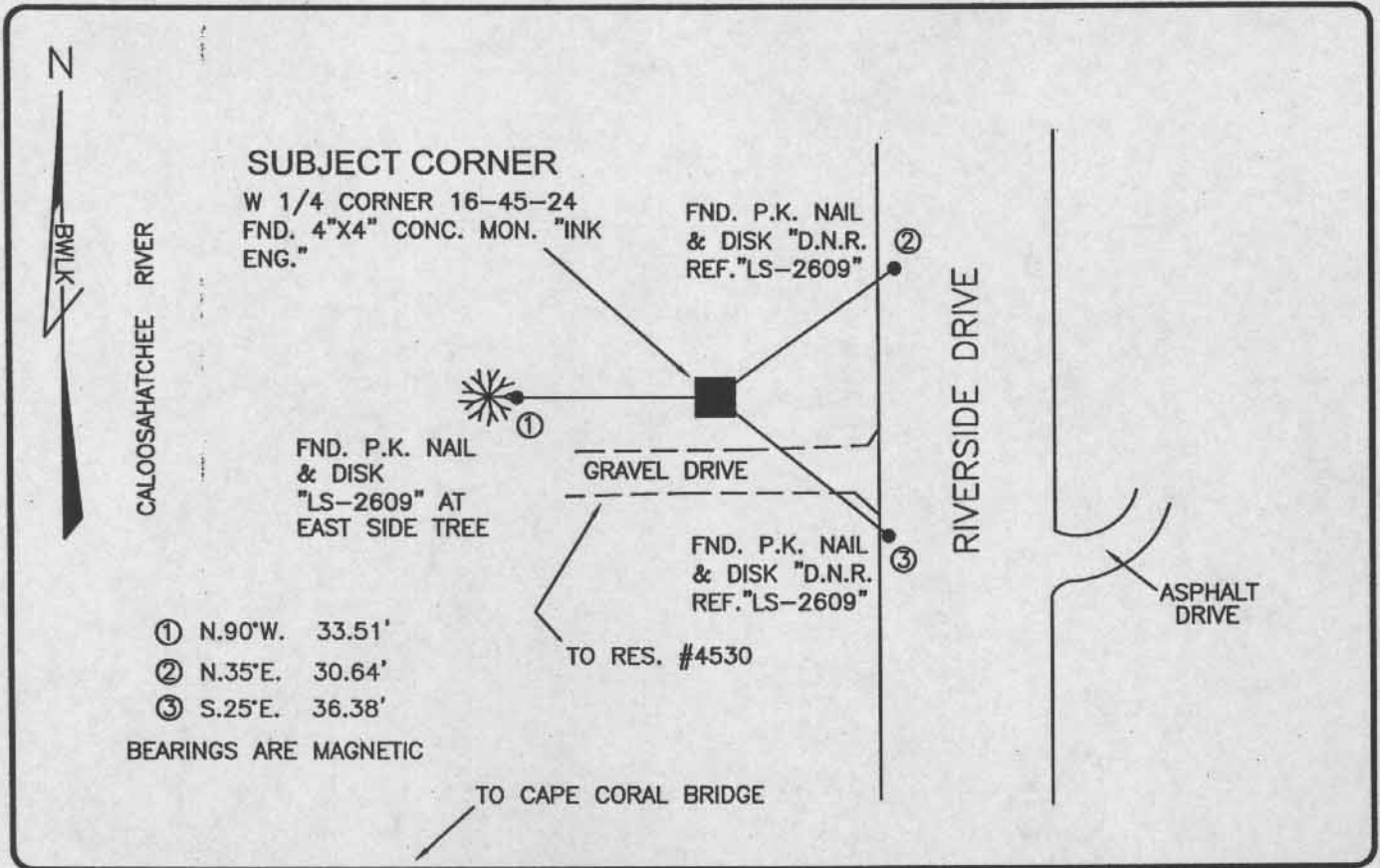


LAND CORNER RECORD

PUBLIC WORKS  
LEE COUNTY, FLORIDA

Address - 1500 Monroe St., Ft. Myers, Fla. 33901

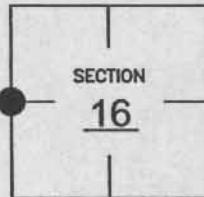
Phone : (239) 479-8900



COMMENTS:  
CORNER AND REFERENCES RECOVERED AS SHOWN ON CCR 18384.

CORNER DESCRIPTION

W1/4 Corner  
Section 16  
Township 45  
Range 24



HORIZONTAL POSITION INFORMATION

Florida West Zone, NAD 1983(1990 Adjustment)  
 Northing(ft) 809285.43 Easting(ft) 682310.87  
 Latitude 26°33'36.43276" Longitude 81°55'12.06559"  
 Scale Factor 0.99994

EXISTING CERTIFIED CORNER RECORDS

Document No.	Date
<u>18384</u>	<u>2-29-84</u>

The above documents are based on FDEP Bureau of Surveying and Mapping Record Information.

I hereby certify the monument and accessories shown above were field located on 10-24-03.

*Scott C. Whitaker*  
 SCOTT C. WHITAKER  
 Professional Surveyor and Mapper  
 Florida Certificate No. 4324  
 Date Signed 4-07-04

BEAN, WHITAKER, LUTZ & KAREH, INC. (LB 4919)  
 13041 McGregor Boulevard  
 Fort Myers, Florida 33919-5910  
 Phone: (239) 481-1331

POINT NO. 6019

BLM REFERENCE NO. T45SR24E300440