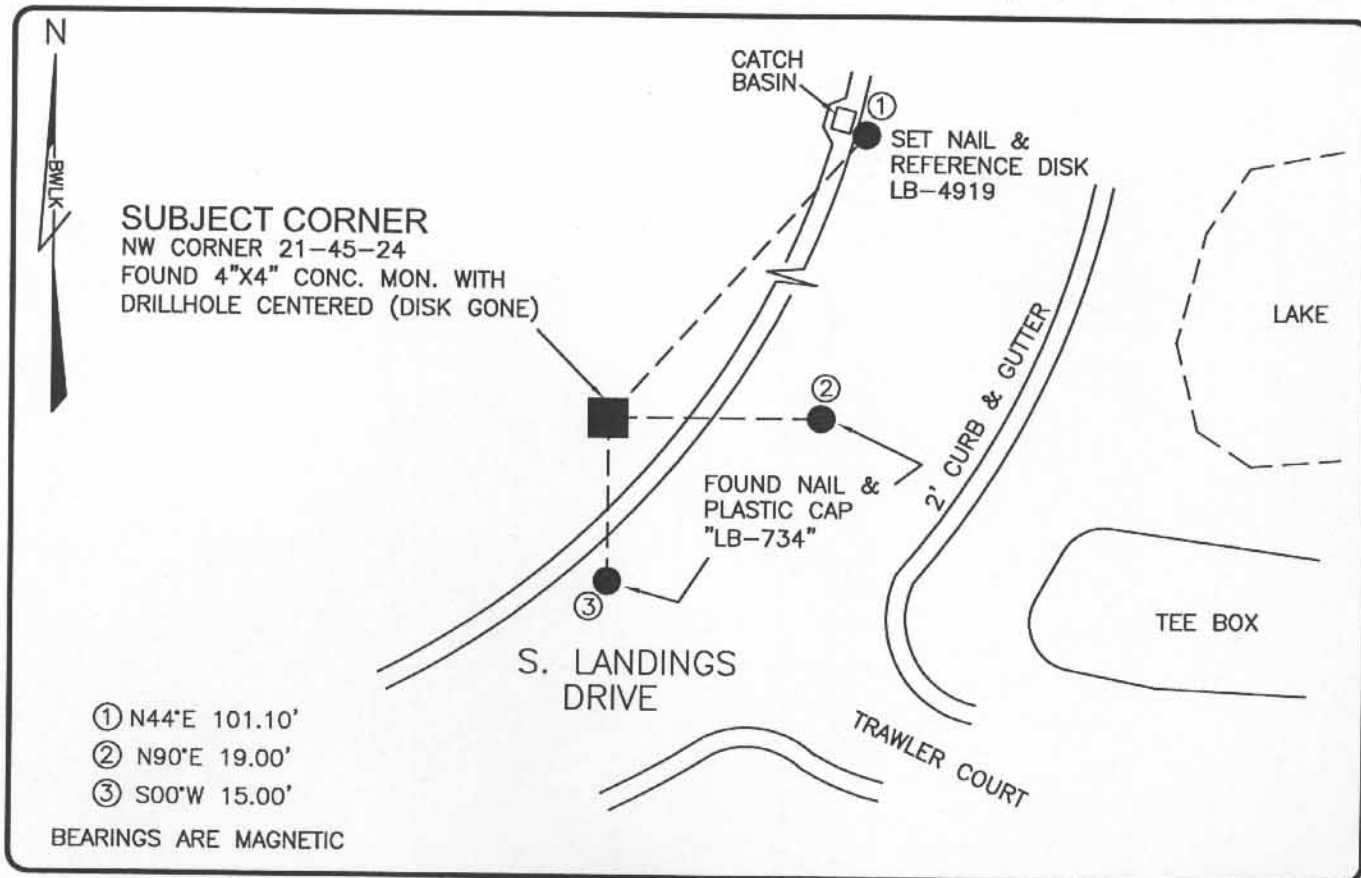


LAND CORNER RECORD

PUBLIC WORKS
LEE COUNTY, FLORIDA

Address - 1500 Monroe St., Ft. Myers, Fla. 33901

Phone : (239) 479-8900

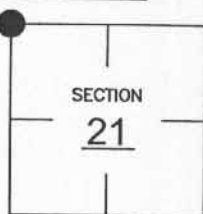


COMMENTS:

RECOVERED CORNER AND TWO REFERENCES AS SHOWN ON CCR 24252. CORNER IS IN HARMONY WITH HISTORICAL RECORDS.

CORNER DESCRIPTION

NW Corner
Section 21
Township 45
Range 24



HORIZONTAL POSITION INFORMATION

Florida West Zone, NAD 1983(1990 Adjustment)
 Northing(ft) 806665.29 Easting(ft) 682356.46
 Latitude 26°33'10.48225" Longitude 81°55'11.58161"
 Scale Factor 0.99994

EXISTING CERTIFIED CORNER RECORDS

Document No.	Date
<u>24252</u>	<u>10-15-86</u>
<u>31611</u>	<u>1-25-89</u>
<u>34261</u>	<u>12-18-89</u>

The above documents are based on FDEP Bureau of Surveying and Mapping Record Information.

I hereby certify the monument and accessories shown above were field located on 10-21-03.

Scott C. Whitaker
 SCOTT C. WHITAKER
 Professional Surveyor and Mapper
 Florida Certificate No. 4324
 Date Signed 5-07-04

BEAN, WHITAKER, LUTZ & KAREH, INC. (LB 4919)
 13041 McGregor Boulevard
 Fort Myers, Florida 33919-5910
 Phone: (239) 481-1331

POINT NO. 5114

BLM REFERENCE NO. T45SR24E300400