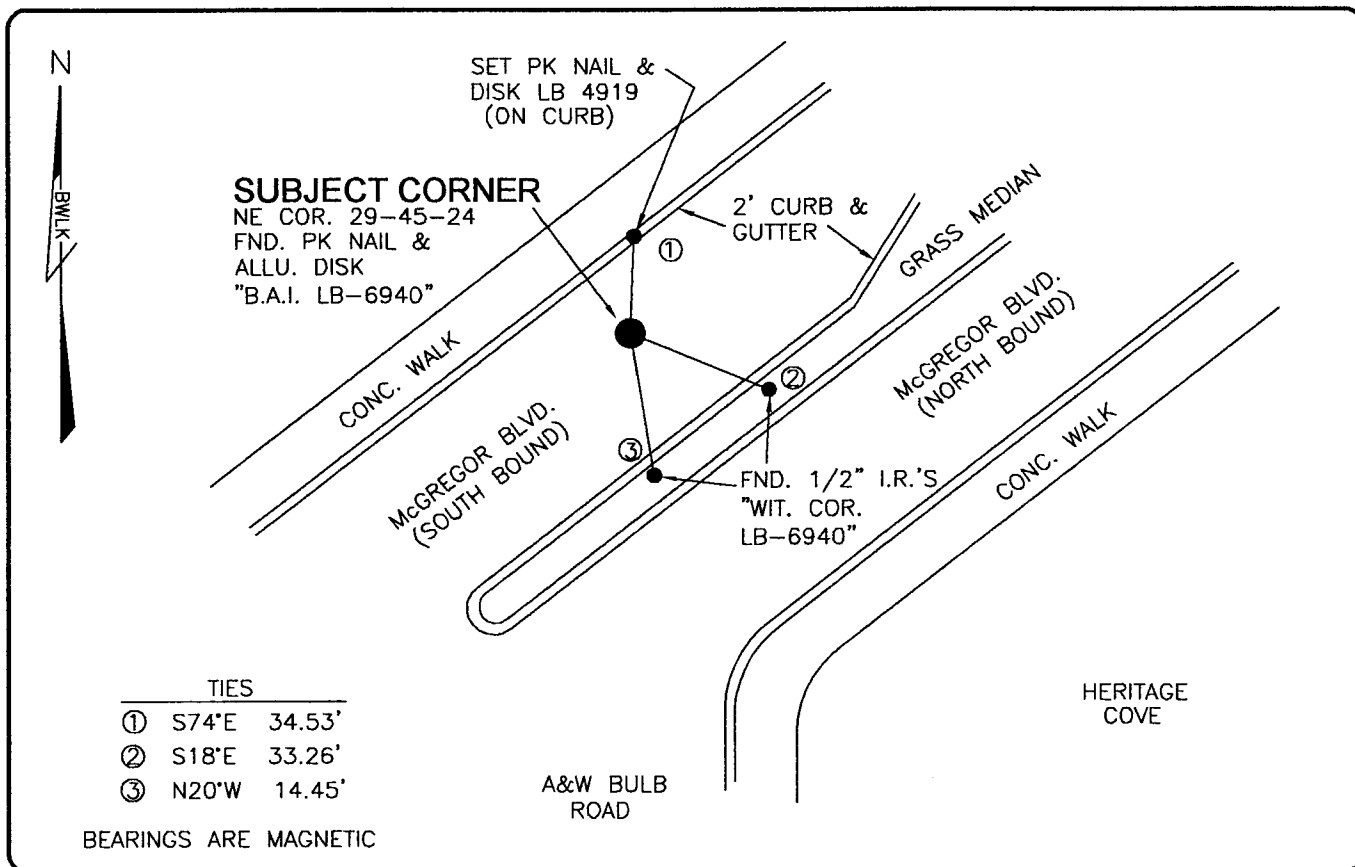


**PUBLIC WORKS
LEE COUNTY, FLORIDA**

Address - 1500 Monroe St., Ft. Myers, Fla. 33901

Phone : (239) 479-8900



TIES

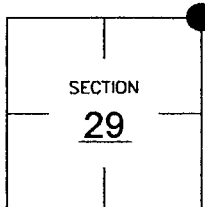
①	S74°E	34.53'
②	S18°E	33.26'
③	N20°W	14.45'

BEARINGS ARE MAGNETIC

COMMENTS:
GENERALLY ACCEPTED CORNER BY LOCAL SURVEYORS.
CURRENT POSITION IS IN HARMONY WITH HISTORICAL RECORDS.

CORNER DESCRIPTION

NE Corner
Section 29
Township 45
Range 24



HORIZONTAL POSITION INFORMATION

Florida West Zone, NAD 1983(1990 Adjustment)
 Northing(ft) 801343.14 Easting(ft) 682346.24
 Latitude 26d32'17.77082" Longitude 81d55'11.73076"
 Scale Factor 0.99994

EXISTING CERTIFIED CORNER RECORDS

Document No.	Date
<u>31614</u>	<u>1-25-89</u>
<u>UNRECORDED</u>	<u>12-15-03</u>

The above documents are based on FDEP Bureau of Surveying and Mapping Record Information.

I hereby certify the monument and accessories shown above were field located on 2-19-04.

Scott C. Whitaker
 SCOTT C. WHITAKER
 Professional Surveyor and Mapper
 Florida Certificate No. 4324
 Date Signed 3-03-04

BEAN, WHITAKER, LUTZ & KAREH, INC. (LB 4919)
 13041 McGregor Boulevard
 Fort Myers, Florida 33919-5910
 Phone: (239) 481-1331

POINT NO. 6094

BLM REFERENCE NO. T45SR24E300300