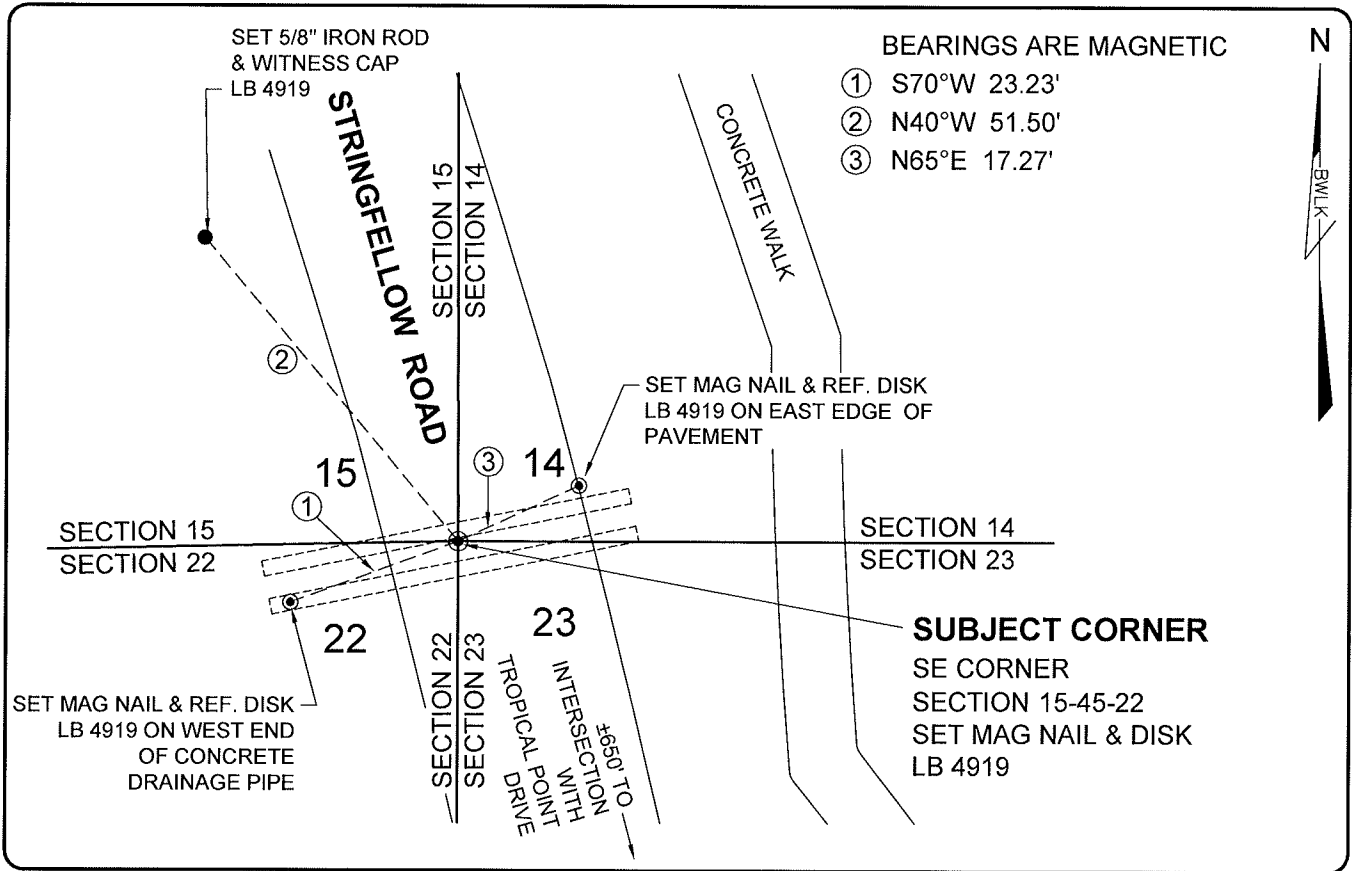


LAND CORNER RECORD

**PUBLIC WORKS
LEE COUNTY, FLORIDA**

Address - 1500 Monroe St., Ft. Myers, Fla. 33901

Phone : (239) 479-8900

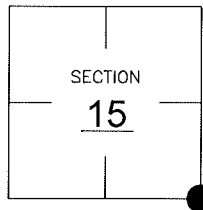


COMMENTS:

RESET CORNER BASED ON OLD SURVEY NOTES FROM 1990. NO REFERENCES WERE FOUND ACCORDING WITH CCR# 35236

CORNER DESCRIPTION

SE Corner
Section 15
Township 45
Range 22



HORIZONTAL POSITION INFORMATION

Florida West Zone, NAD 1983(1990 Adjustment)
 Northing(ft) 804992.09 Easting(ft) 626344.21
 Latitude 26°32'53.88649" Longitude 82°05'28.41043"
 Scale Factor 0.99994

EXISTING CERTIFIED CORNER RECORDS

Document No.	Date
<u>35236</u>	<u>04-17-90</u>

The above documents are based on FDEP Bureau of Surveying and Mapping Record Information.

I hereby certify the monument and accessories shown above were field located on 03-01-05

Scott C. Whitaker

SCOTT C. WHITAKER
 Professional Surveyor and Mapper
 Florida Certificate No. 4324
 Date Signed 08-30-05

BEAN, WHITAKER, LUTZ & KAREH, INC. (LB 4919)
 13041 McGregor Boulevard
 Fort Myers, Florida 33919-5910
 Phone: (239) 481-1331

POINT NO. 11635

BLM REFERENCE NO. T45SR22E500400