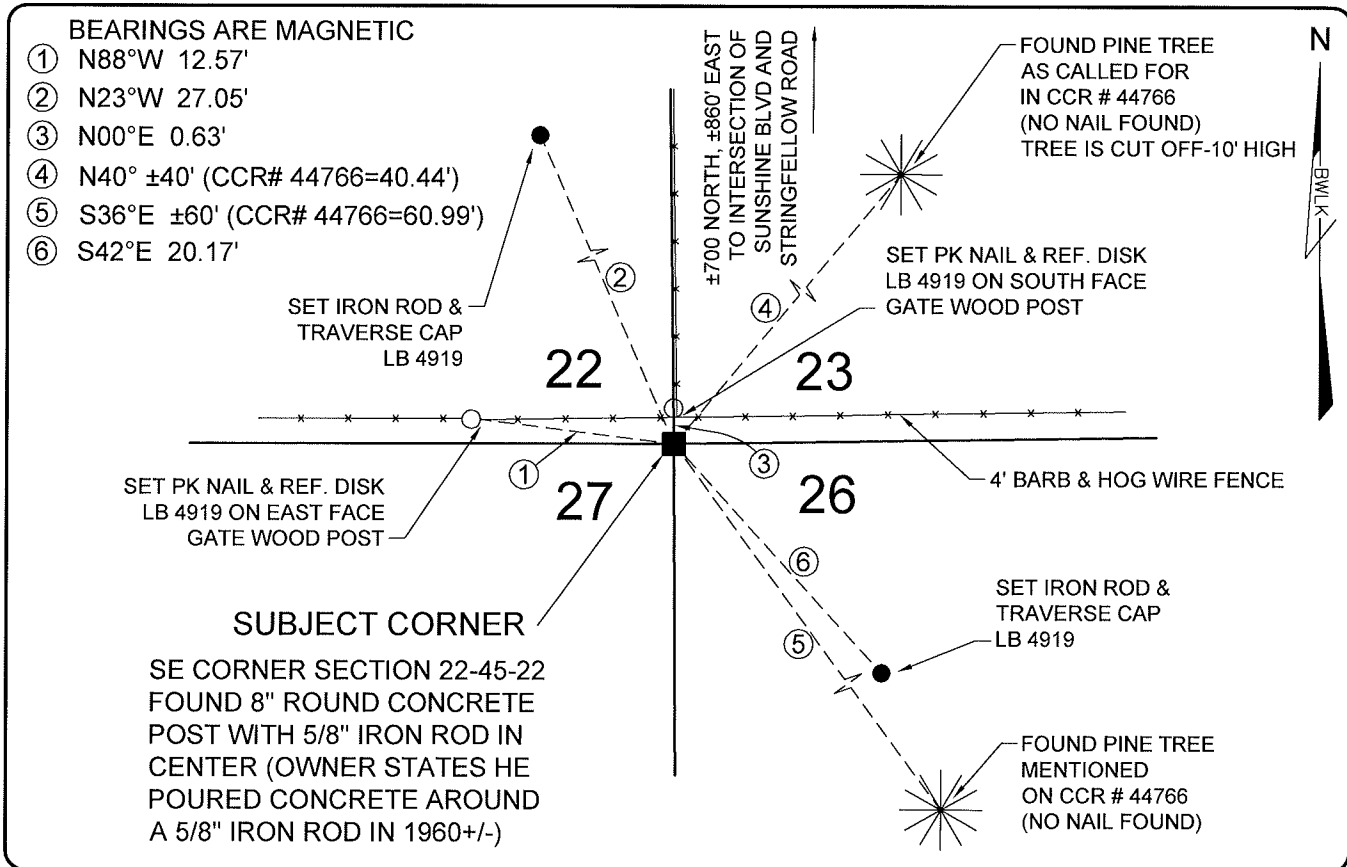


LAND CORNER RECORD

**PUBLIC WORKS
LEE COUNTY, FLORIDA**

Address -- 1500 Monroe St., Ft. Myers, Fla. 33901

Phone : (239) 479-8900

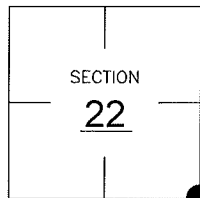


COMMENTS:

FOUND 8" CONCRETE POST WITH 5/8" IRON ROD IN CENTER AND TWO (2) PINE TREE REFERENCES AS CALLED FOR IN CCR #44766 (NO NAILS WERE FOUND IN THE REFERENCE TREES). THERE APPEARS TO BE AN ERROR (6'+/-) IN THE PUBLISHED COORDINATE VALUES SHOWN IN CCR #44766. THE CORNER WAS LOCATED USING GPS CONTROL POINT 9057 (SAME AS THE CCR) THE MONUMENT FOUND HAS BEEN IN THE SAME LOCATION SINCE 1960 PER VERBAL STATEMENT BY THE ADJOINING LAND OWNER IN THE NORTHEAST QUADRANT.

CORNER DESCRIPTION

SE Corner
Section 22
Township 45
Range 22



HORIZONTAL POSITION INFORMATION

Florida West Zone, NAD 1983(1990 Adjustment)

Northing(ft) 799341.65 Easting(ft) 626437.87

Latitude 26°31'57.92427" Longitude 82°05'27.33494"

Scale Factor 0.99994

EXISTING CERTIFIED CORNER RECORDS

Document No.	Date
<u>44766</u>	<u>1-15-93</u>
<u>45380</u>	<u>4-19-93</u>

The above documents are based on FDEP Bureau of Surveying and Mapping Record Information.

I hereby certify the monument and accessories shown above were field located on 08-19-05.

Scott C. Whitaker
SCOTT C. WHITAKER
Professional Surveyor and Mapper
Florida Certificate No. 4324
Date Signed 08-19-05

BEAN, WHITAKER, LUTZ & KAREH, INC. (LB 4919)
13041 McGregor Boulevard
Fort Myers, Florida 33919-5910
Phone: (239) 481-1331

POINT NO. 11642

BLM REFERENCE NO. T45SR22E500300