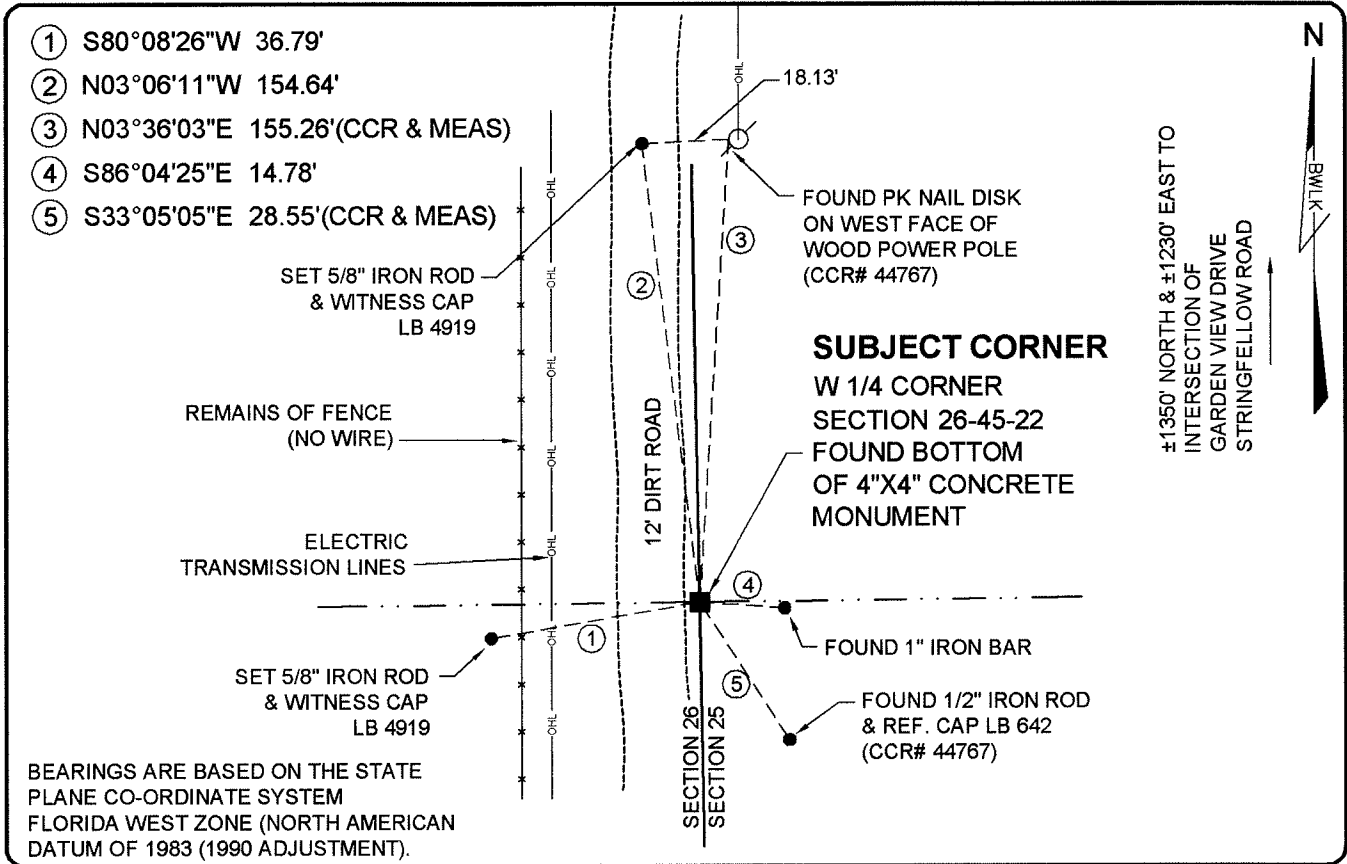


**LAND CORNER RECORD**

**PUBLIC WORKS  
LEE COUNTY, FLORIDA**

Address - 1500 Monroe St., Ft. Myers, Fla. 33901

Phone : (239) 479-8900

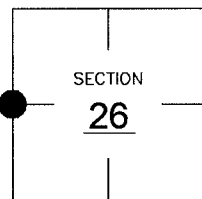


**COMMENTS:**

FOUND BOTTOM OF CONCRETE MONUMENT AND TWO (2) REFERENCES AS CALLED FOR IN CCR #44767. THERE APPEARS TO BE AN ERROR IN THE PUBLISHED COORDINATE VALUES SHOWN IN CCR #44766 (ACTUAL CORNER FALLS 2.29' NORTH AND 1.93' EAST FROM THE PUBLISHED VALUES). THE CORNER WAS LOCATED USING GPS CONTROL POINT 9057 (SAME AS THE CCR).

**CORNER DESCRIPTION**

W 1/4 Corner  
 Section 26  
 Township 45  
 Range 22



**HORIZONTAL POSITION INFORMATION**

Florida West Zone, NAD 1983(1990 Adjustment)

Northing(ft) 796683.52 Easting(ft) 626459.61

Latitude 26°31'31.59784" N Longitude 82°05'27.07484" W

Scale Factor 0.99994

**EXISTING CERTIFIED CORNER RECORDS**

Document No.	Date
<u>44767</u>	<u>12-11-92</u>

The above documents are based on FDEP Bureau of Surveying and Mapping Record Information.

I hereby certify the monument and accessories shown above were field located on 6-30-07.

*Scott C. Whitaker*  
**SCOTT C. WHITAKER**  
 Professional Surveyor and Mapper  
 Florida Certificate No. 4324  
 Date Signed 9-14-07

BEAN, WHITAKER, LUTZ & KAREH, INC. (LB 4919)  
 13041 McGregor Boulevard  
 Fort Myers, Florida 33919-5910  
 Phone: (239) 481-1331

POINT NO. 11656

BLM REFERENCE NO. T45SR22E500240