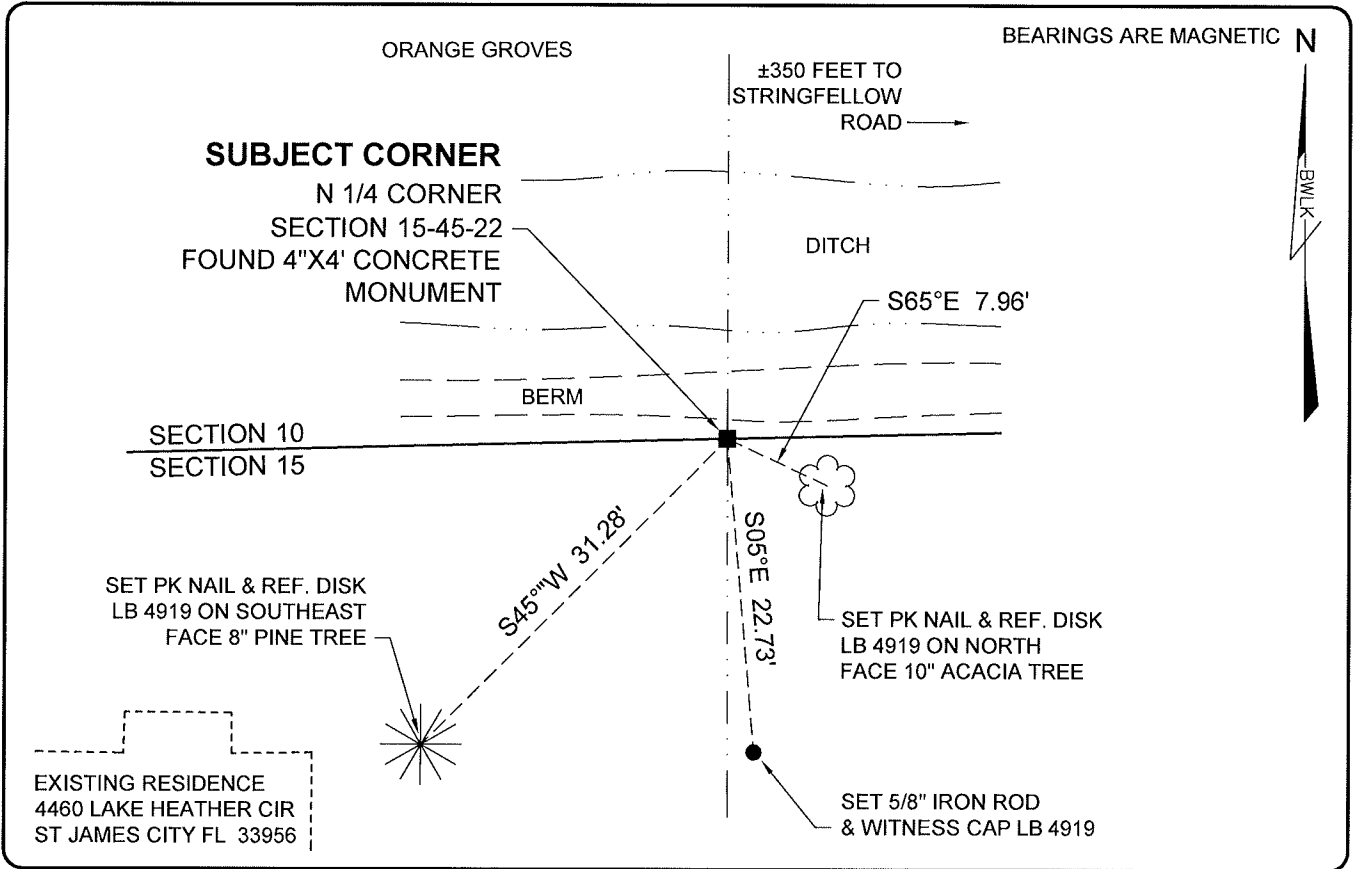


LAND CORNER RECORD

**PUBLIC WORKS
LEE COUNTY, FLORIDA**

Address - 1500 Monroe St., Ft. Myers, Fla. 33901

Phone : (239) 479-8900

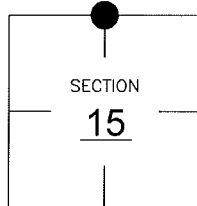


COMMENTS:

FOUND 4"X4" CONCRETE MONUMENT, NO REFERENCES WERE FOUND ACCORDING WITH CCR# 35234. VERIFIED MONUMENT WITH HISTORICAL RECORDS.

CORNER DESCRIPTION

N 1/4 Corner
Section 15
Township 45
Range 22



HORIZONTAL POSITION INFORMATION

Florida West Zone, NAD 1983(1990 Adjustment)

Northing(ft) 810208.70 Easting(ft) 623712.73

Latitude 26°33'45.53323" Longitude 82°05'57.43324"

Scale Factor 0.99994

EXISTING CERTIFIED CORNER RECORDS

Document No.	Date
<u>35234</u>	<u>04-17-90</u>

The above documents are based on FDEP Bureau of Surveying and Mapping Record Information.

I hereby certify the monument and accessories shown above were field located on 03-01-05.

Scott C. Whitaker
SCOTT C. WHITAKER
Professional Surveyor and Mapper
Florida Certificate No. 4324
Date Signed 08-30-05

BEAN, WHITAKER, LUTZ & KAREH, INC. (LB 4919)
13041 McGregor Boulevard
Fort Myers, Florida 33919-5910
Phone: (239) 481-1331

POINT NO. 11632

BLM REFERENCE NO. T45SR22E440500