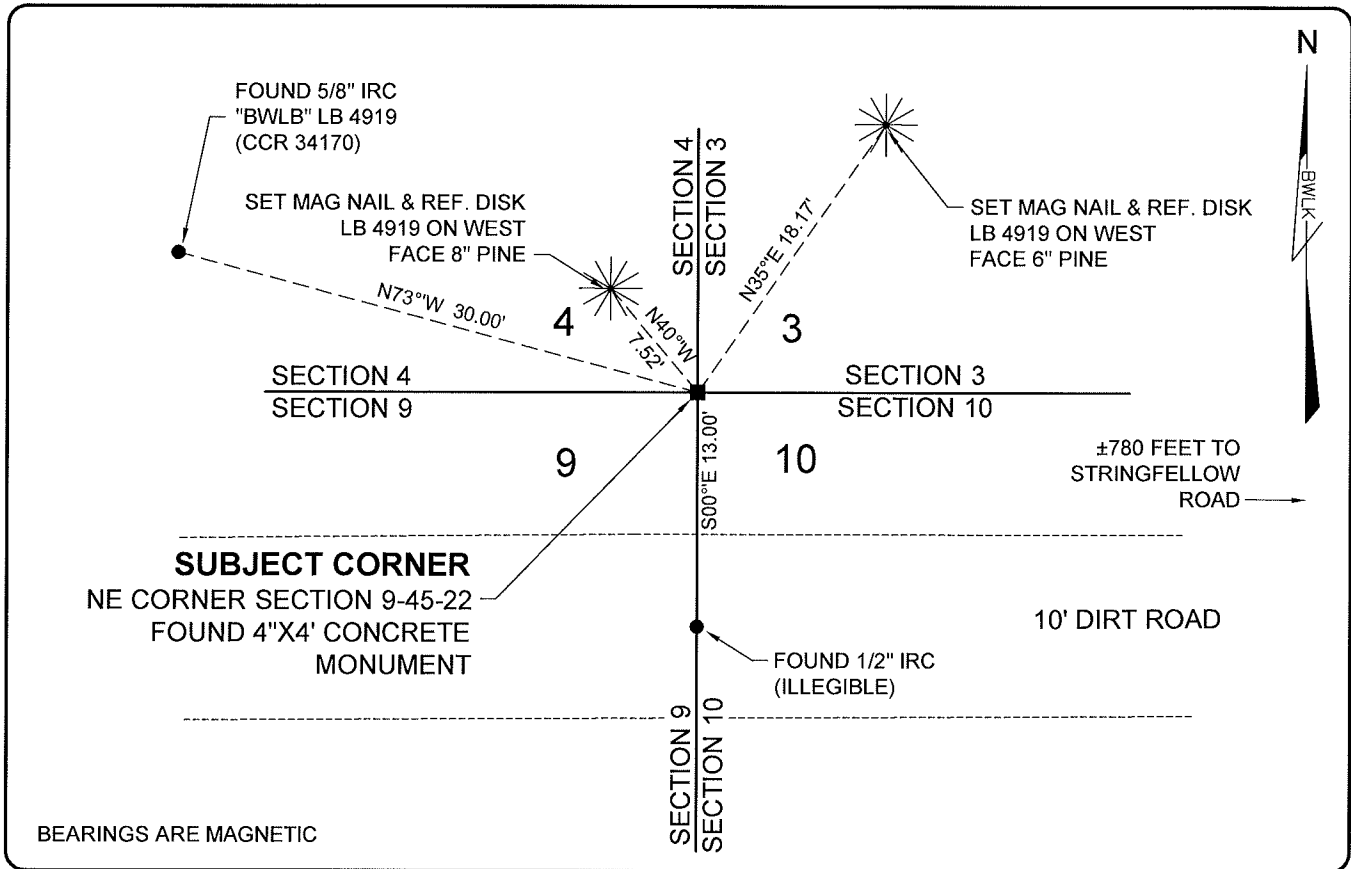


LAND CORNER RECORD

**PUBLIC WORKS
LEE COUNTY, FLORIDA**

Address - 1500 Monroe St., Ft. Myers, Fla. 33901

Phone : (239) 479-8900

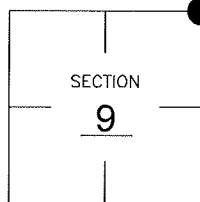


COMMENTS:

FOUND 4"x4" CONCRETE MONUMENT AND ONE (1) REFERENCE PER CCR #34170. CONFIRMED WITH SURVEY PERFORMED IN 1989.

CORNER DESCRIPTION

NE Corner
Section 9
Township 45
Range 22



HORIZONTAL POSITION INFORMATION

Florida West Zone, NAD 1983(1990 Adjustment)
 Northing(ft) 815475.11 Easting(ft) 620602.41
 Latitude 26°34'37.66738" Longitude 82°06'31.73815"
 Scale Factor 0.99994

EXISTING CERTIFIED CORNER RECORDS

Document No.	Date
<u>34170</u>	<u>11-28-89</u>

The above documents are based on FDEP Bureau of Surveying and Mapping Record Information.

I hereby certify the monument and accessories shown above were field located on 08-15-05.

Scott C. Whitaker
SCOTT C. WHITAKER
 Professional Surveyor and Mapper
 Florida Certificate No. 4324
 Date Signed 08-30-05

BEAN, WHITAKER, LUTZ & KAREH, INC. (LB 4919)
 13041 McGregor Boulevard
 Fort Myers, Florida 33919-5910
 Phone: (239) 481-1331

POINT NO. 11631

BLM REFERENCE NO. T45SR22E400600