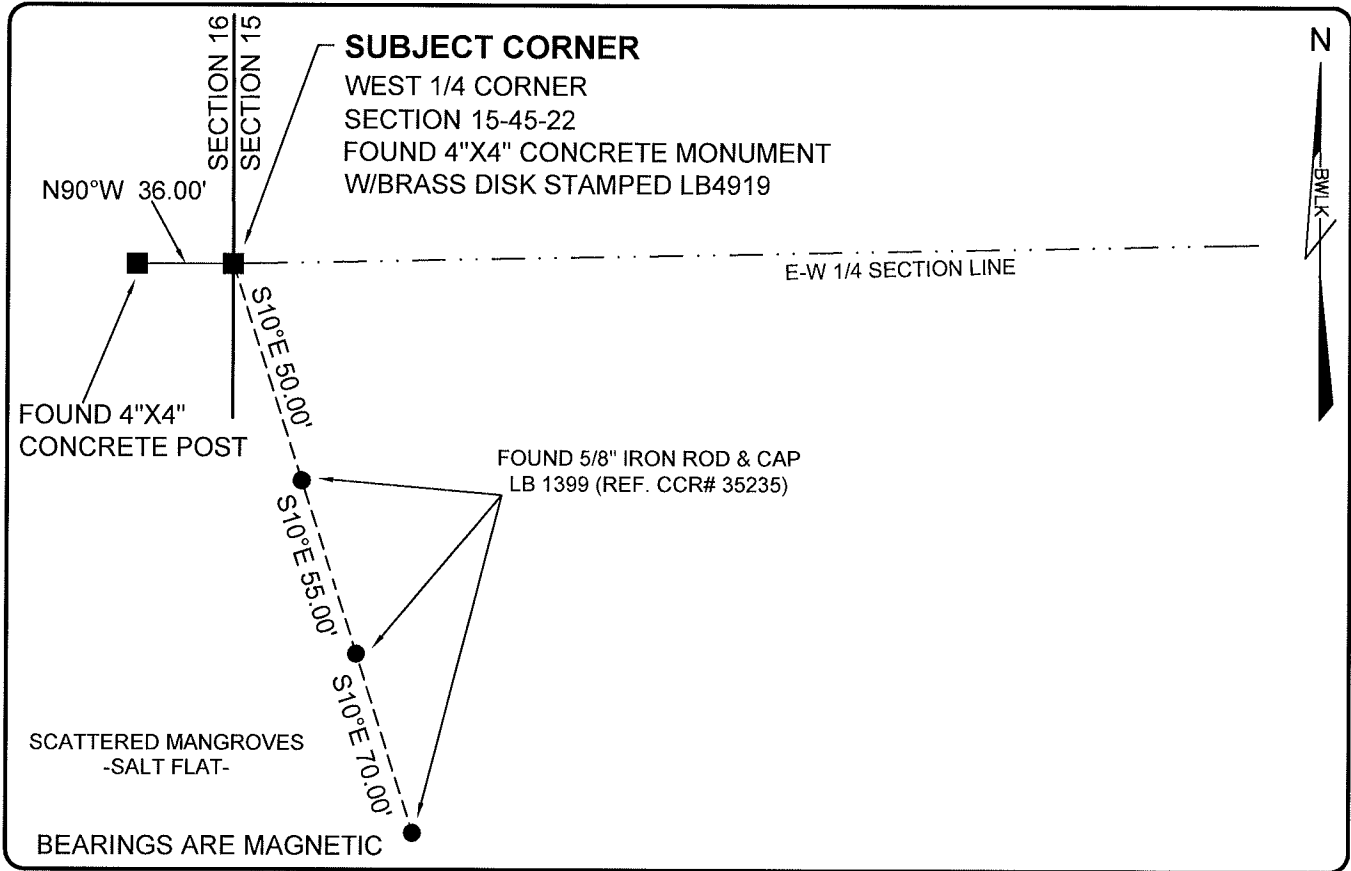


LAND CORNER RECORD

PUBLIC WORKS
LEE COUNTY, FLORIDA

Address - 1500 Monroe St., Ft. Myers, Fla. 33901

Phone : (239) 479-8900

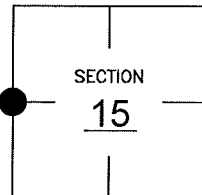


COMMENTS:

FOUND 4"X4" CONCRETE MONUMENT W/BRASS DISK STAMPED LB4919. RECOVERED ALL REFERENCES ACCORDING WITH CCR# 35235

CORNER DESCRIPTION

W1/4 Corner
Section 15
Township 45
Range 22



HORIZONTAL POSITION INFORMATION

Florida West Zone, NAD 1983(1990 Adjustment)

Northing(ft) 807511.36 Easting(ft) 620875.93

Latitude 26°33'18.79568" N Longitude 82°06'28.65143" W

Scale Factor 0.99994

EXISTING CERTIFIED CORNER RECORDS

Document No.	Date
<u>35235</u>	<u>04-17-90</u>
_____	_____
_____	_____
_____	_____
_____	_____

The above documents are based on FDEP Bureau of Surveying and Mapping Record Information.

I hereby certify the monument and accessories shown above were field located on 02-23-05.

Scott C. Whitaker
SCOTT C. WHITAKER
Professional Surveyor and Mapper
Florida Certificate No. 4324
Date Signed 08-30-05

BEAN, WHITAKER, LUTZ & KAREH, INC. (LB 4919)
13041 McGregor Boulevard
Fort Myers, Florida 33919-5910
Phone: (239) 481-1331

POINT NO. 11638

BLM REFERENCE NO. T45SR22E400440