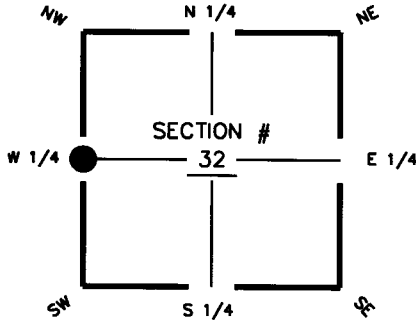


FLORIDA DEPARTMENT OF ENVIRONMENTAL PROTECTION CERTIFIED CORNER RECORD

DOC. # 094490

CORNER DESCRIPTION:

Depict corner with



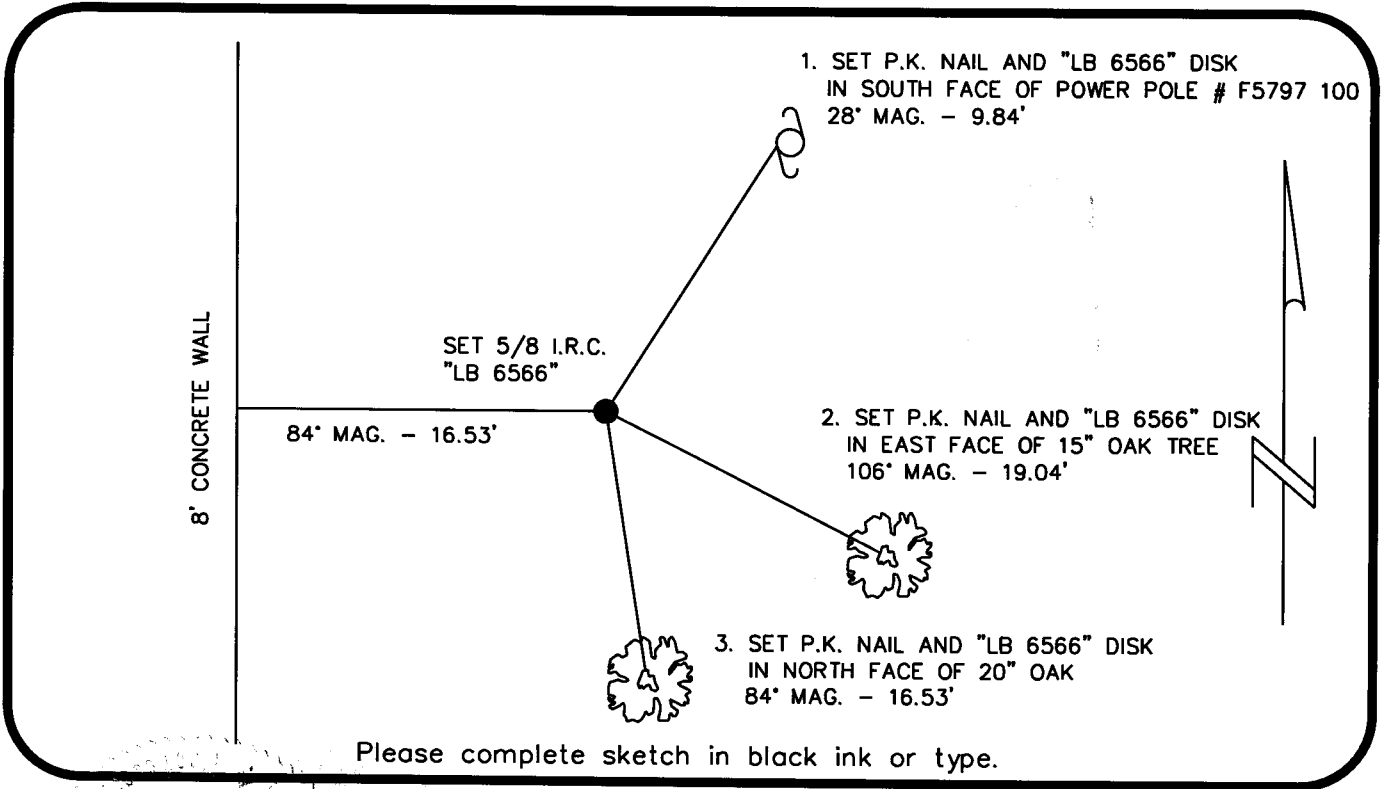
W 1/4 corner of Section 32
Twp 44 S, Rge 27 E
Tallahassee Base Meridian,
LEE County(s), Florida

MONUMENTATION DESCRIPTION (EVIDENCE FOUND OR METHOD TO SET)

SET 5/8" IRON ROD WITH CAP "LB6566". POSITION DETERMINED BY SINGLE PROPORTION MEASUREMENT.

HORIZONTAL POSITION INFORMATION (if determined):

Latitude 26° 36' 23.5213" N. Longitude 81° 38' 45.6790" W.
Y(NORTHING-Ft.) 826307.894 X(EASTING-Ft.) 771827.751 Zone WEST
Convergence 0° 09' 30.7247" Scale factor 0.999956514
Coordinate determination (circle one): Field traverse GPS
Horizontal datum (circle one): NAD27 NAD83(1986) NAD83(1999) other (explain)
Accuracy (circle one): 1st 2nd 3rd other 1:50,000



Please complete sketch in black ink or type.

SURVEYORS CERTIFICATE:

I certify the monument and accessories indicated above were field located on 04/29/08

[Signature]
SIGNATURE 6541
McKIM & CREED, PA PSM NO. 6566
FIRM OR AGENCY LB NO.
10970 S. CLEVELAND AVENUE, SUITE 401
ADDRESS
FORT MYERS FLORIDA 33907
CITY STATE ZIP
(239) 275-8875 5-22-2008
PHONE NUMBER DATE

SEND ORIGINAL TO:
Department of Environmental Protection
Bureau of Surveying and Mapping
3900 Commonwealth Boulevard
Mail Station 105
Tallahassee, Florida 32399

D.E.P. USE ONLY

Processed: 6-1-08 MB
B.L.M. - I.D. 200140
QUAD - I.D. 2114 ALVA SW

EMBOSSSED SEAL OVER SIGNATURE