

FLORIDA DEPARTMENT OF ENVIRONMENTAL PROTECTION

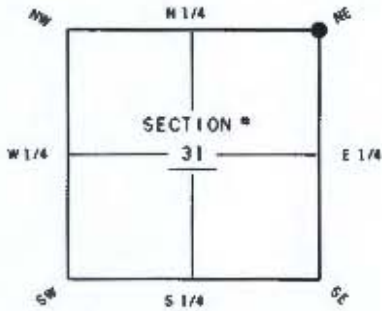
CERTIFIED CORNER RECORD

102113

DDC. #

CORNER DESCRIPTION:

Depict corner with



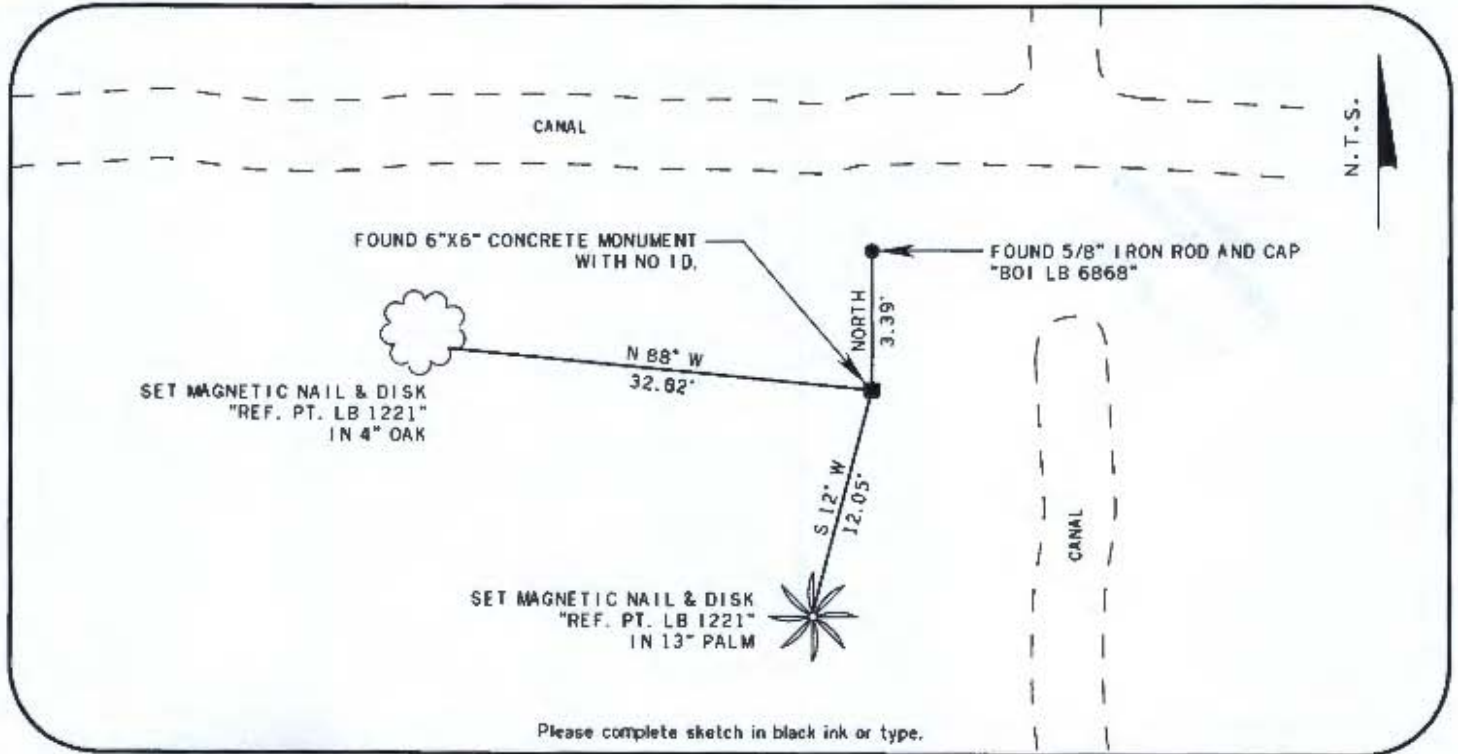
NE corner of Section 31  
TWP 44 S RGE 26 E  
Tallahassee Base Meridian,  
LEE County(s), Florida

MONUMENTATION DESCRIPTION (EVIDENCE FOUND OR METHOD TO SET)

FOUND 6"X6" CONCRETE MONUMENT WITH NO ID.

HORIZONTAL POSITION INFORMATION ( if determined ):

Latitude 26° 36' 47.91720" N Longitude 81° 44' 34.37095" W  
Y(NORTHING-F+.) 828695.539 X(EASTING-F+.) 740174.348 Zone FL-WEST  
Convergence 0° 06' 54.7" Scale factor 0.999949268  
Coordinate determination (circle one): Field traverse GPS  
Horizontal datum (circle one): NAD27 NAD83(1986) NAD83(1999) other (explain)  
Accuracy (circle one): 1st 2nd 3rd other



SURVEYORS CERTIFICATE:

I certify, the monument and accessories indicated above were field located on

MARCH 15, 2011

*William P. Hinkle* 4633  
SIGNATURE PSM NO.  
BOWYER-SINGLETON & ASSOC., INC. 1221  
FIRM OR AGENCY LB NO.  
320 SOUTH MAGNOLIA AVE.  
ORLANDO FLORIDA 32801  
407-843-5100 NOVEMBER 11, 2011  
PHONE NUMBER DATE

SEND ORIGINAL TO:

Department of Environmental Protection  
Bureau of Surveying and Mapping  
3900 Commonwealth Boulevard  
Mail Station 105  
Tallahassee, Florida 32399

D.E.P. USE ONLY  
Processed: 11-18-11 WLE  
B.L.M. - I.D. 200200  
QUAD - I.D. 211A ALVA SW

EMBOSSSED SEAL OVER SIGNATURE