

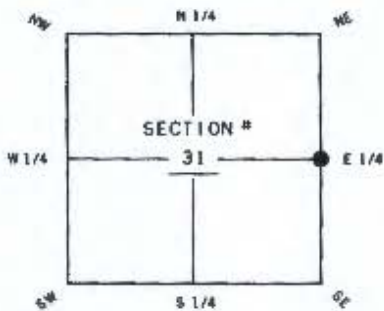
**FLORIDA DEPARTMENT OF ENVIRONMENTAL PROTECTION**  
**CERTIFIED CORNER RECORD**

102114

DOC. # \_\_\_\_\_

**CORNER DESCRIPTION:**

Depict corner with \_\_\_\_\_ ●



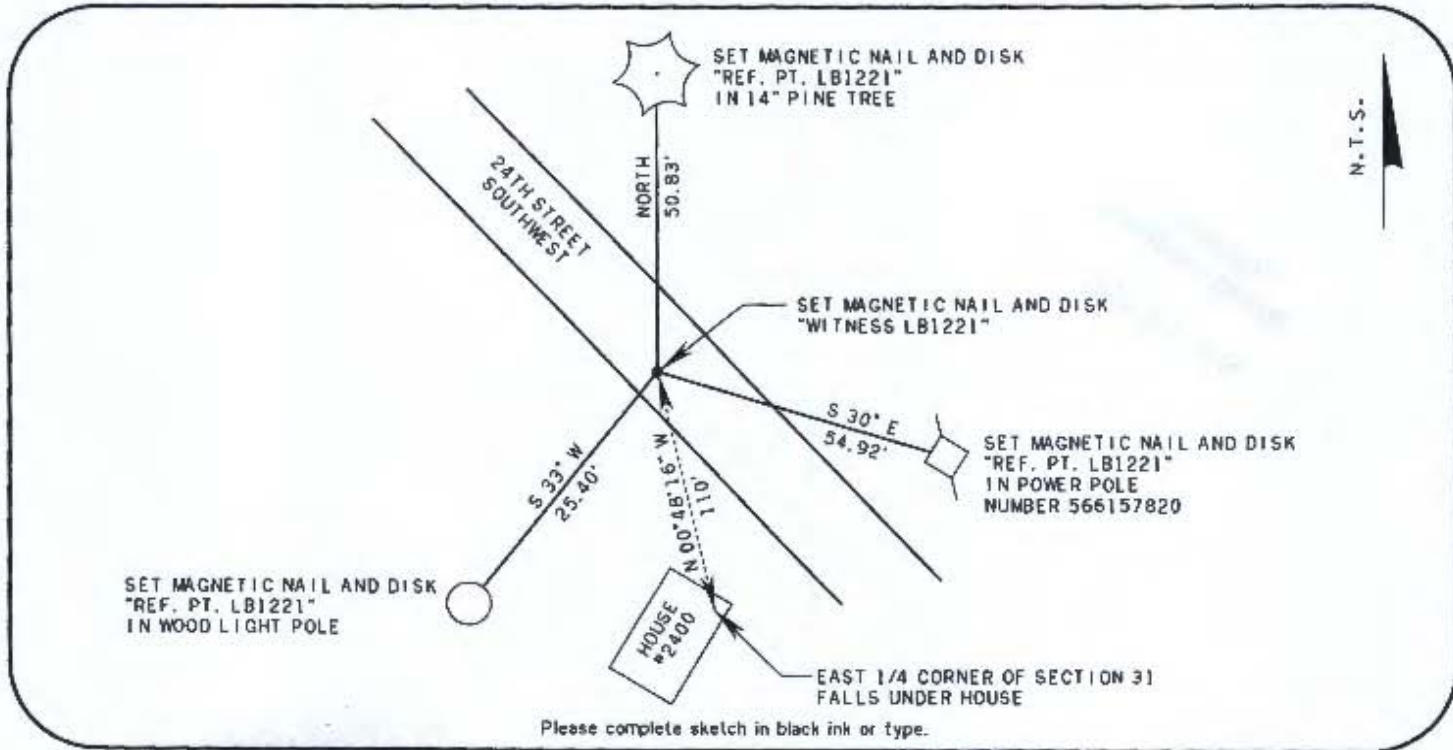
E 1/4 corner of Section 31  
 TWP 44 S RGE 26 E  
 Tallahassee Base Meridian,  
 LEE County(s), Florida

**MONUMENTATION DESCRIPTION (EVIDENCE FOUND OR METHOD TO SET)**

THE EAST 1/4 CORNER OF SECTION 31 FALLS UNDER A HOUSE.  
 (2400 LOLA AVENUE SOUTH). SET WITNESS CORNER ALONG THE  
 SECTION LINE AT A BEARING OF N 00°48'16" W, A DISTANCE  
 OF 110' FROM THE TRUE CORNER.  
 SET MAGNETIC NAIL AND DISK "WITNESS LB1221"

**HORIZONTAL POSITION INFORMATION ( if determined ):**

Latitude 26° 36' 21.66968" N Longitude 81° 44' 34.01963" W  
 Y(NORTHING-Ft.) 826045.415 X(EASTING-Ft.) 740211.562 Zone FL-WEST  
 Convergence 0° 06' 54.7" Scale factor 0.999949275  
 Coordinate determination (circle one): Field traverse GPS  
 Horizontal datum (circle one): NAD27 NAD83(1986) NAD83(1999) other (explain) \_\_\_\_\_  
 Accuracy (circle one): 1st 2nd 3rd other \_\_\_\_\_



Please complete sketch in black ink or type.

**SURVEYORS CERTIFICATE:**

I certify the monument and accessories indicated above were field located on

OCTOBER 4, 2011

*(Signature)* License Number 4633 PS/M NO. 4633  
 SIGNATURE \_\_\_\_\_ PS/M NO. \_\_\_\_\_  
 BOWYER SINGLETON & ASSOC. INC. 1221  
 FIRM OR AGENCY \_\_\_\_\_ LB NO. \_\_\_\_\_  
 2726 SOUTH MAGNOLIA AVE.  
 ORLANDO FLORIDA Address  
 FLORIDA STATE ZIP  
 407-845-8120 NOVEMBER 11, 2011  
 PHONE NUMBER DATE

SEND ORIGINAL TO:  
 Department of Environmental Protection  
 Bureau of Surveying and Mapping  
 3900 Commonwealth Boulevard  
 Mail Station 105  
 Tallahassee, Florida 32399

Processed: 11-18-11 WILE  
 B.L.M. - I.D. 200140  
 QUAD - I.D. 2114 ALWA SW

EMBOSSSED SEAL OVER SIGNATURE