

FLORIDA DEPARTMENT OF ENVIRONMENTAL PROTECTION CERTIFIED CORNER RECORD

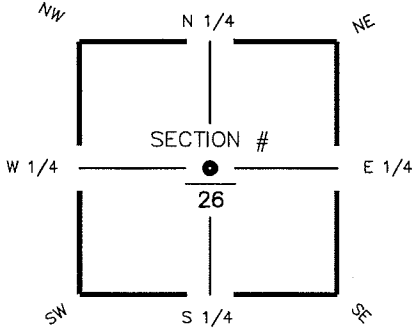
DOC. # _____

T-19

CORNER DESCRIPTION: MONUMENTATION DESCRIPTION (EVIDENCE FOUND OR METHOD TO SET)

Depict corner with

FOUND 3"x 3"
CONCRETE MONUMENT
NO ID
1.0' ABOVE GROUND



CENTER corner of Section 26
Twp 44 S, Rge 25 E
Tallahassee Base Meridian,
LEE County(s), Florida

HORIZONTAL POSITION INFORMATION (if determined):

Latitude 26° 37' 12.8198" N Longitude 81° 46' 59.5913" W
Y(NORTHING-Ft.) 831185.51 X(EASTING-Ft.) 726990.22 Zone FL W
Convergence 00° 05' 49.7" Scale factor 0.99994693
Coordinate determination (circle one): Field traverse GPS
Horizontal datum (circle one): NAD27 NAD83(1986) NAD83(1990) other (explain)
Accuracy (circle one): 1st 2nd 3rd other _____

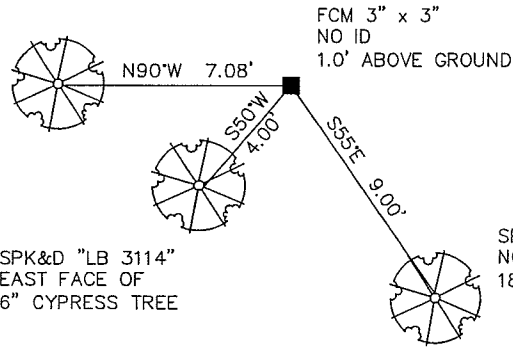
LEGEND

- FIR = FOUND IRON ROD
- PK = PARKER KAYLON NAIL
- SPK&D = SET P.K. NAIL & DISK
- FPK&D = FOUND PK NAIL & DISK
- FIP = FOUND IRON PIPE, SIZE
- FCM = FOUND CONCRETE MONUMENT



NOT TO SCALE

SPK&D "LB 3114"
EAST FACE OF
24" CYPRESS TREE



SPK&D "LB 3114"
EAST FACE OF
6" CYPRESS TREE

SPK&D "LB 3114"
NORTH FACE OF
18" CYPRESS TREE

FCM 3" x 3"
NO ID
1.0' ABOVE GROUND

Please complete sketch in black ink or type.

SURVEYORS CERTIFICATE:

I certify the monument and accessories indicated above were field located on AUGUST 21, 2006

SEND ORIGINAL TO:
Department of Environmental Protection
Bureau of Surveying and Mapping
3900 Commonwealth Boulevard
Mail Station 105
Tallahassee, Florida 32399

[Signature] PSM NO. 5688
AIM ENGINEERING & SURVEYING, INC. LB 3114
FIRM OR AGENCY LB NO.
5300 LEE BOULEVARD ADDRESS
LEHIGH ACRES, FLORIDA 33971-1026
CITY STATE ZIP
(239) 332-4569 9/11/06
PHONE NUMBER DATE

EMBOSSSED SEAL OVER SIGNATURE

D.E.P. USE ONLY	
Processed: _____	
B.L.M. - I.D. <u>540 240</u>	
QUAD - I.D. _____	