

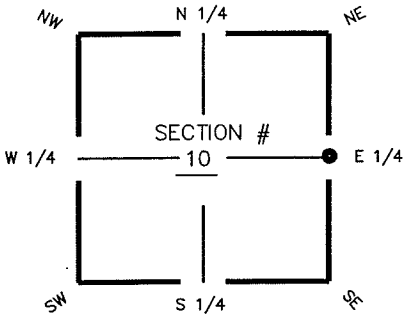
# FLORIDA DEPARTMENT OF ENVIRONMENTAL PROTECTION CERTIFIED CORNER RECORD

DOC. # \_\_\_\_\_

G-17

CORNER DESCRIPTION: MONUMENTATION DESCRIPTION (EVIDENCE FOUND OR METHOD TO SET)

Depict corner with

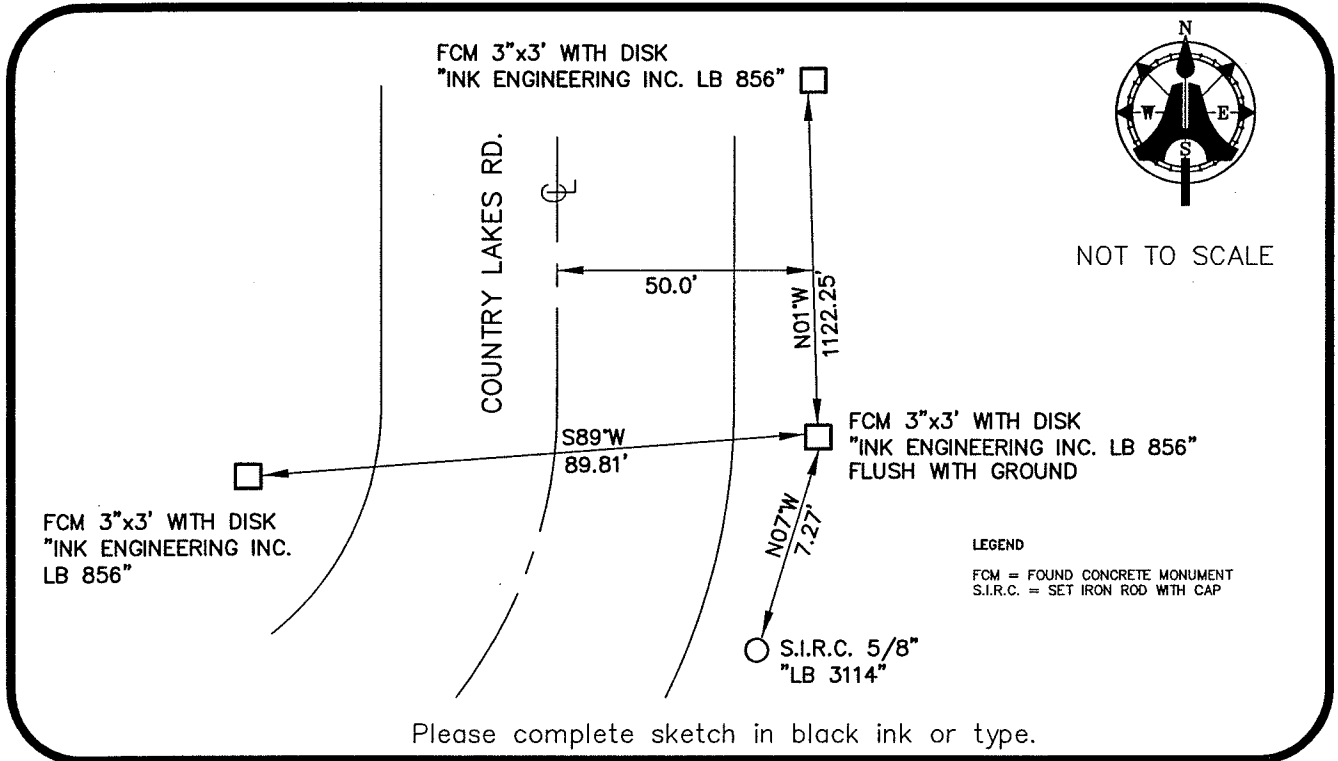


E 1/4 corner of Section 10  
Twp 44S, Rge 25 E  
Tallahassee Base Meridian,  
LEE County(s), Florida

FOUND CONCRETE MONUMENT, 3"x3" WITH DISK  
"INK ENGINEERING, INC. LB 856"  
FLUSH WITH GROUND

HORIZONTAL POSITION INFORMATION ( if determined ):

Latitude 26° 39' 49.2304" N Longitude 81° 47' 31.2486" W  
Y(NORTHING-Ft.) 846973.46 X(EASTING-Ft.) 724092.81 Zone FL W  
Convergence 00° 05' 36.0115" Scale factor 0.99994647  
Coordinate determination (circle one): Field traverse  GPS  
Horizontal datum (circle one): NAD27 NAD83(1986)  NAD83(1990) other (explain)  
Accuracy (circle one): 1st  2nd 3rd other \_\_\_\_\_



SURVEYORS CERTIFICATE:

I certify the monument and accessories indicated above were field located on APRIL 27, 2005

[Signature] 5688  
SIGNATURE PSM NO.  
AIM ENGINEERING & SURVEYING, INC. LB 3114  
FIRM OR AGENCY LB NO.  
5300 LEE BOULEVARD  
ADDRESS  
LEHIGH ACRES, FLORIDA 33971-1026  
CITY STATE ZIP  
(239) 332-4569 12/01/05  
PHONE NUMBER DATE

SEND ORIGINAL TO:  
Department of Environmental Protection  
Bureau of Surveying and Mapping  
3900 Commonwealth Boulevard  
Mail Station 105  
Tallahassee, Florida 32399

D.E.P. USE ONLY

Processed: \_\_\_\_\_  
B.L.M. - I.D. \_\_\_\_\_  
QUAD - I.D. \_\_\_\_\_

EMBOSSSED SEAL OVER SIGNATURE